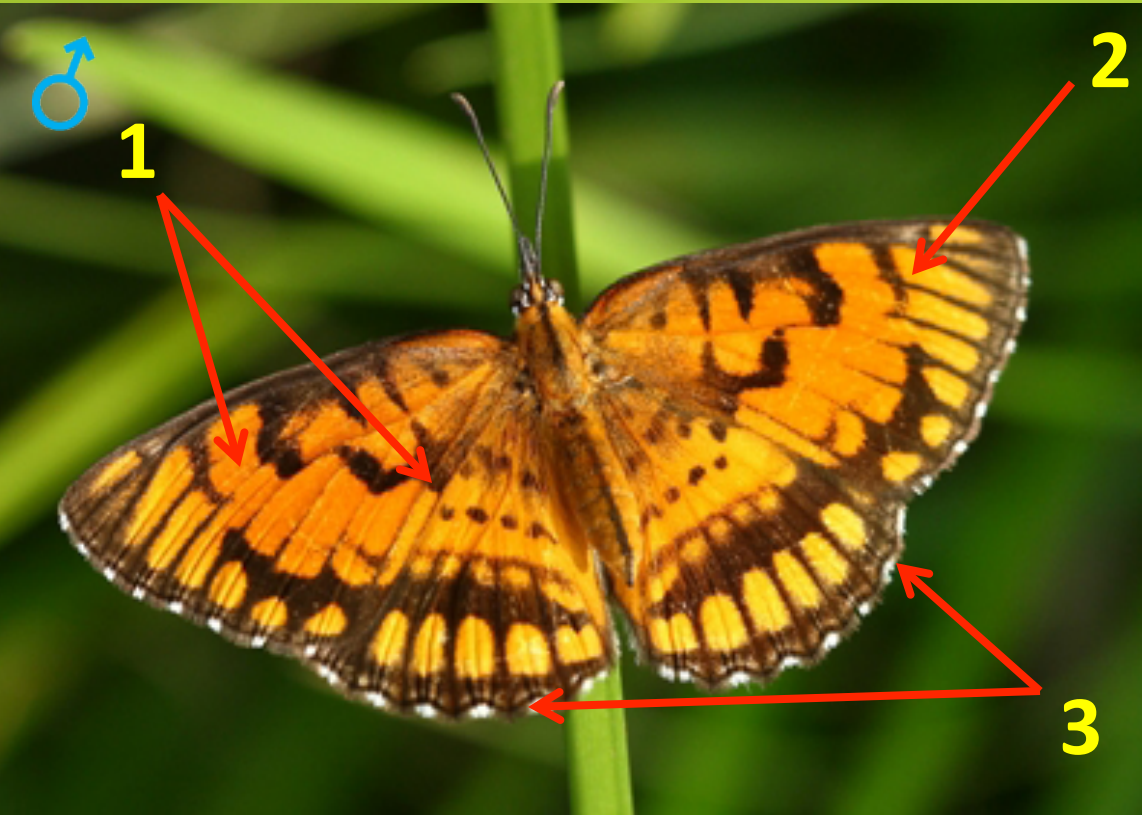


Butterflies Identification - Part III

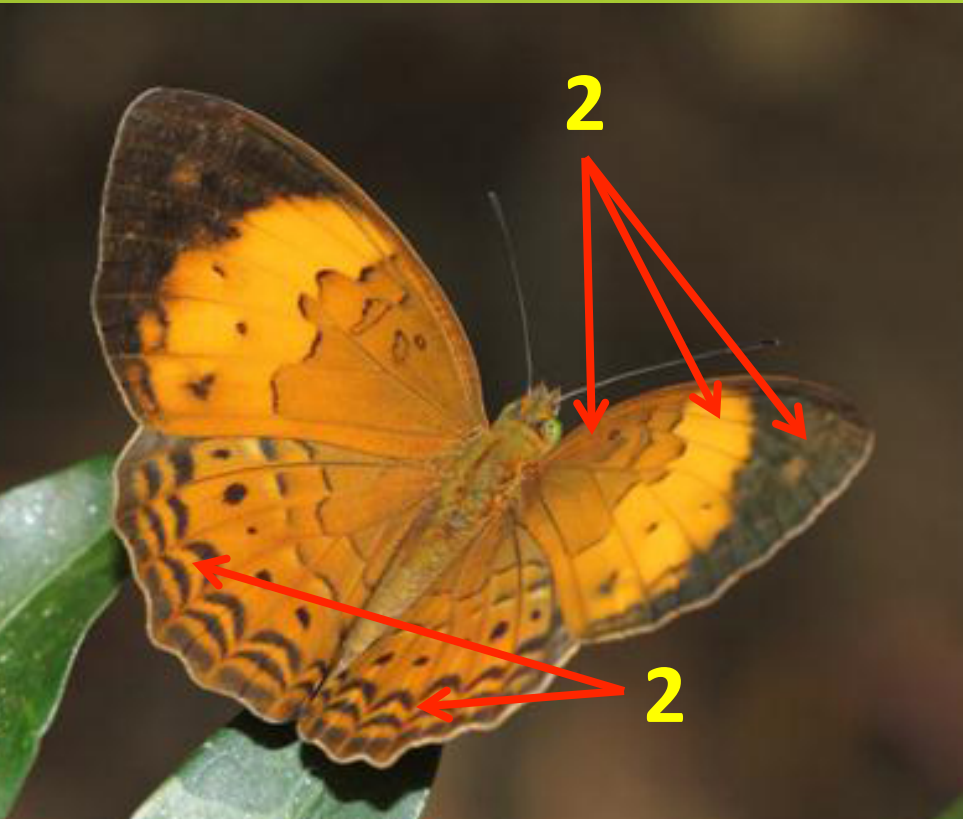
by Malinga Prabhasara.

15, Joker (*Byblia ilithyia*)



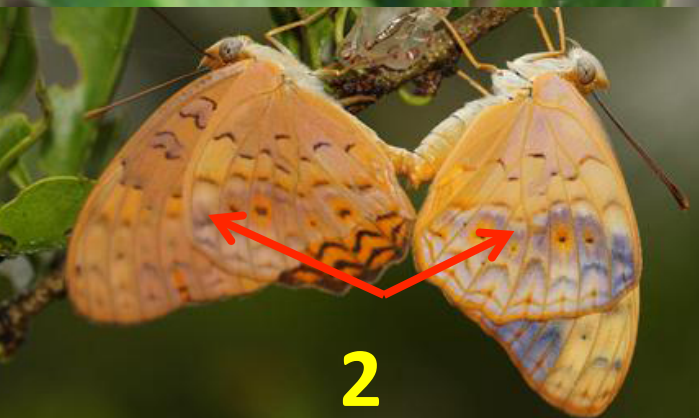
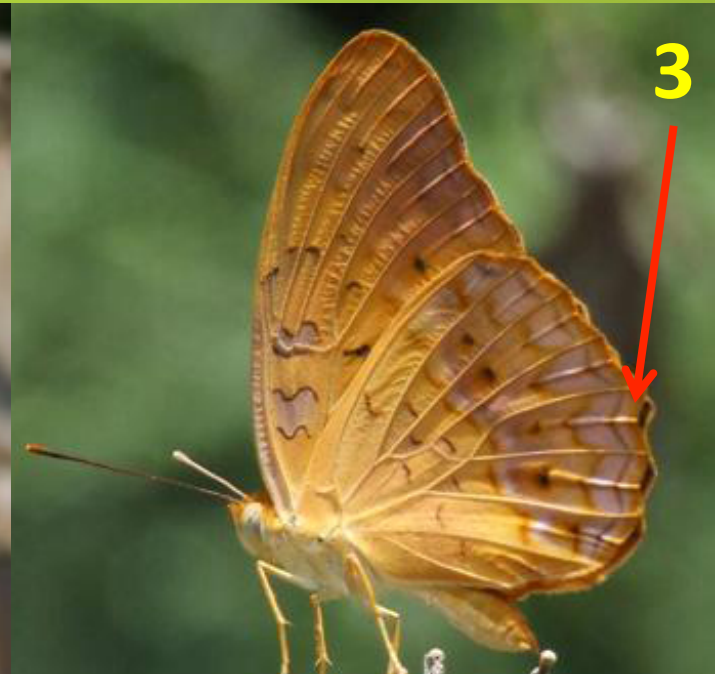
1. **male** has brighter orange and black
2. Pattern highly varies
3. Cilia alternately marked in black and white
4. Under side has creamy white markings

16, *Rustic (Cupha erymanthis)*



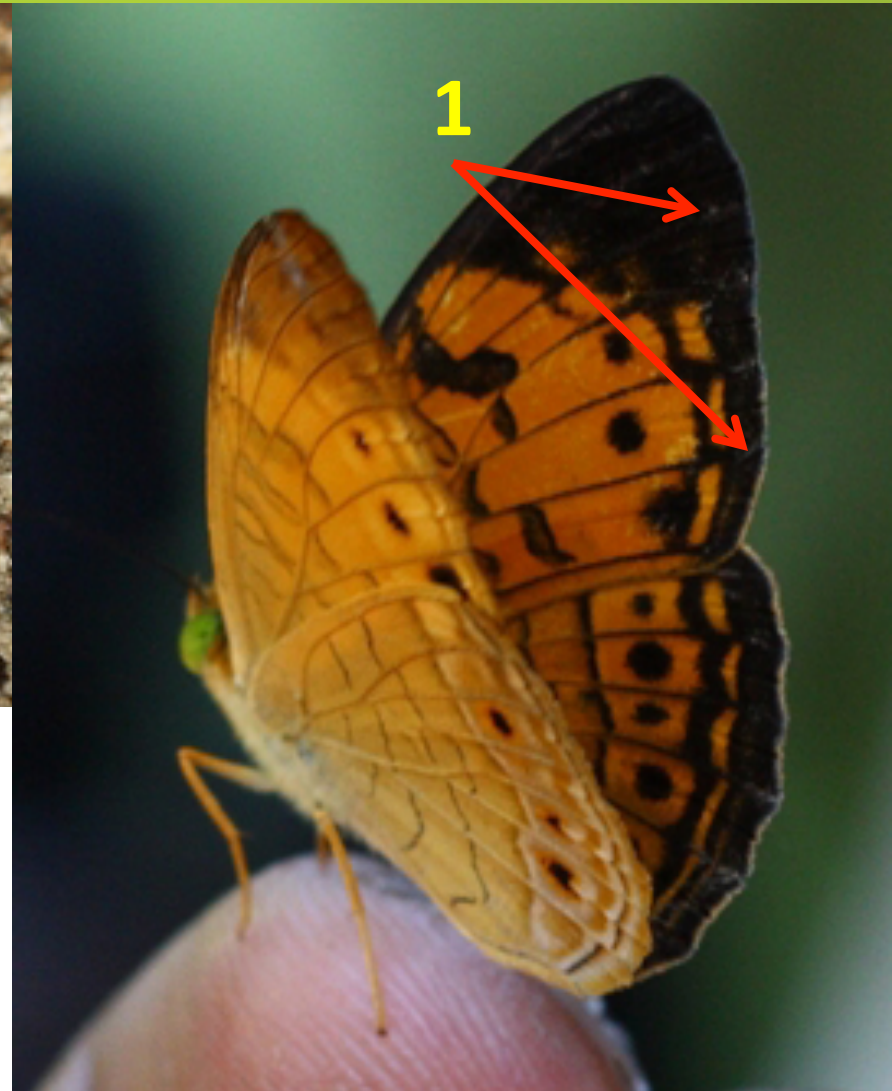
1. Black apex, Paler discal area and darker basal area on forewing
2. Marginal band, two sub marginal crescent shaped bands and row of discal spots on HW
3. color and pattern on under side vary very much
4. Eye greenish

17, Leopard (*Phalanta phalantha*)



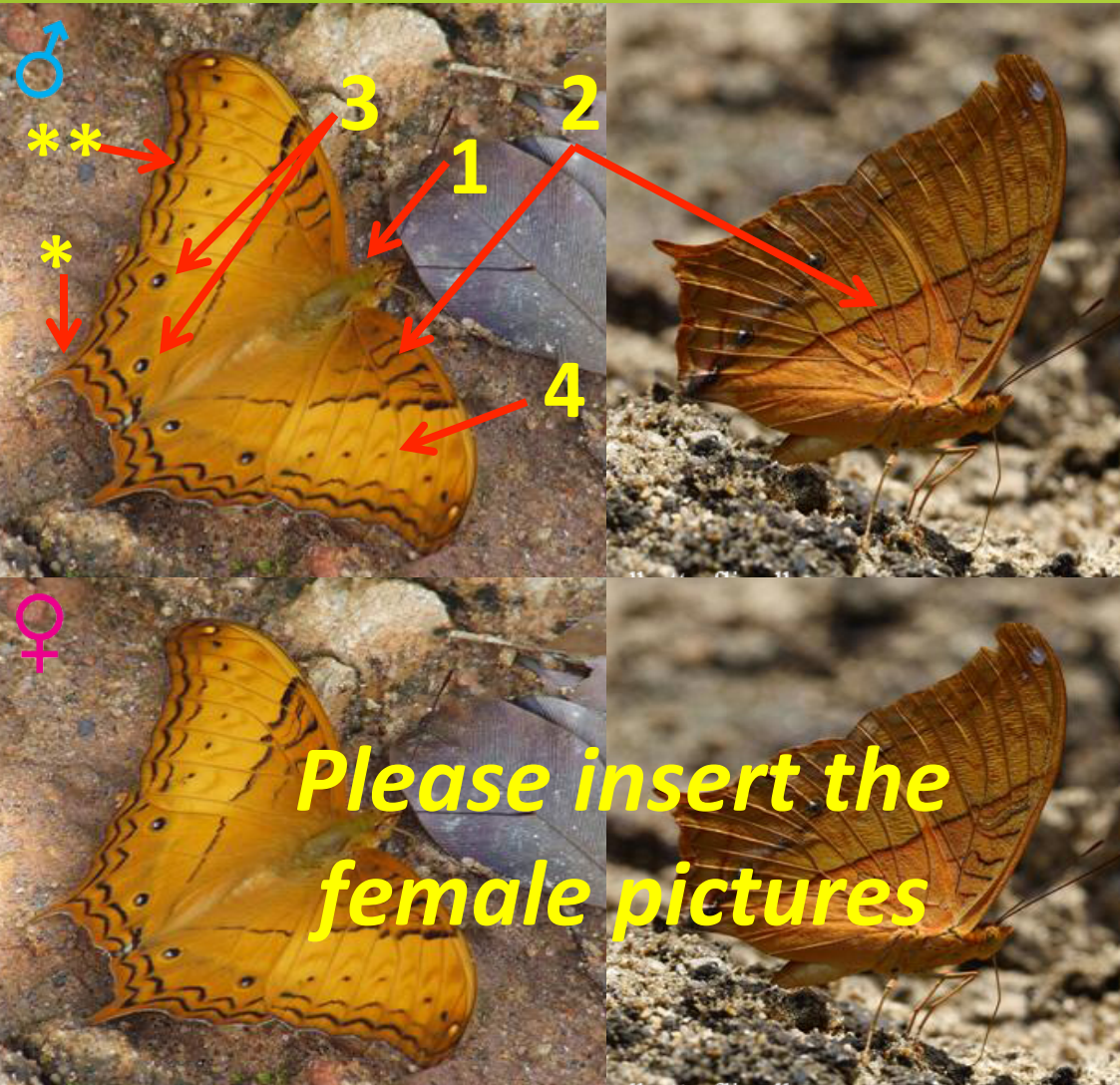
1. Black markings on orange background
 2. No black apex
 3. No blue /white markings on HW outer margin
 4. Purplish tinge on under side fades with age
- Smaller than Fritillary

18, Small Leopard (*Phalanta alcippe*)



1. Apex and outer margin is black on FW
 2. Marginal band, single band of crescent shaped markings and discal row of spots on HW
- Shining purple patches in female
 - Smaller than Rustic

19, Cruiser (*Vindula erota*)



* Tornal tail

** Inward curved outer margin on FW

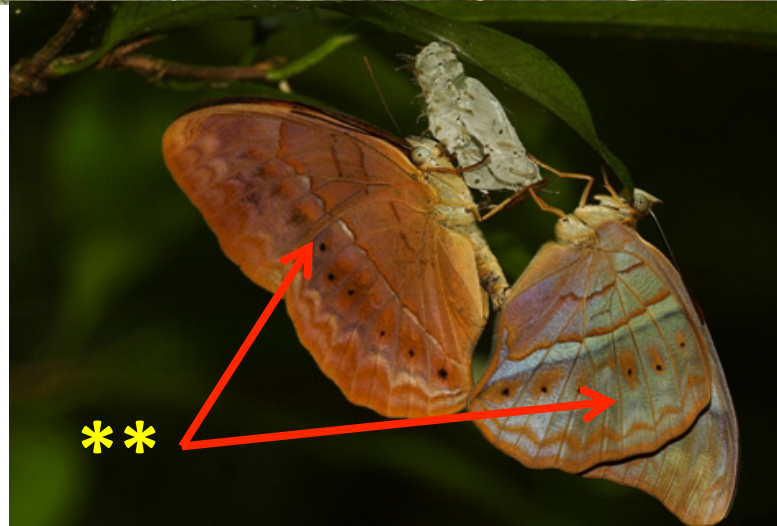
Male

1. Orange colored
2. Markings are black on upper side, merged with red-orange on under side
3. Two ocelli on HW
4. Discal row of spots on FW

Female

1. Grey-blue upper side with broad white discal band on FW
2. Two ocelli on HW
3. straw-colored underside

20, Tamil Yeoman (*Cirrochroa thais*)



- * White spot at HW upper margin
- ** Under side highly varies in color & pattern

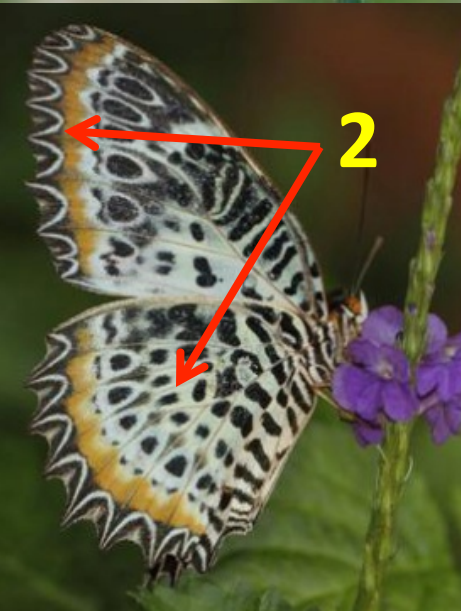
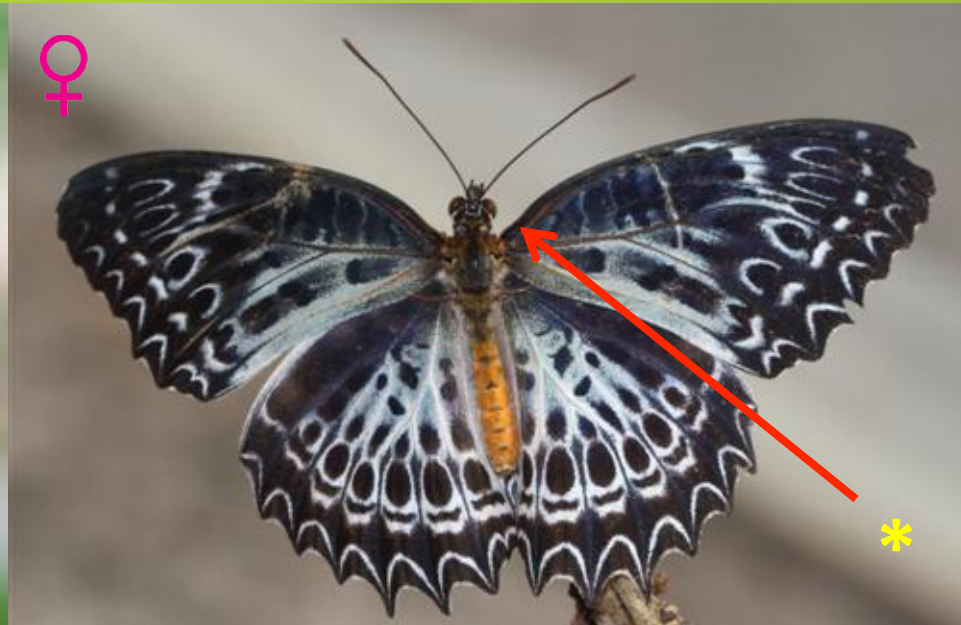
Male

1. Broad black FW apex, indistinct sub marginal bands on HW

Female

1. Lighter orange color than male
2. Black apex is interrupted in orange markings
3. Falcate FW apex

21, Ceylon Lace Wing (*Cethosia nietneri*)



1. Lace pattern on serrated outer margin
2. Under side has more white, orange colored sub margin

Male

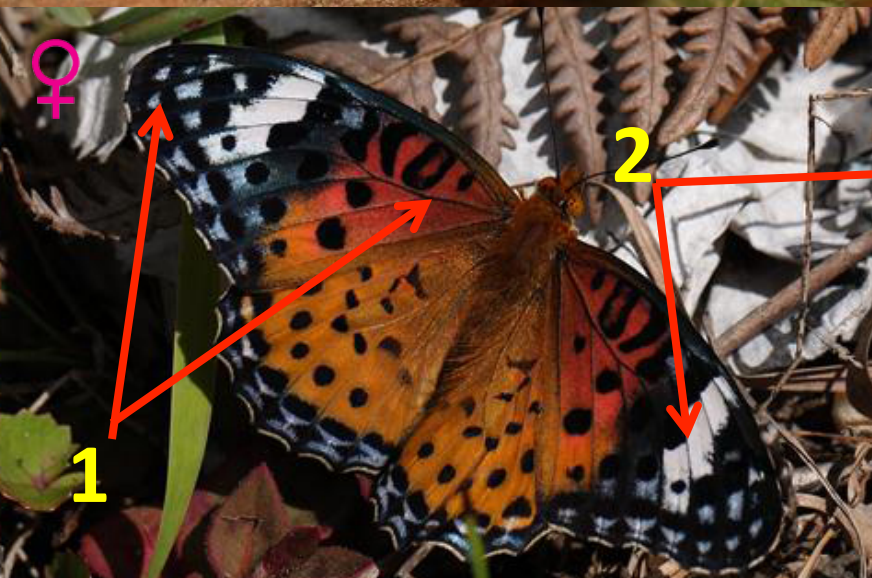
* orange color on FW base except in occational WSF individuals

22, Indian Fritillary (*Argynnis hyperbius*)



Male

- * Considerably larger than the Leopard
- 1. Two rows of blue streaks on HW outer margin

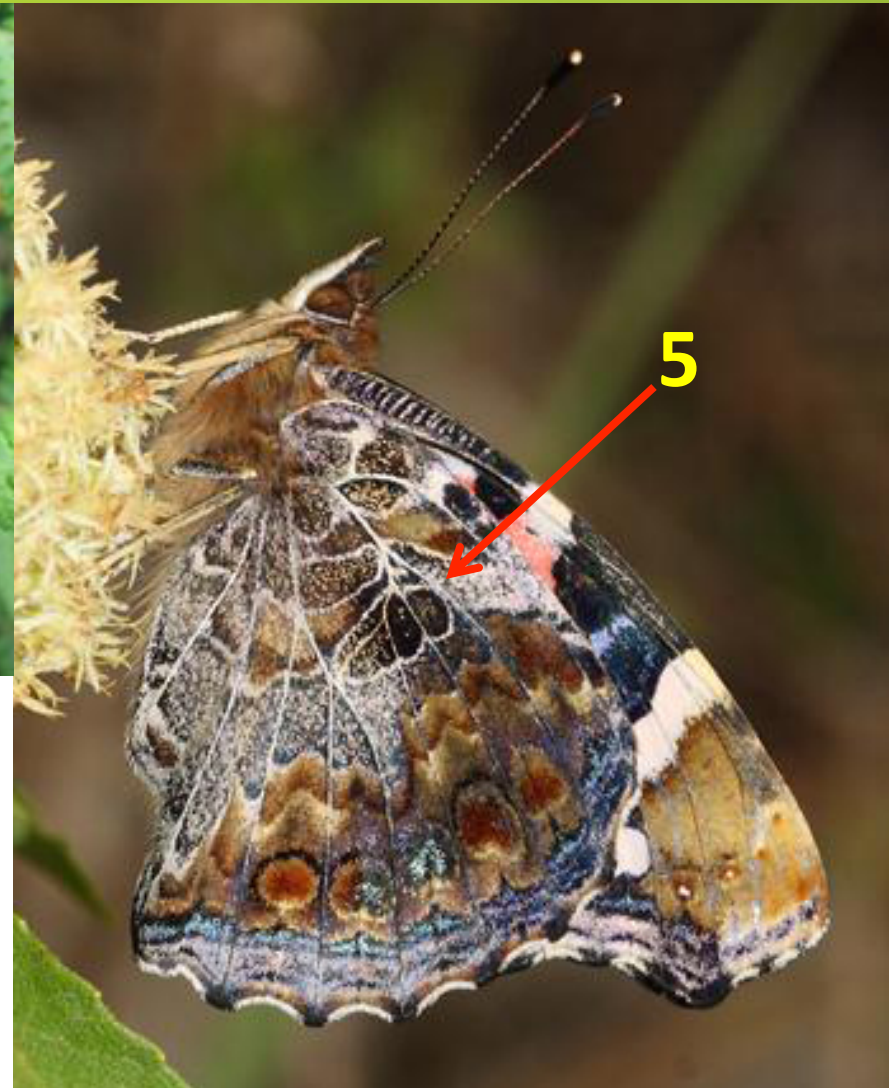


Female

- 1. Blackish apex & pinkish base on FW upper side
- 2. White sub apical band on both sides

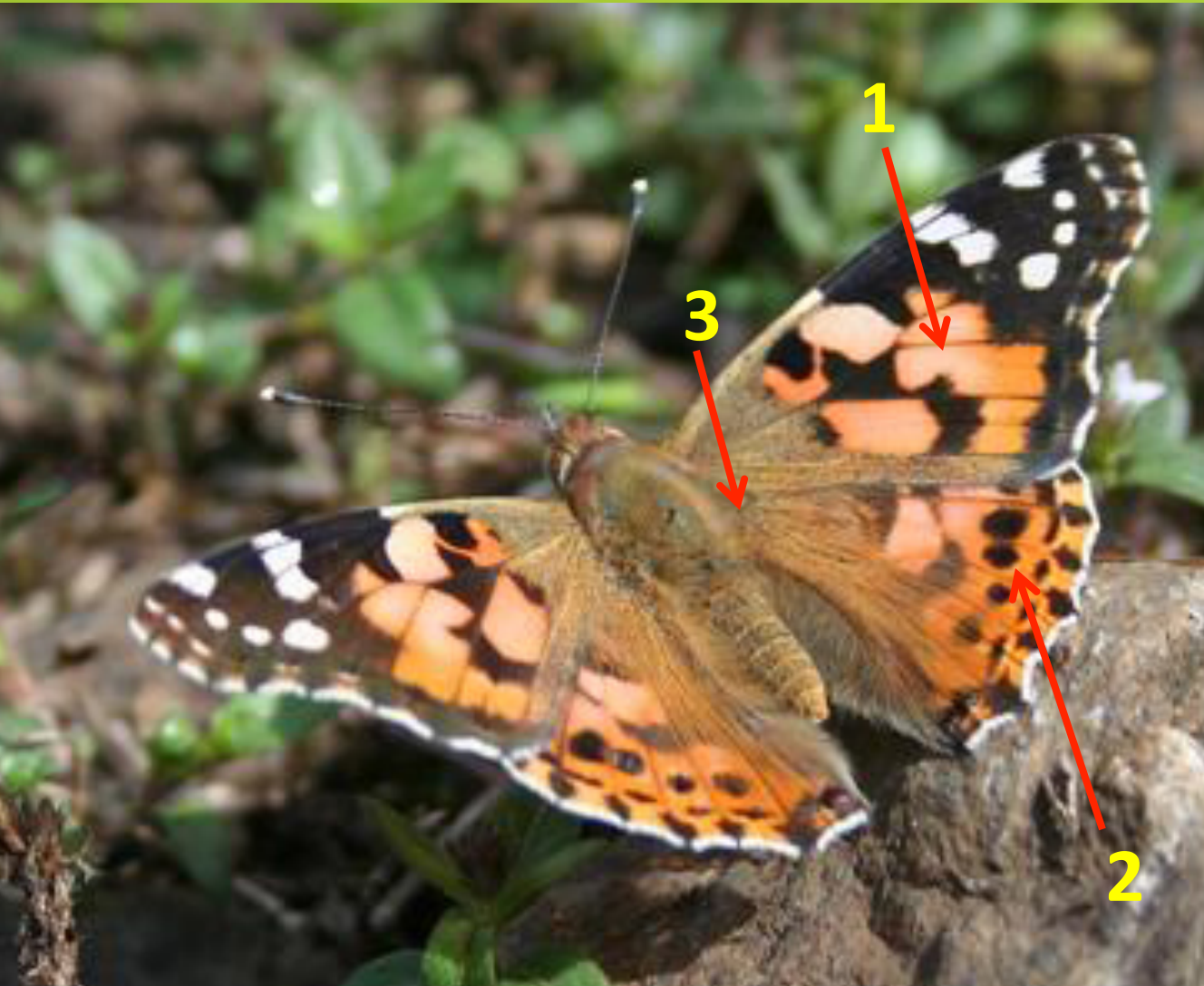
*under side is varying shades of green, brown & white

23, Indian Red Admiral (*Vanessa indica*)



1. Black FW apex with white markings
2. Median band on red patches on FW
3. Brown colored HW
4. Red sub marginal band with black triangle markings on HW
5. Under side is suited for camouflage

24, Painted Lady (*Vanessa cardui*)



1. More orange colored patches in lighter shade on FW than Red Admiral
2. Extensive orange area on HW
3. Long hairs on HW base
4. Sub marginal row of spots on HW under side are circular

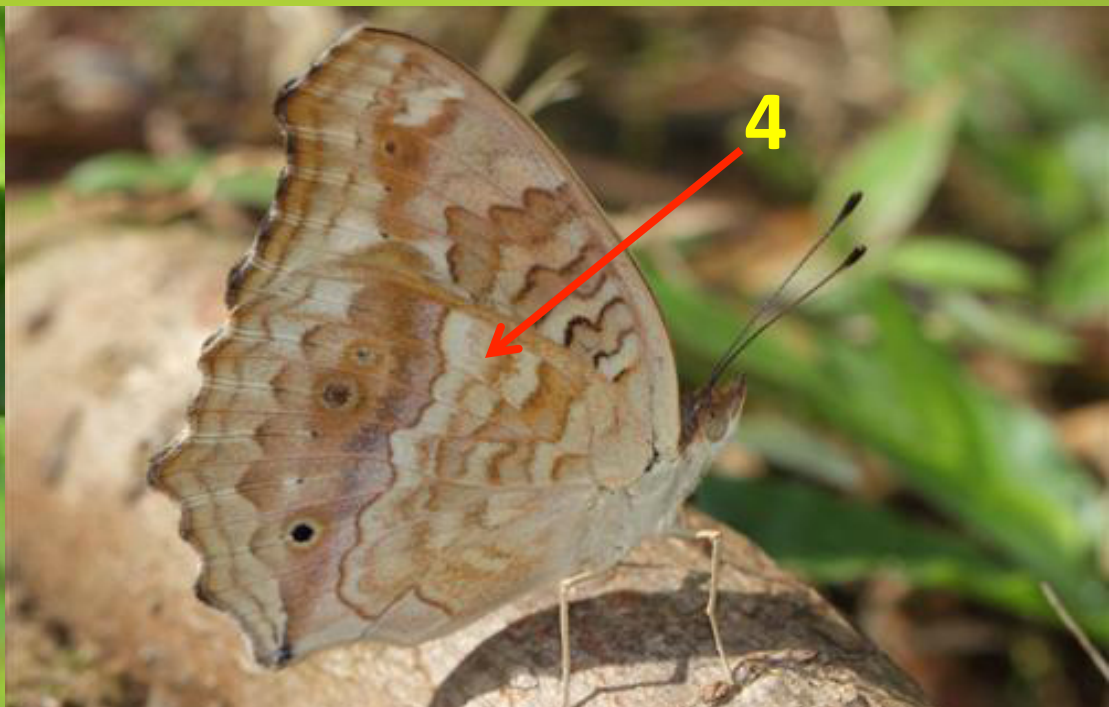
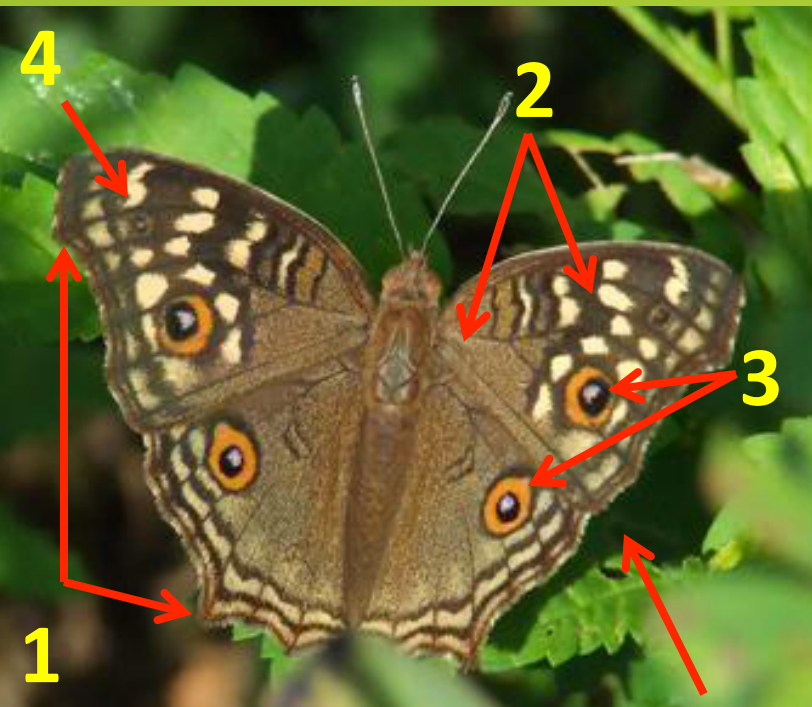
25, Blue Admiral (*Kaniska canace*)



2011 © slbutterflies.lk

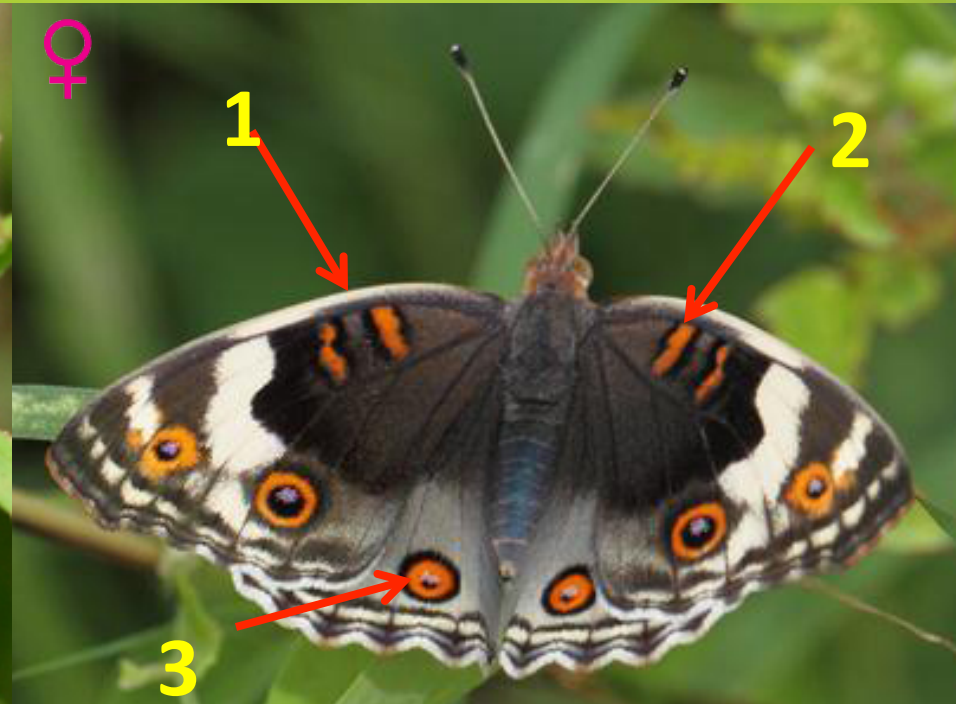
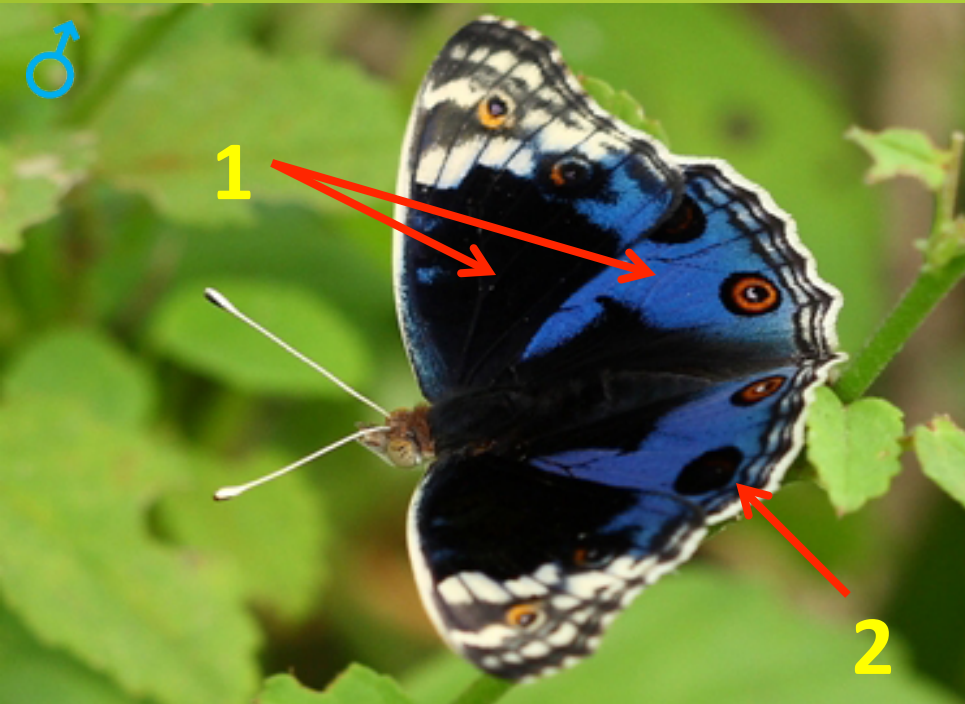
1. Irregular, jagged outer margin on both wings with falcate FW apex & elongated HW tornus
2. Iridescent blue discal band continue through both wings
3. Basal area is dusted with shiny blue-green scales
4. Under side with varying yellow and black markings & dustings

26, Lemon Pansy (*Junonia lemonias*)

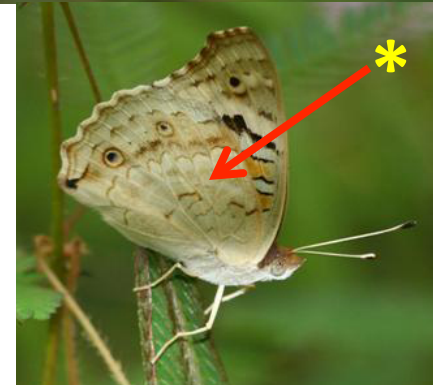


1. Serreted outer margins with falcate FW apex & pointed HW tornus
2. Brown upper side with yellow dustings and patches
3. Equal sized ocelli on each wing
4. Indistinct ocelli near FW apex
5. Prominence of markings on under side highly varies, purple scales occasionally appear

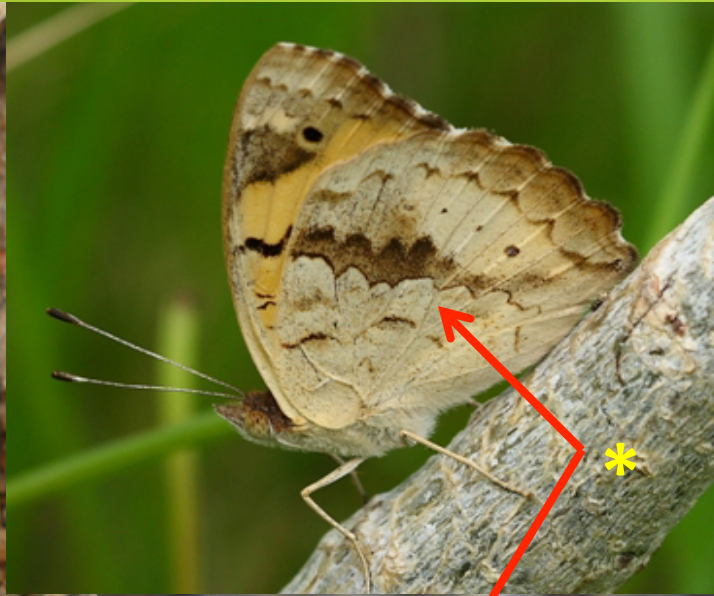
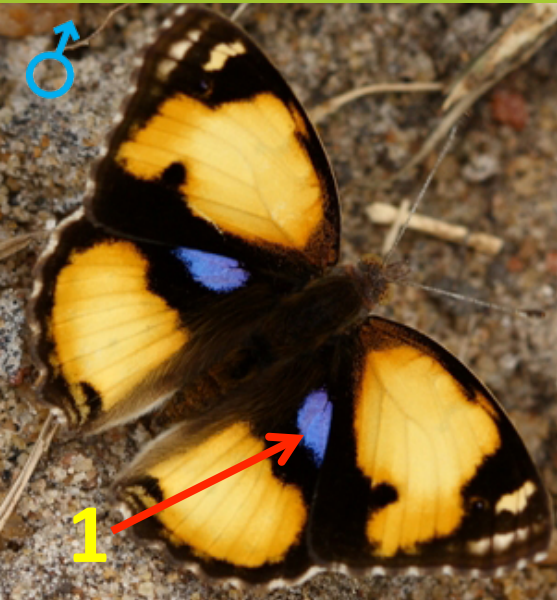
27, Blue Pansy (*Junonia orithya*)



- Male
1. Most of the HW brilliant blue, FW jet black
 2. Ocelli near the upper margin of HW is almost black
- Female
1. Usually duller than the male, but brighter individuals also occur
 2. FW cell has two red bands outlined in black
 3. Red color of the upper ocelli on HW is prominent
- * Under side varies, but lighter than any other *Junonia* sp.

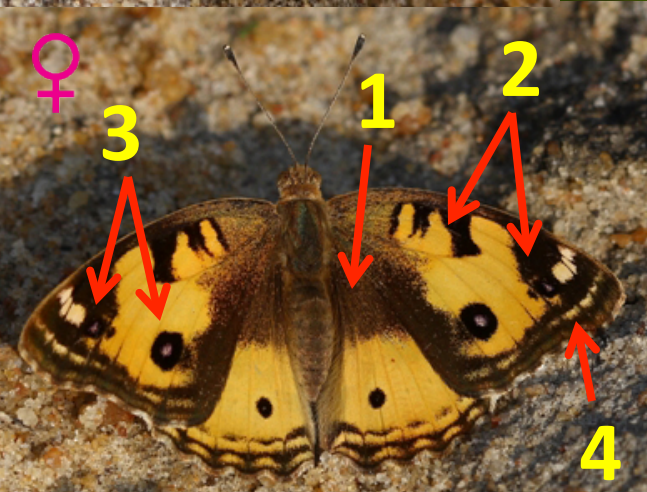


28, Yellow Pansy (*Junonia hierta*)



Male

1. blue patch some time covered over FW

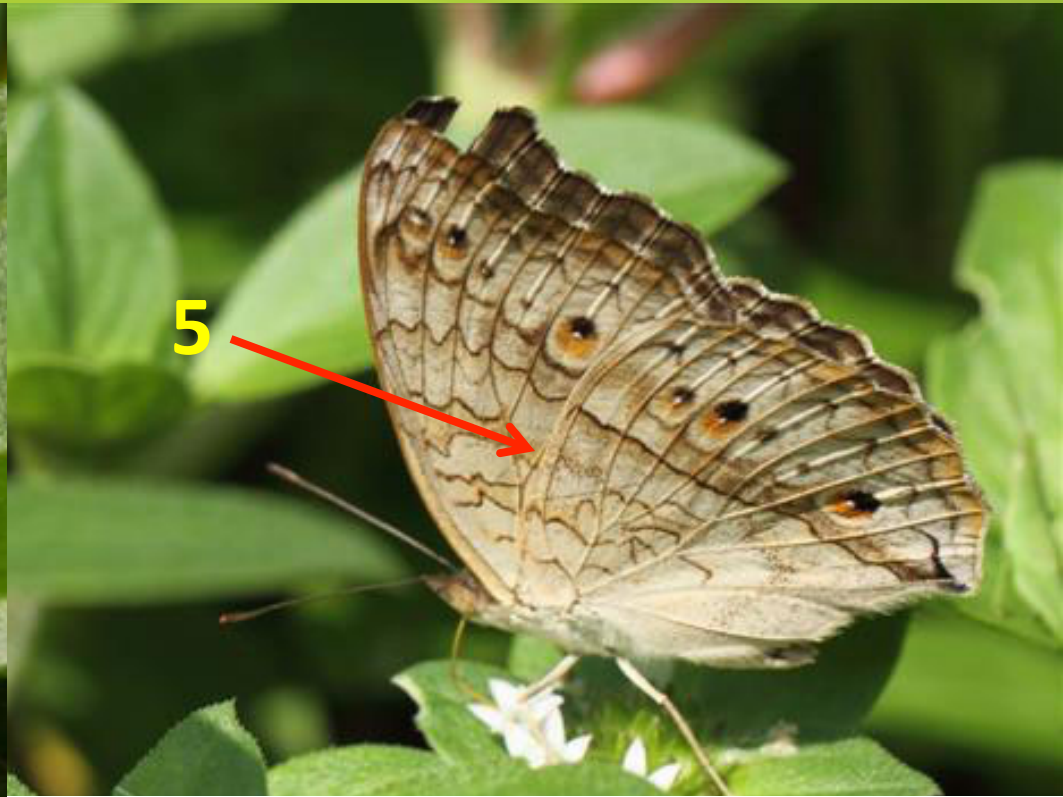
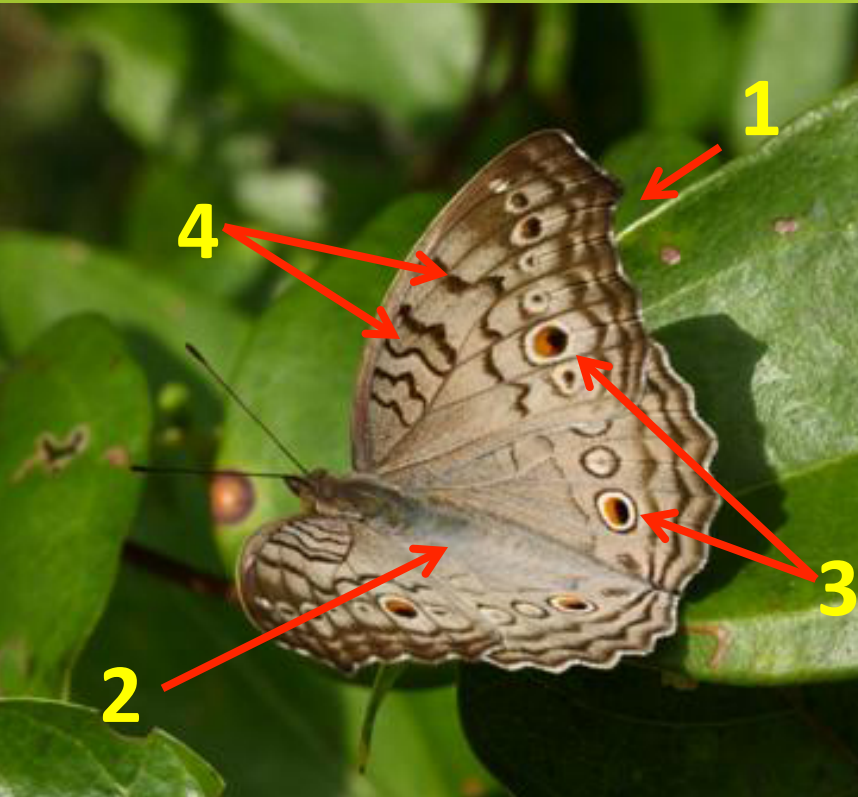


Female

1. No blue patch on HW, but may have a small purple patch
2. Black markings are not brighter as the male
3. Two ocelli on each wing, but only one is distinct
4. FW apex slightly falcate

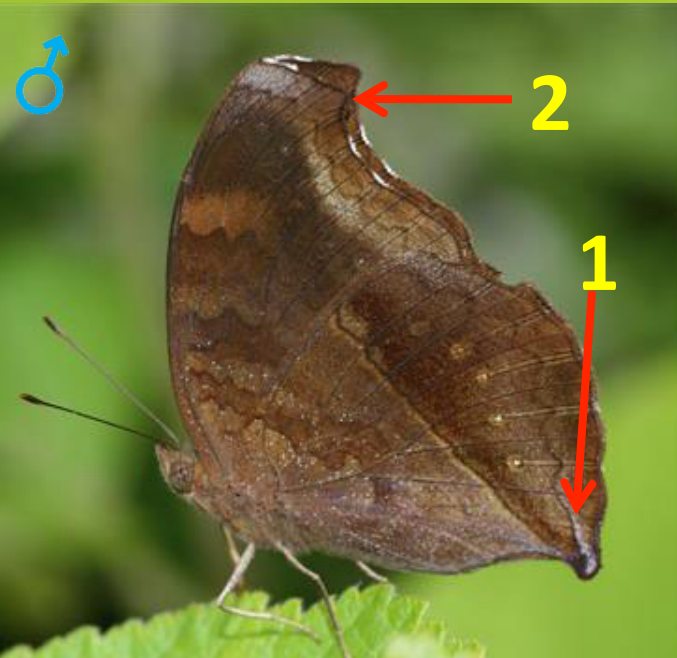
* Under side is yellowish with brown & white dustings

29, Grey Pansy (*Junonia atlites*)



1. Outer margin serrated with falcate FW apex in females
2. Gray wings
3. Discal row of ocelli on both wings with few distinct ones
4. Two pairs of irregular lines on FW cell and a median line
5. Prominence of markings on under side highly varies

30, Chocolate Soldier (*Junonia iphita*)

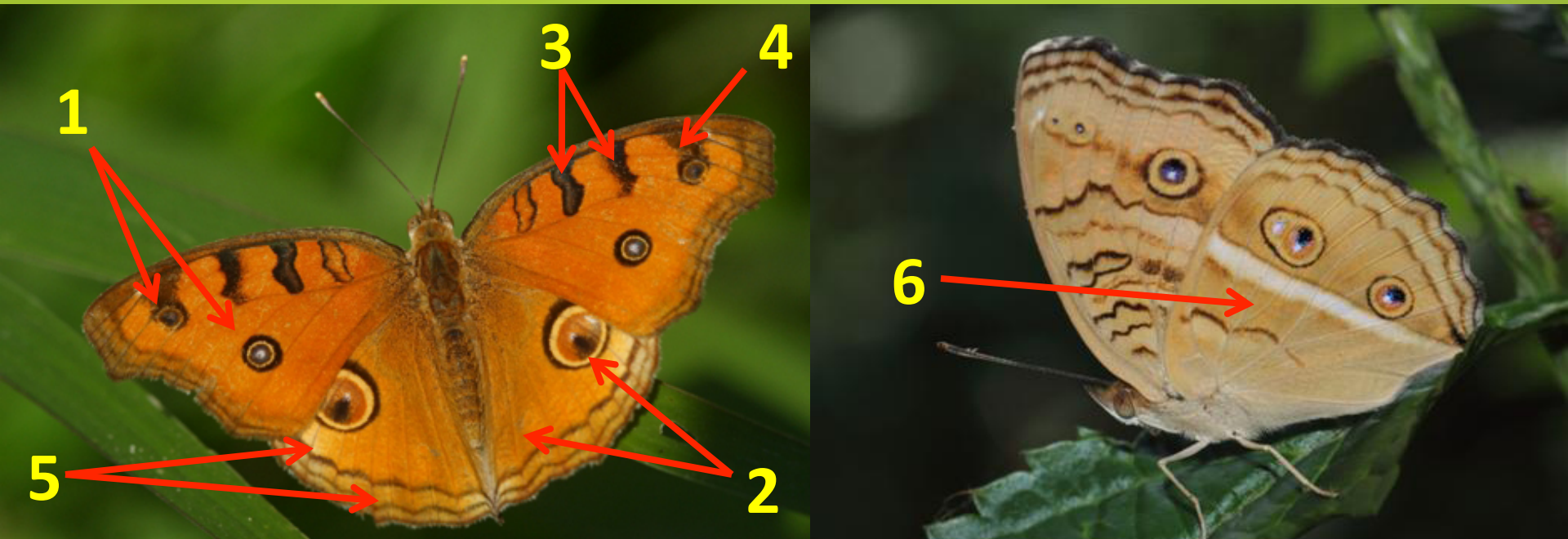


1. HW tornus elongated to resemble a leaf
2. FW apex is falcate in both sexes, more prominent in DSF
3. Number and prominence of ocelli on HW varies on both sides

Female

* Usually has one or two white spots at the upper margin of HW under side

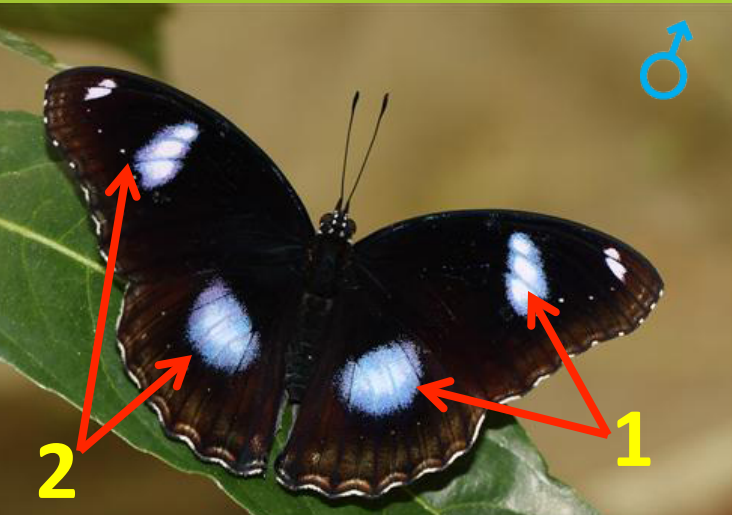
31, Peacock Pansy (*Junonia almana*)



1. Two Ocelli on FW
2. Two ocelli on HW, upper one being the largest, spot near anal angle may absent
3. Two pairs of black lines on FW cell, some times outer pair is filled in blue
4. Black on FW cell end
5. Two wavy sub marginal lines on HW
6. Under side is a lighter shade than upper side, prominence of markings highly variable

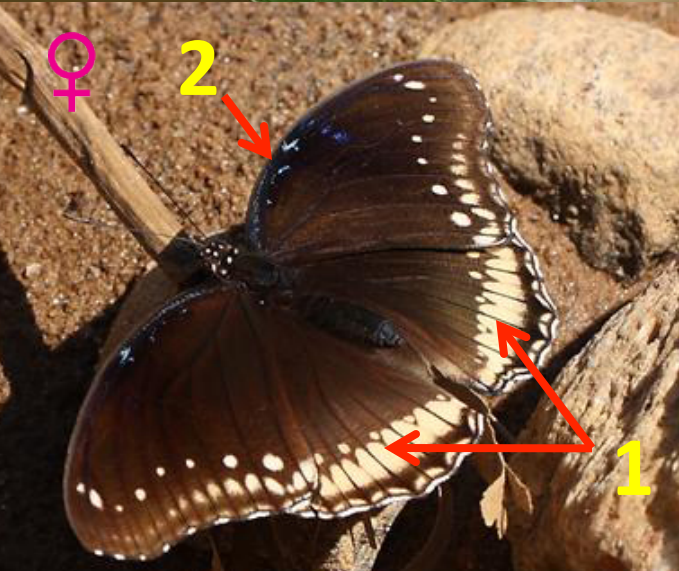
* can be mistaken for leopard at flight

32, Great Eggfly (*Hypolimnys bolina*)



Male

1. Circular white patch on HW and two elongated patches on FW
2. Blue iridescence of these patches varies according to viewing angle

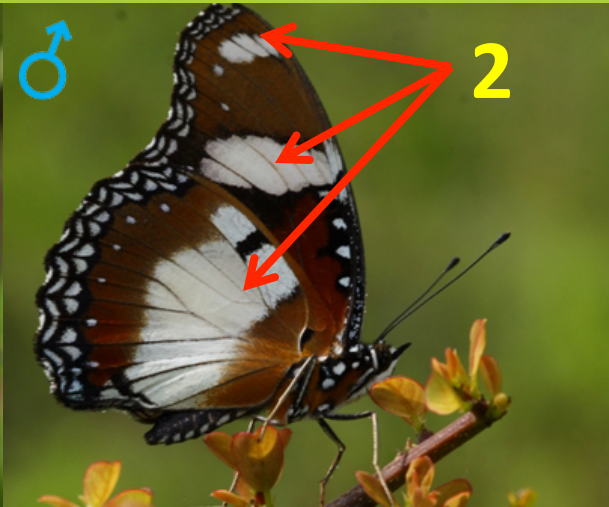
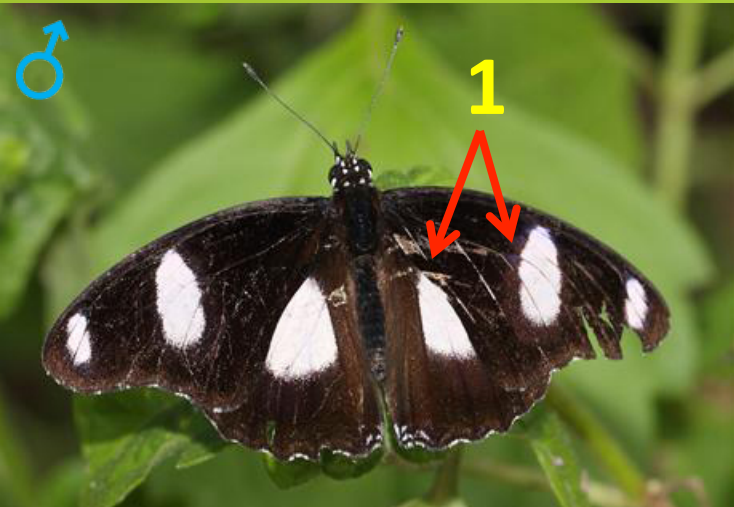


Female

1. Creamy patches along the outer margin
2. Shiny blue scales may present near the upper margin of FW

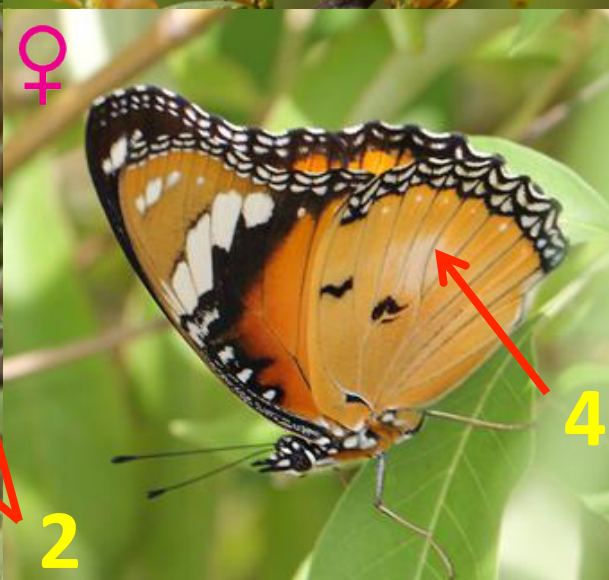
* Under side varies, usually female lacks the white median lines

33, Danaid Eggfly (*Hypolimnys misippus*)



Male

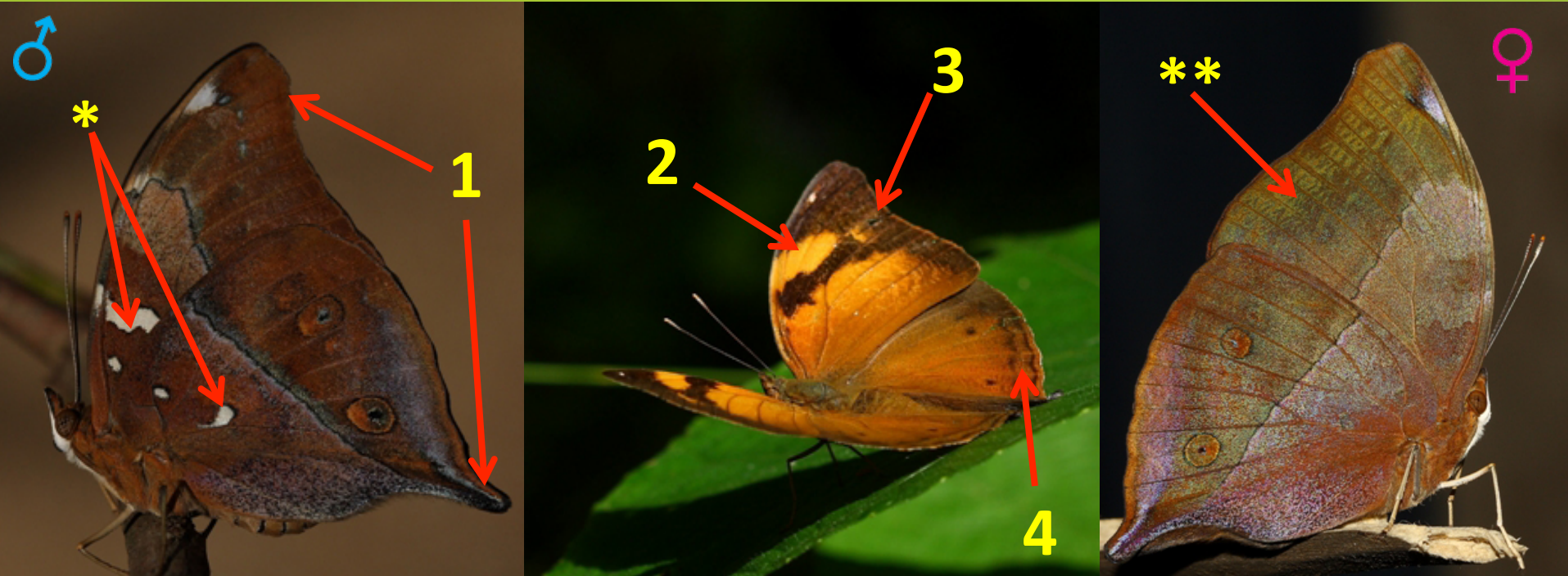
1. Less blue iridescence than Great Eggfly
2. Broad white median band on HW and two elongated bands on FW on under side



Female

1. Mimics the plain Tiger
 2. Wavy outer margins
 3. No black spots on HW cell
 4. Under side is lighter than the male and has no white band on HW
- * A rare form has no black apex nor white sub apical band

34, Autumn Leaf (*Doleschallia bisaltide*)



1. FW apex slightly falcate, HW tornus elongated to resemble a leaf
2. An orange band intrudes in to the broad black apex on FW
3. Black FW outer margin
4. A marginal and a sub marginal line on HW

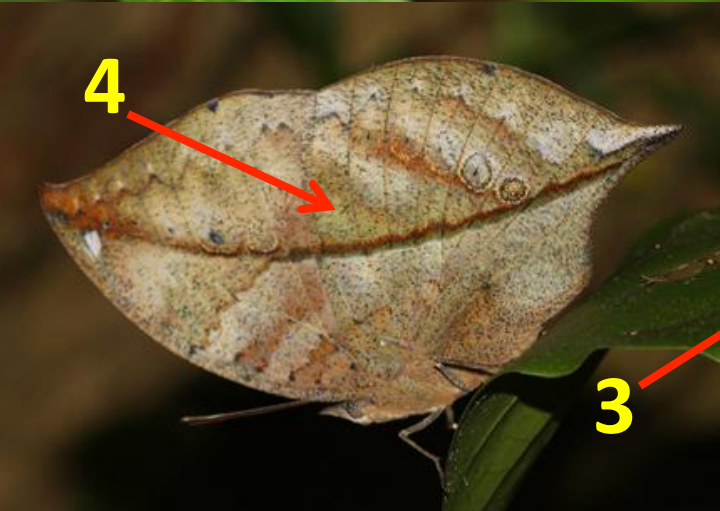
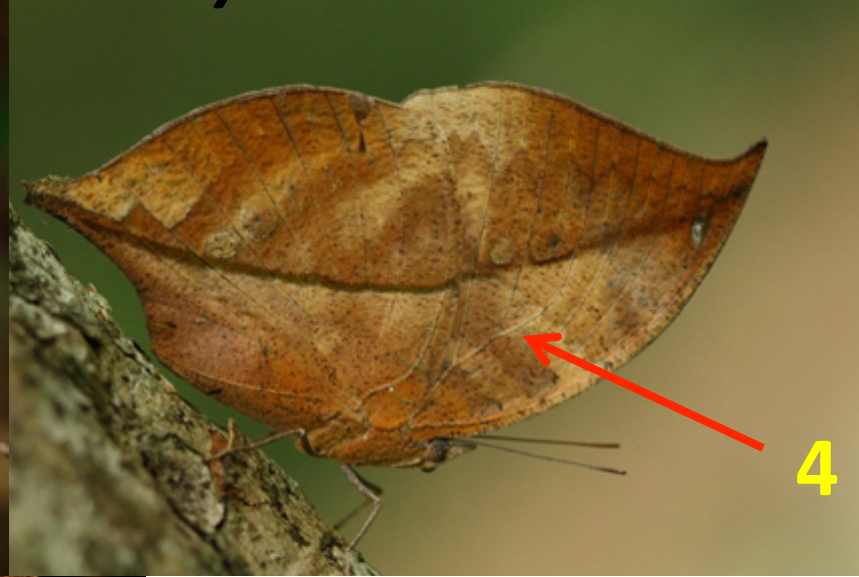
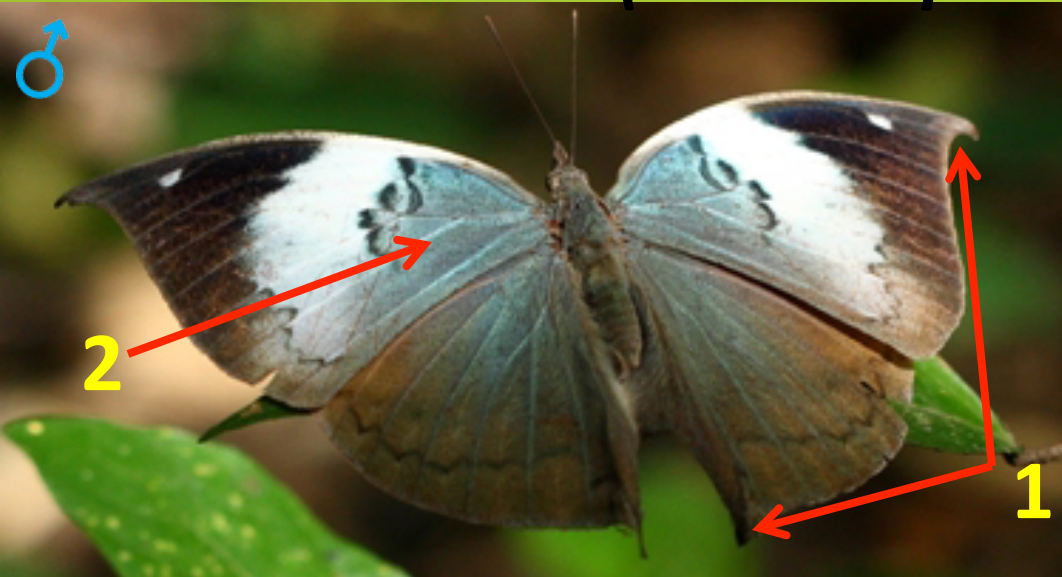
Under side

* Male – has irregular white patches

** Female – has a greenish gloss

35, Sri Lanka Blue Oak Leaf (E)

(*Kallima philarchus*)



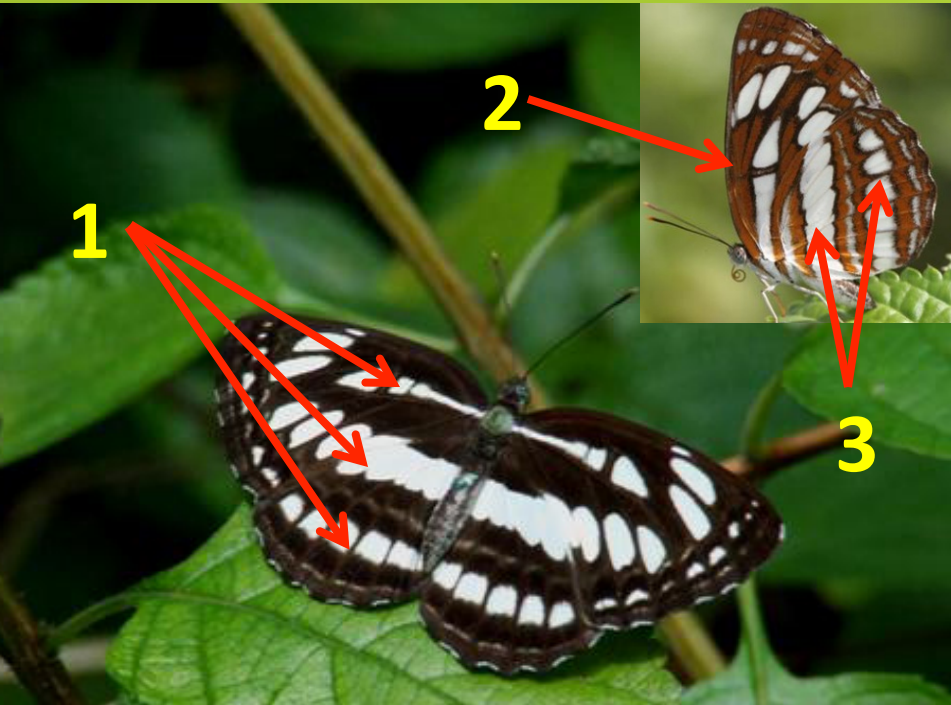
1. FW apex & HW tornus elongated and pointed
2. Male has brighter blue on FW discal band
3. Female has brown scales on HW
4. Color and pattern on under side highly variable

36, Common Lascar (*Pantoporia hordonia*)



1. Smaller than Common Sailor
2. Distinct black and orange transverse bands including the marginal band on HW on upper side
3. Body is black at the frontal and median bands, other wise its pale
4. Under side is varying shades of yellow which is mottled in brown

37, Common Sailor (*Neptis hylas*)



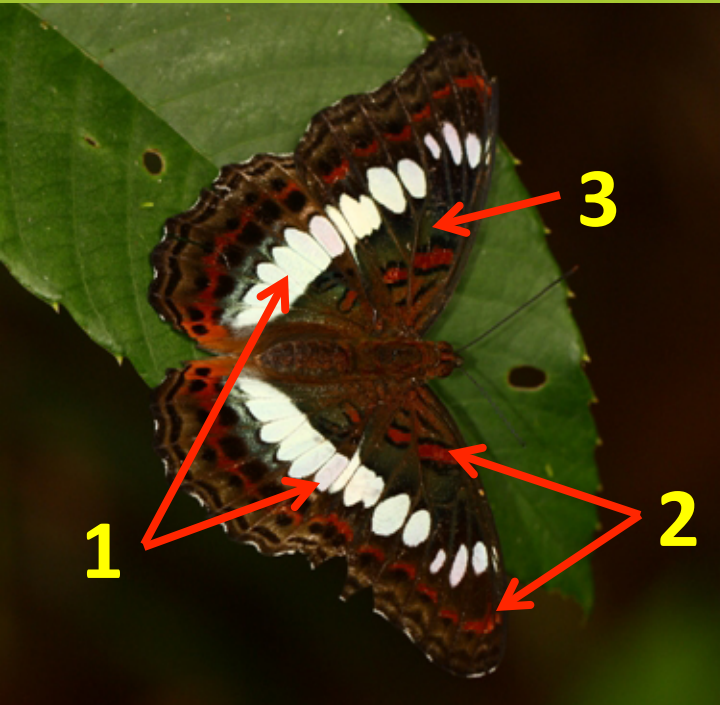
1. Tree parallel white lines on upper side
2. Different brown color than CS sailor
3. White patches repeat on under side with additional lighter streaks

38, Chestnut Streaked Sailor (*Neptis jumbah*)



1. Two parallel white lines on upper side
2. Female has a faint white sub marginal line
3. Under side has dark brown markings and has a broad lighter area near upper margin of HW with a brown spot

39, Commander (*Moduza procris*)



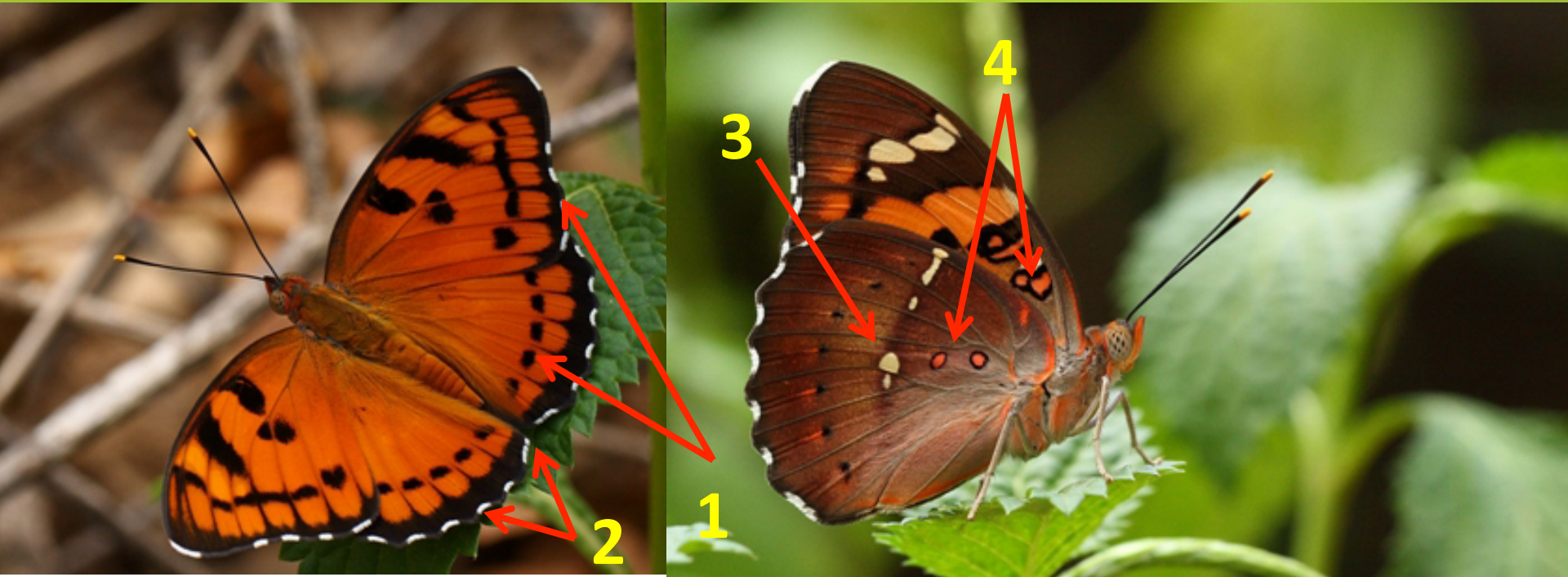
1. Prominent white discal band across both wings
2. Red patches basally and sub marginally
3. Basal area has a greenish gloss in newly emerged individuals
4. White discal band dissolved in grey-white back ground on under side.

40, Clipper (*Parthenos sylvia*)



1. Irregular large white spots on FW except in the base
2. Blue pattern may have a shining appearance
3. Body is alternately marked in black and blue transverse lines
4. Underside is white with shades of green and purple

41, Baronet (*Symphaedra nais*)



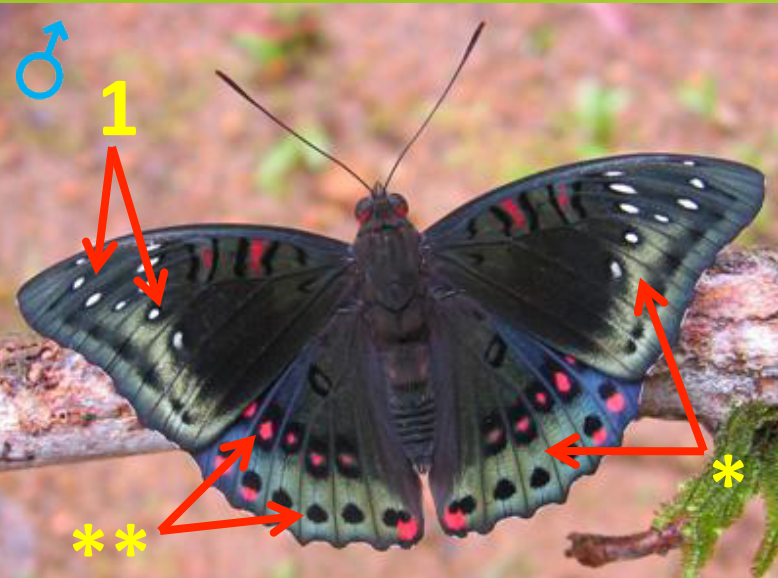
1. Marginal bands and sub marginal spots are black on all wings
2. Cilia marked in thin white streaks
3. White on under side highly variable, sometimes forming a oblique band across the HW
4. Each cell has red markings outlined in black, in HW they are much circular

42, Red spot Duke (*Dophla evelina*)



1. A red spot in between the two irregular black streaks on FW cell
2. Red colored hairs at the back of eyes
3. Green color has a metallic sheen
4. Pale colored underside has black lines on the middle of both wings, with red patches in between some of them

43, Gaudy Baron (*Euthalia lubentina*)



- * Metallic sheen vary according to the viewing angle
- * Row of sub marginal black spots and a row of discal red spots on HW

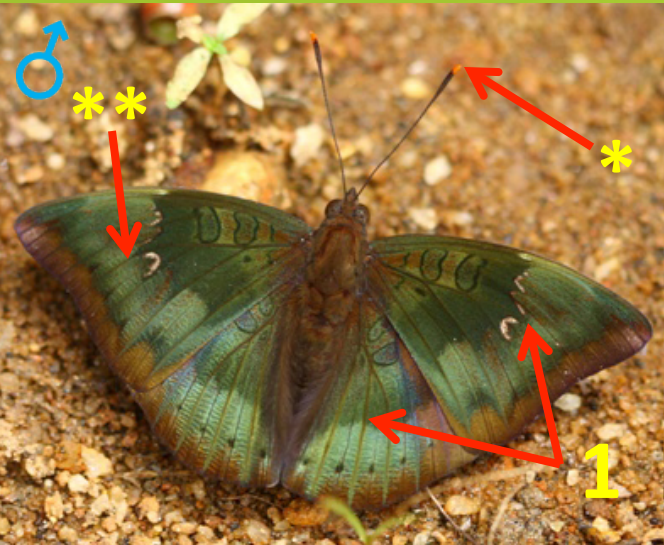
Male

1. Small white patches on FW
2. More red patches on under s

Female

1. Large white patches make a sub apical band on FW

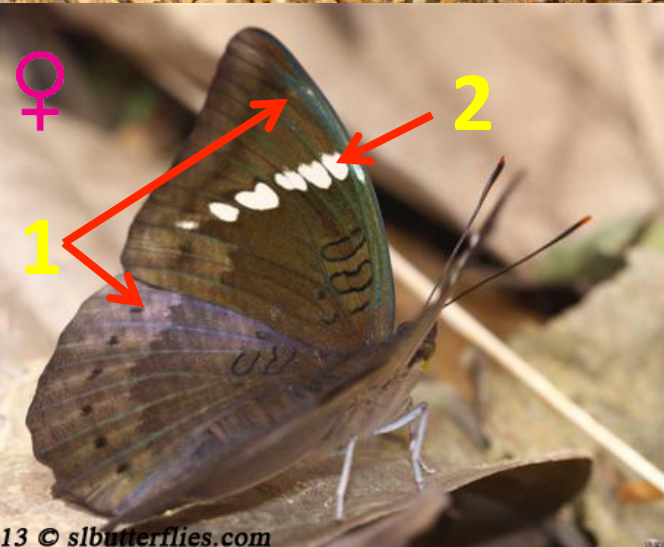
44, Baron (*Euthalia aconthea*)



- * Yellowish green proboscis, red antennae tips
- ** Metallic green color varies according to angle of view

Male

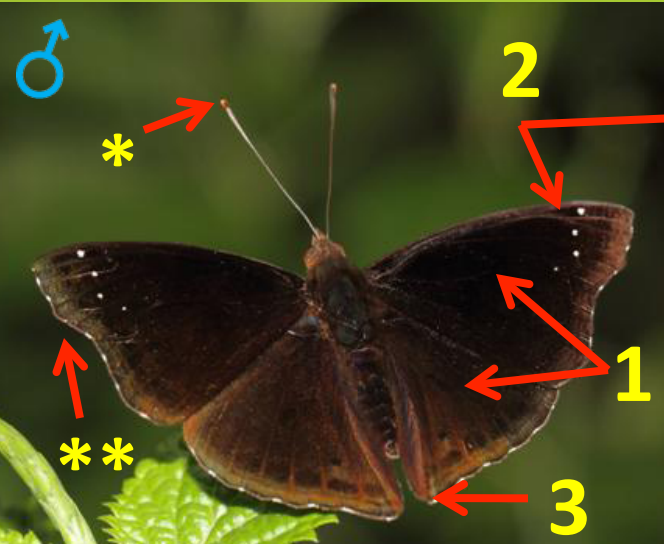
1. Green wings with minute white patches beyond the cell of FW



Female

1. Brown upper side with green gloss on FW & purple gloss on HW
2. Sub apical band of white patches are on both sides

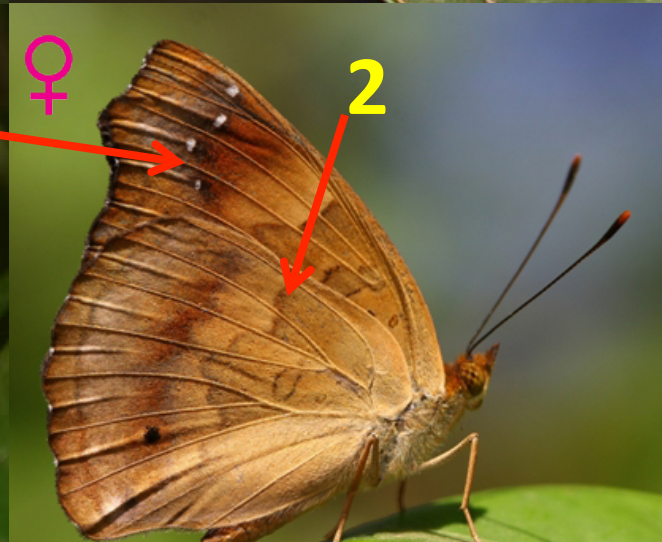
45, Black Prince (*Rohana parisatis*)



- * Reddish antennae tips
- ** Slightly falcate FW apex

Male

1. Velvety black sheen throughout the wings
2. Three or four tiny white apical spots
3. Pointed HW tornus



Female

1. Similar to Rustic, but with four or five white apical spots and without a black apical band
2. Under side is lighter than the male



Thank You!

