

# Butterflies Identification - Part II

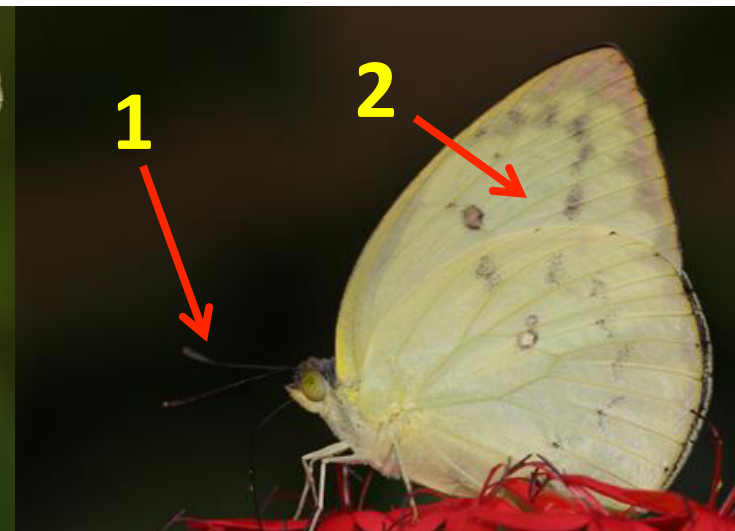
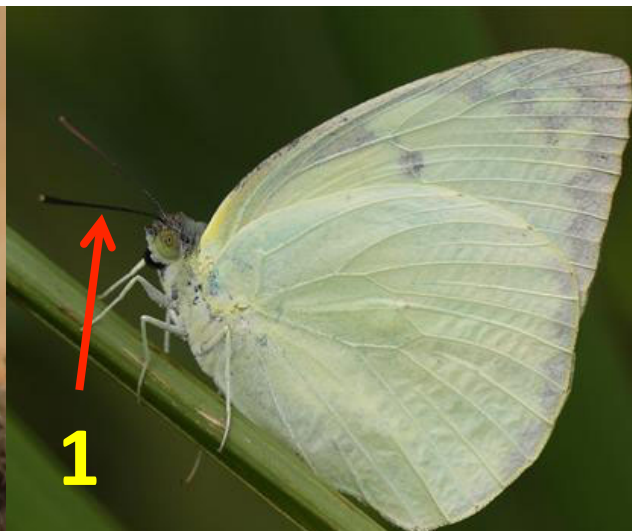
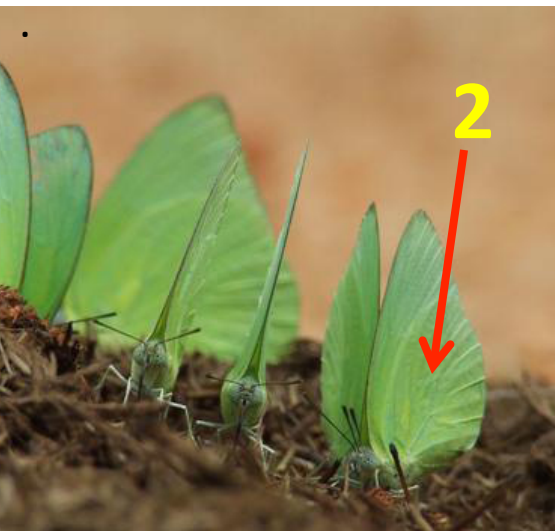
*by Malinga Prabhasara.*

# 16, Lemon Emigrant (*Catopsilia pomona*)

- According to color of its antennae this species divided in to two forms.
- No mottled marking in all forms, may have silver spots.
- Females have much broader marginal bands on fore wing upper side in all forms.

## *The 'crocale' forms*

1. Antennae **black** colored.
2. Light greenish yellow wings.

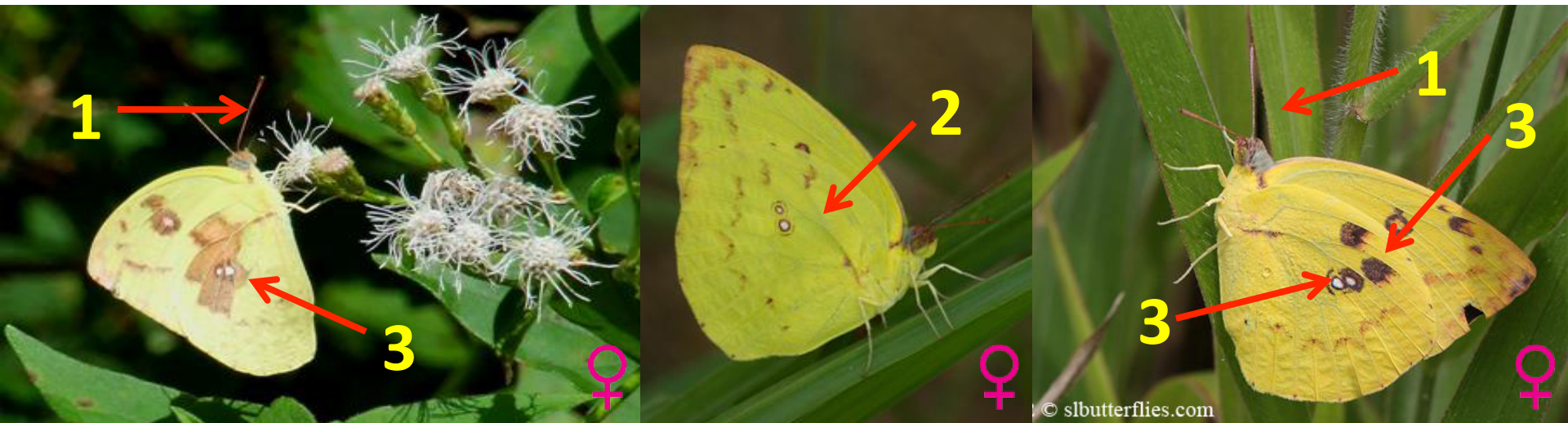




# 16, Lemon Emigrant (*Catopsilia pomona*) cont...

## The 'pomona' forms

1. Antennae red or pink colored.
2. Have yellow wings on both side.
3. Females of this forms may have brown patches and silver spots on under sides.



## 16, Lemon Emigrant (*Catopsilia pomona*) cont...

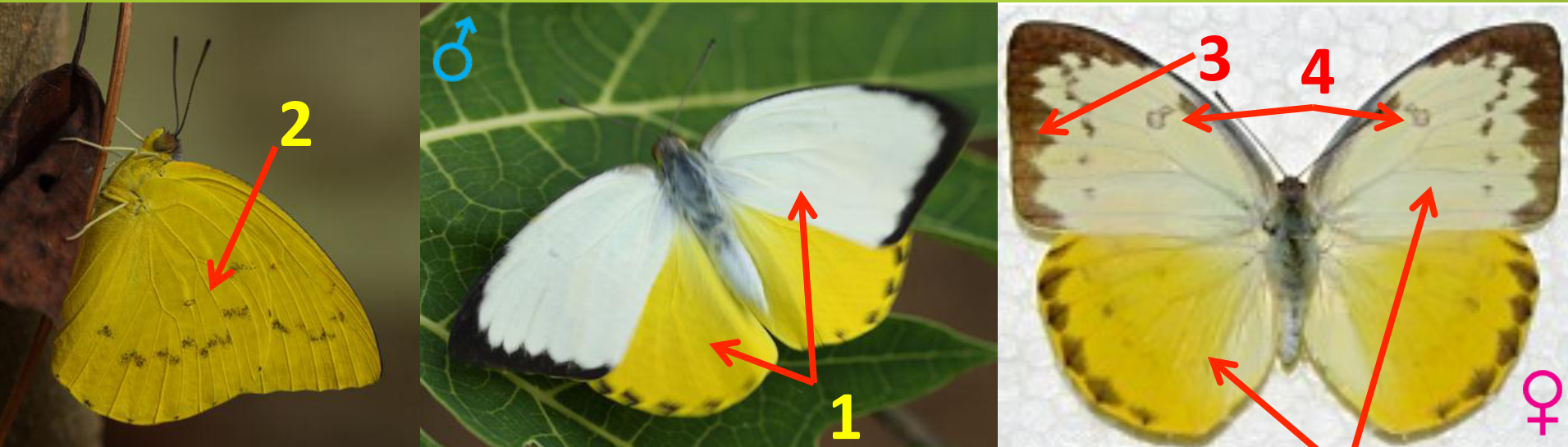


1. Form *alcmeone*
2. Form *pomona*
3. Form *catilla*
4. Form *hilaria*
5. \* Another form, could be "*jugurtha*"



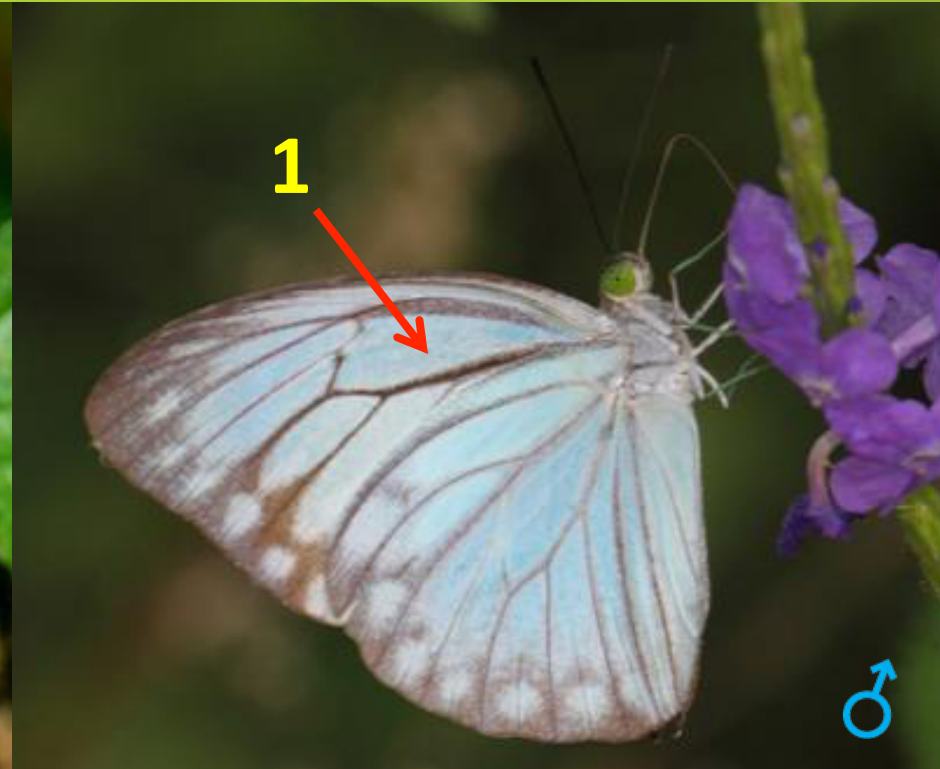


## 17, Orange Migrant (*Catopsilia scylla*)



1. Forewing is white and hind wing is yellow on upper side.
2. Under side is always yellow.
3. **Female** has much broader marginal bands.
4. **Female** has spot on forewing cell.

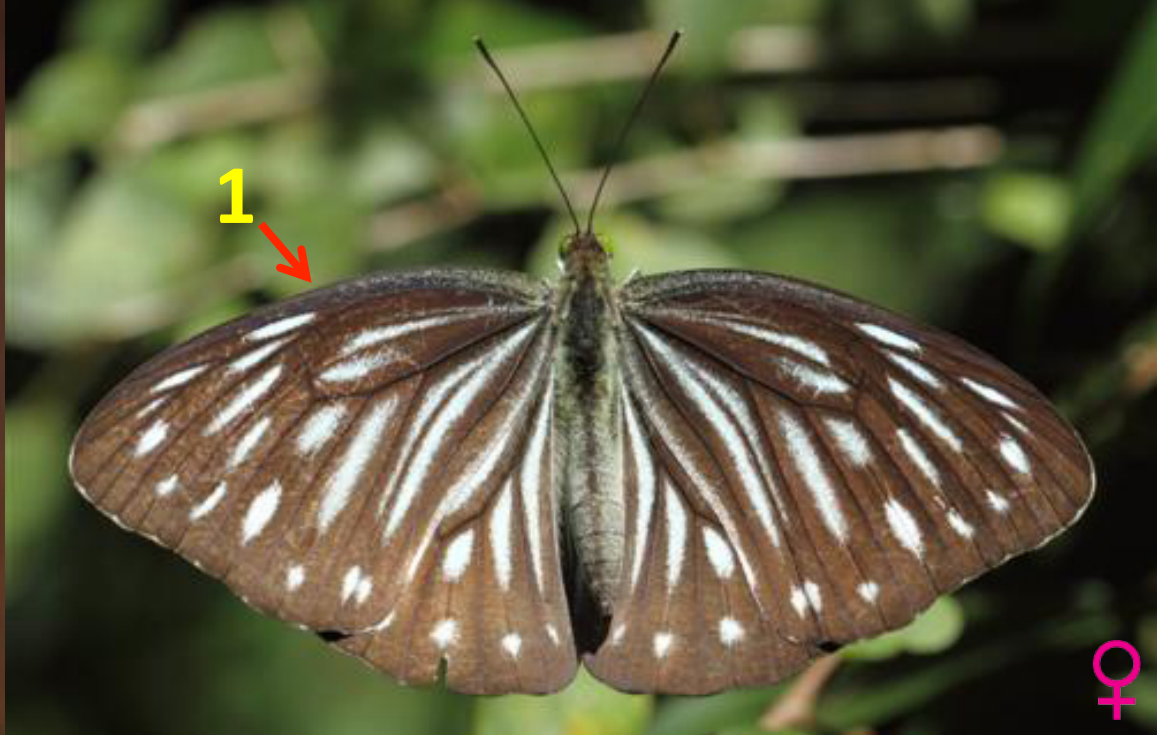
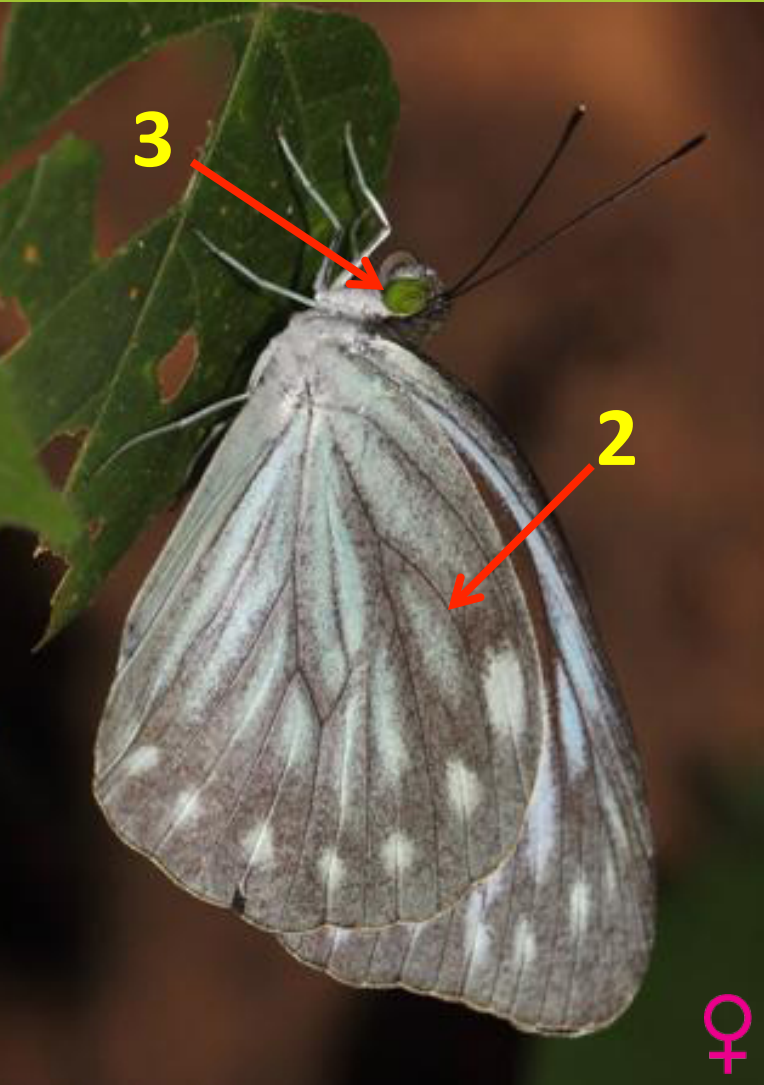
# 18, Dark Wanderer (*Pareronia ceylanica*) Male



1. Underside has more blue than female.
2. Thickness of marginal bands on upper side is broader in dry season form.



# 18, Dark Wanderer (*Parereronia ceylanica*) female



1. Mimics the Glassy tiger.
2. Underside has less blue than the male.
3. But eyes are pale.

## 19, Small Salmon Arab (*Colotis amata*)



1. Outer margin and upper margins on upper side of forewings has broad black borders.
2. ELONGATED Black patch at end of the forewing cell touches the black upper margin of forewing.
3. **Females** upper side white and heavily marked on underside. \*\*
4. Undersides are yellow with gray dusting.



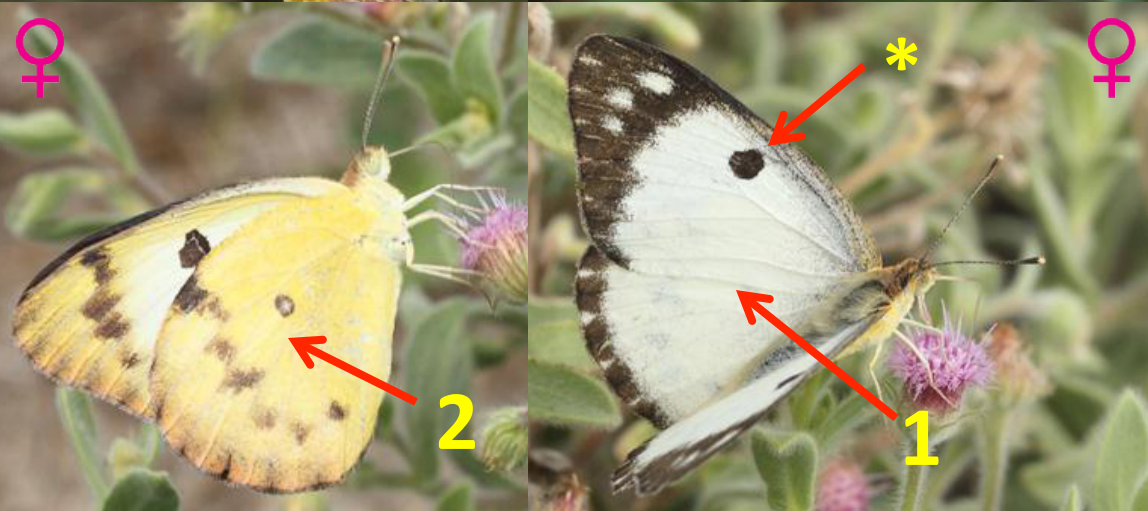
## 20, Large Salmon Arab (*Colotis fausta*)



- Circular Black patch at end of the forewing cell doesn't touch the black upper margin.

### **Male**

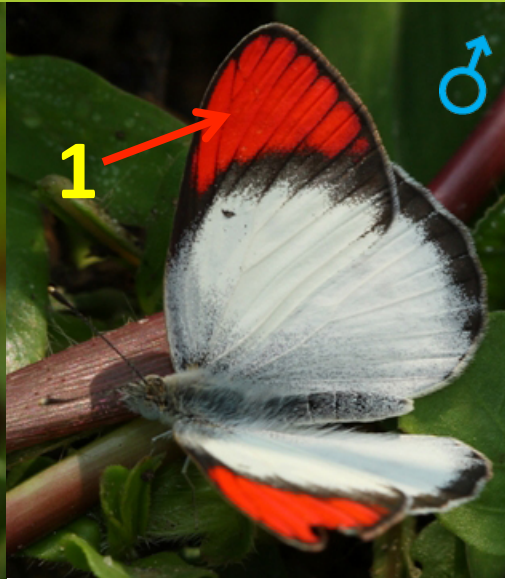
1. Upper side Salmon color.



### **Female**

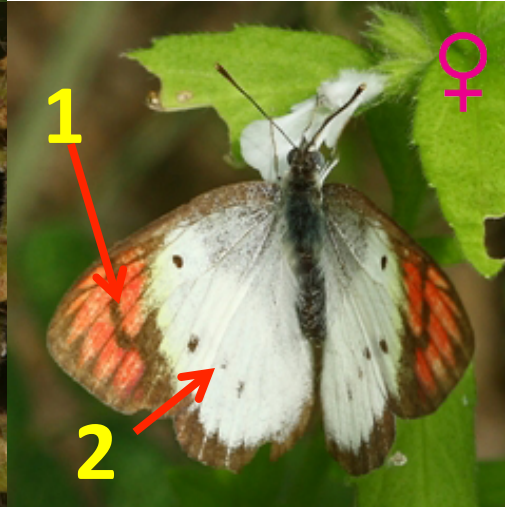
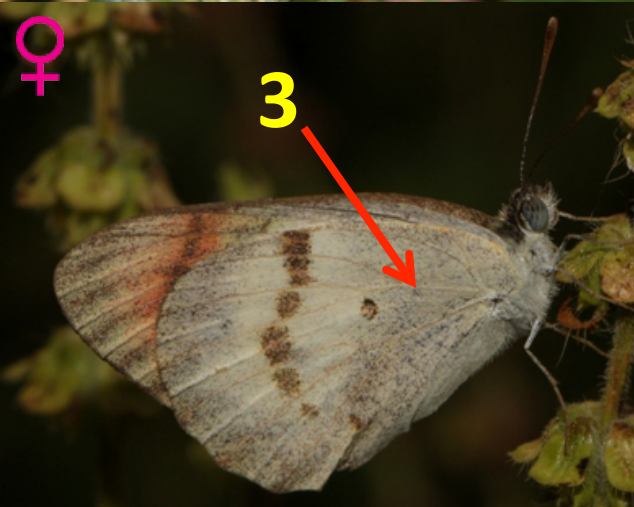
1. Upper side white.
2. Under sides always lighter than males.

## 21, Crimson Tip (*Colotis danae*)



### **Male**

1. Crimson apex on fore-wing with a very **thin** black marginal band.

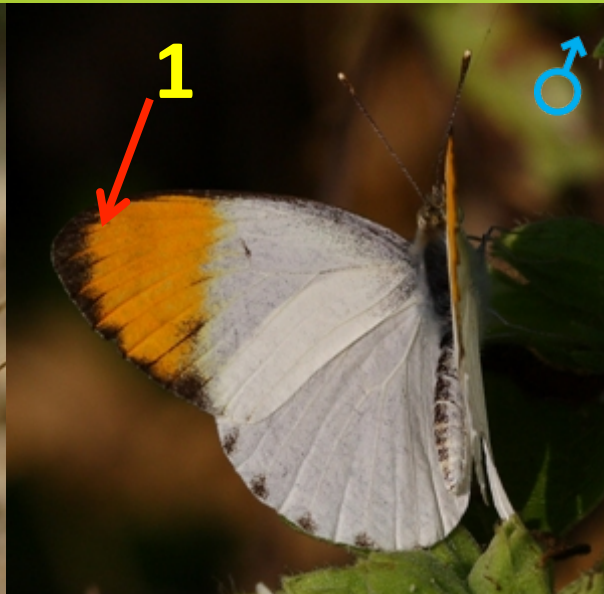
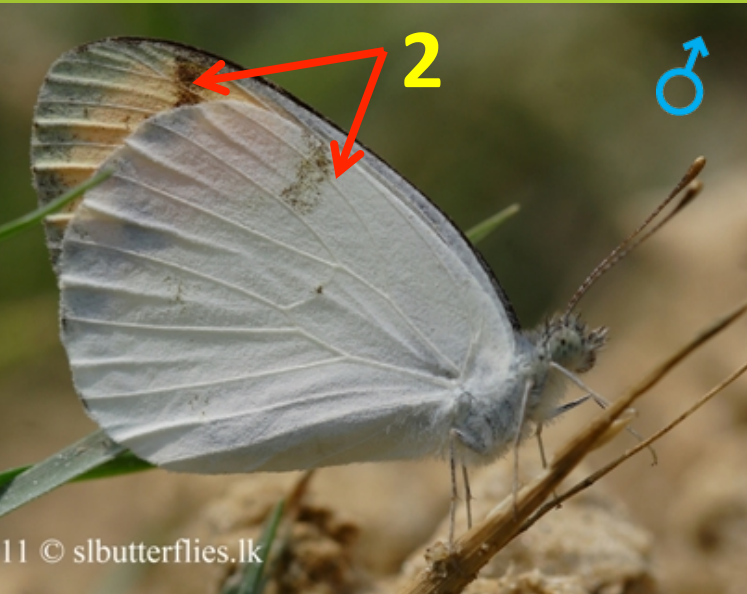


### **Female**

1. Crimson patch is truncated by a black line.
2. Black spots on discal area.
3. Underside with gray color dust pattern.

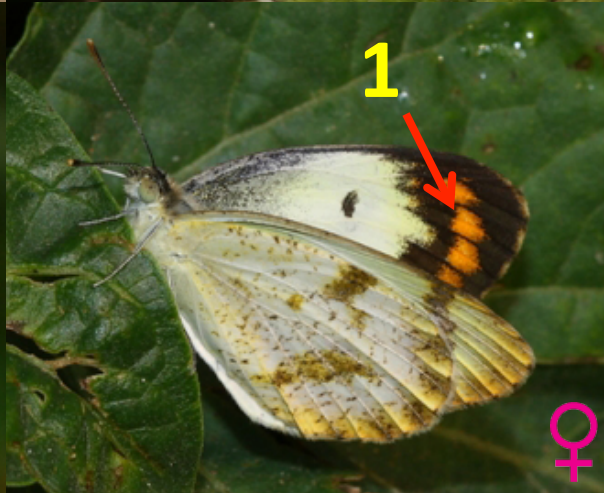
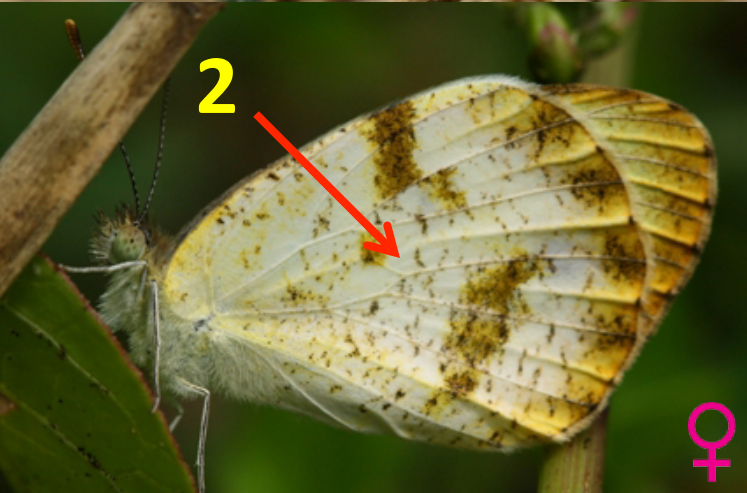


## 22, Plain Orange Tip (*Colotis eucharis*)



### Male

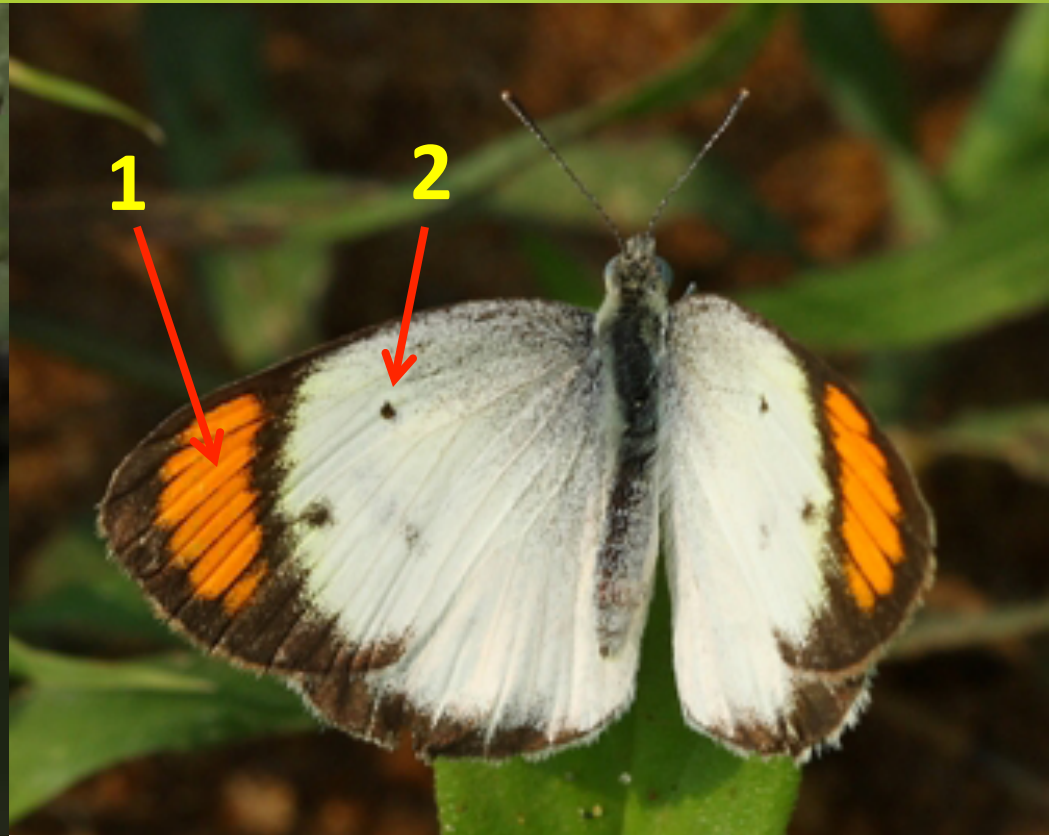
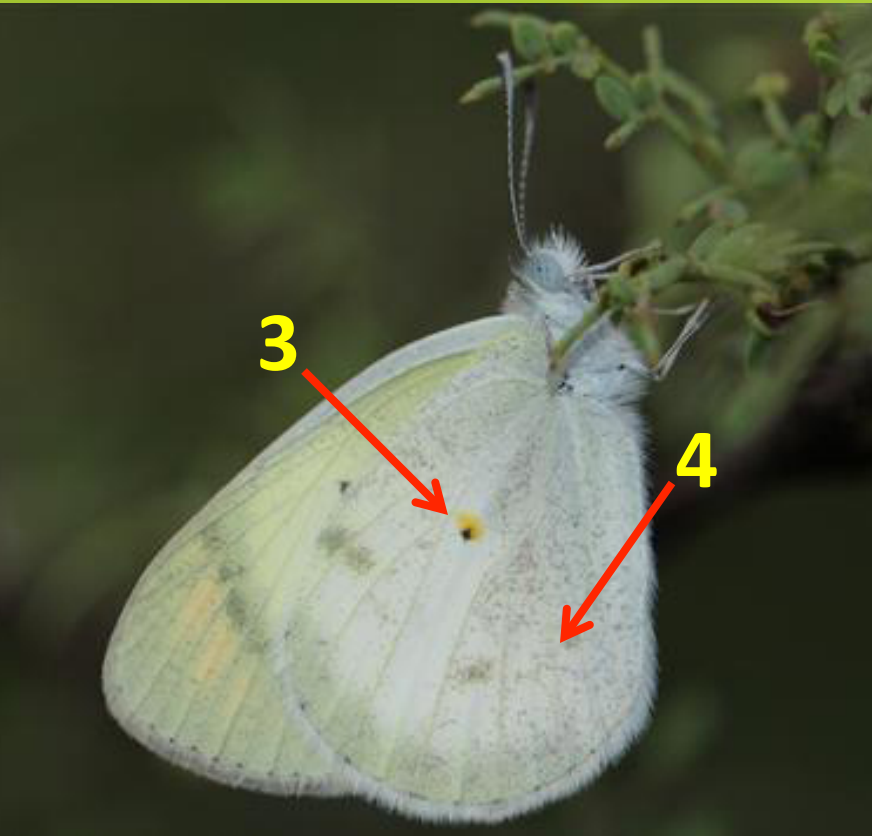
1. Orange fore-wing apex with **thin** black margins.
2. Underside almost white with few golden speckling on fore-wing.



### Female

1. Orange band on black apex.
2. Golden speckles on underside.

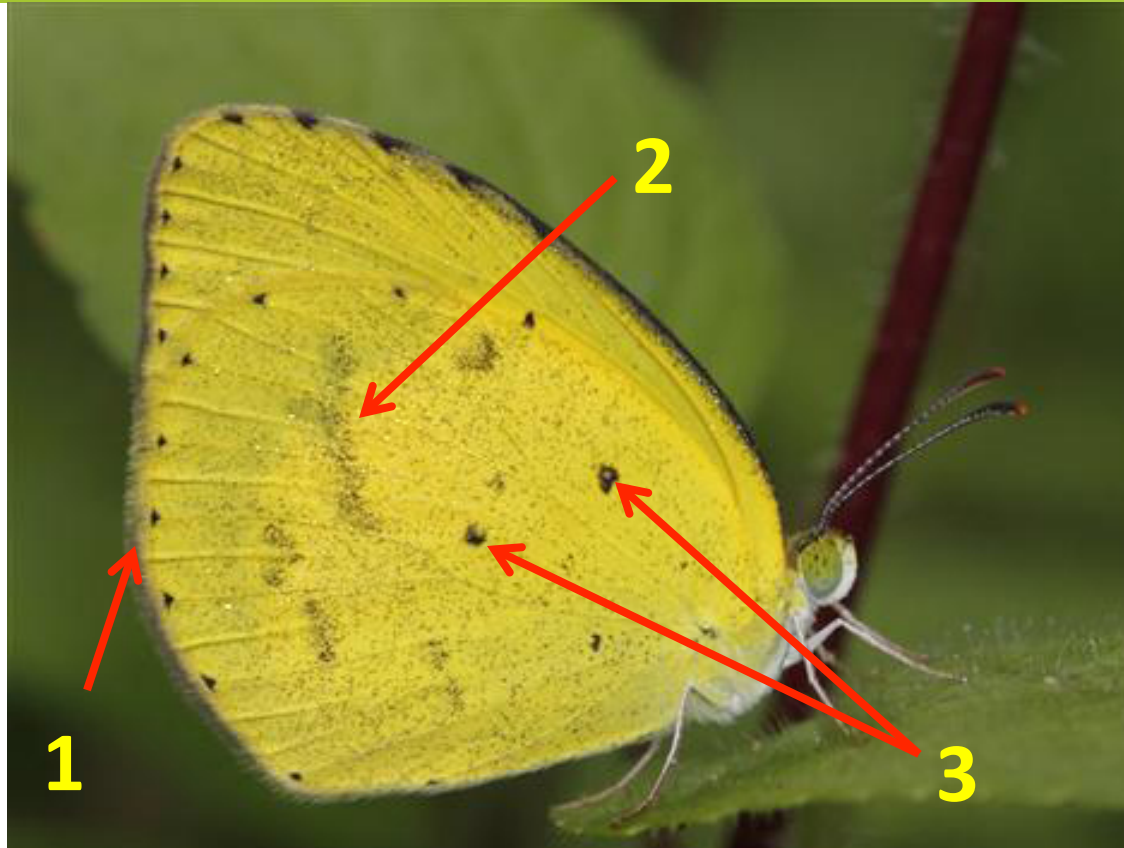
## 23, Little Orange Tip (*Colotis etrida*)



1. **Rich** orange band on black apex.
2. Minute black spot on the fore wing cell.
3. A black dot at the center of the wings on under side.
4. Under side finely marked with gray scales.

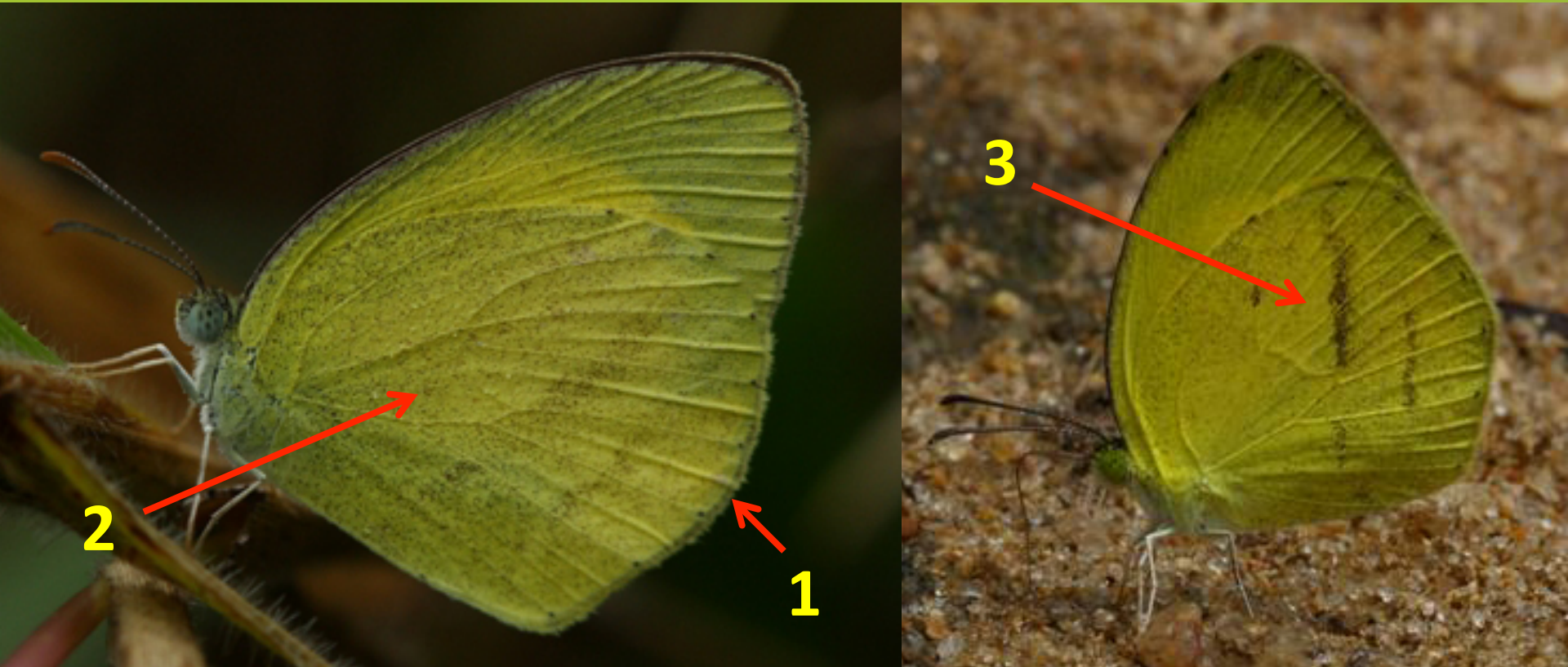


## 24, Small Grass Yellow (*Eurema brigitta*)



1. Outer margin of hind wing is truncated at half way.
2. Underside slightly dusted with black scales, some times forming diffused on hind wing.
3. Underside has black spots, but never on fore wing cell.

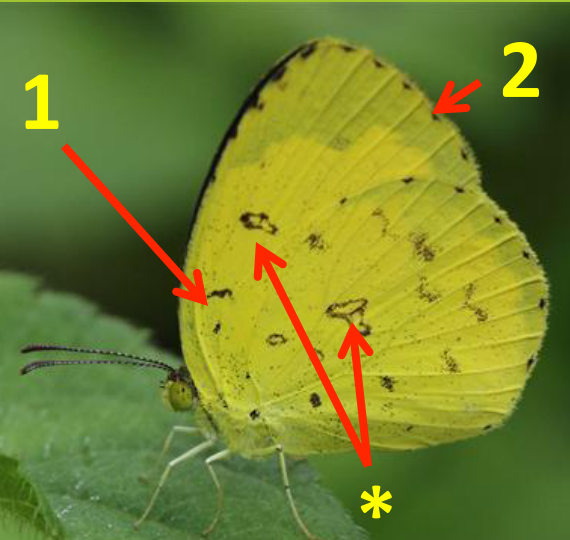
## 25, Spotless Grass Yellow (*Eurema laeta*)



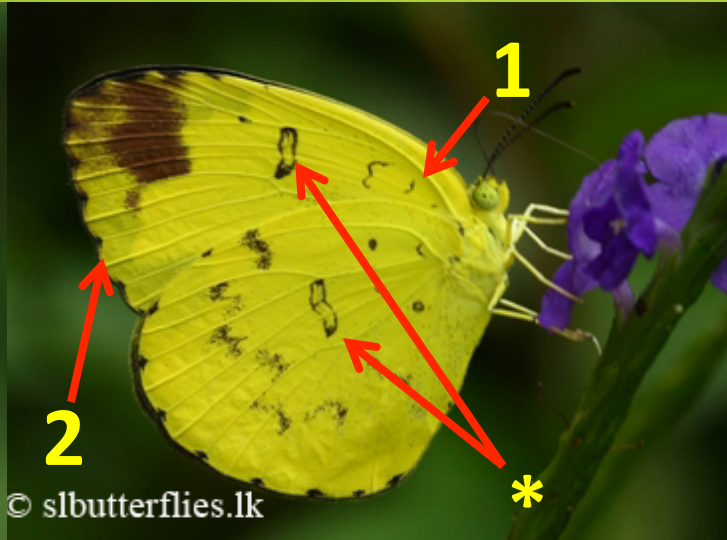
1. Outer margin of hind wing is truncated at half way.
2. Underside hasn't any black spots.
3. Underside finely dusted with black scales and that makes bands on hind wing.



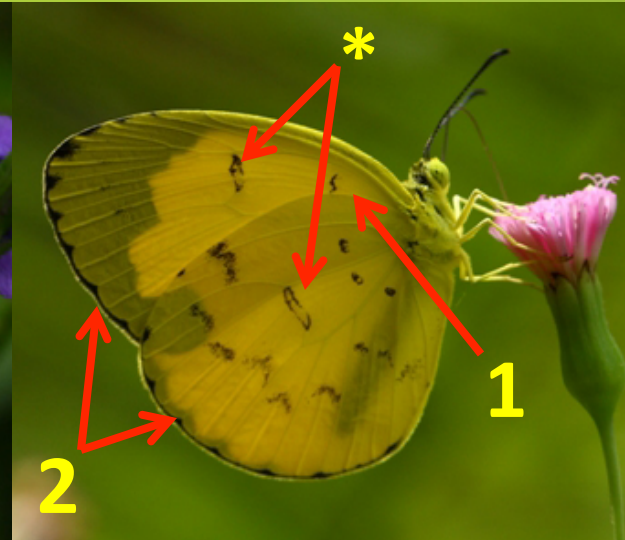
26, Common Grass Yellow  
(*Eurema hecabe*)



27, Three Spot Grass Yellow  
(*Eurema blanda*)



28, One-Spot Grass Yellow  
(E) (*Eurema ormistoni*)



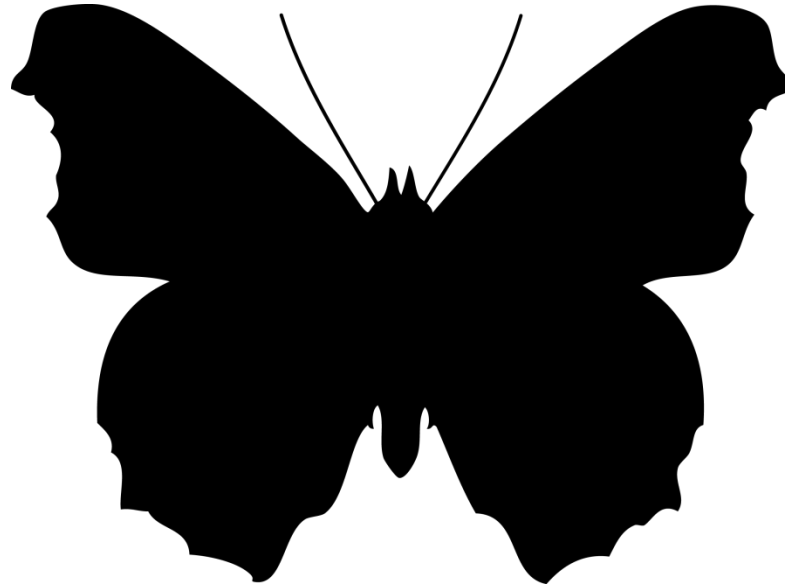
1. Two spots at the base of forewing cell.
2. Outer margin are not wavy.

1. Three spots at the base of forewing cell.
2. Outer margin is wavy.

1. One spot at the base of forewing cell.
2. Wings are much rounded.

• All these species have large black patches on each cell ends, leaving the background color in the centre.

# Family - Nymphalidae



- Number of Butterflies : 68
- Brush-Footed Butterflies

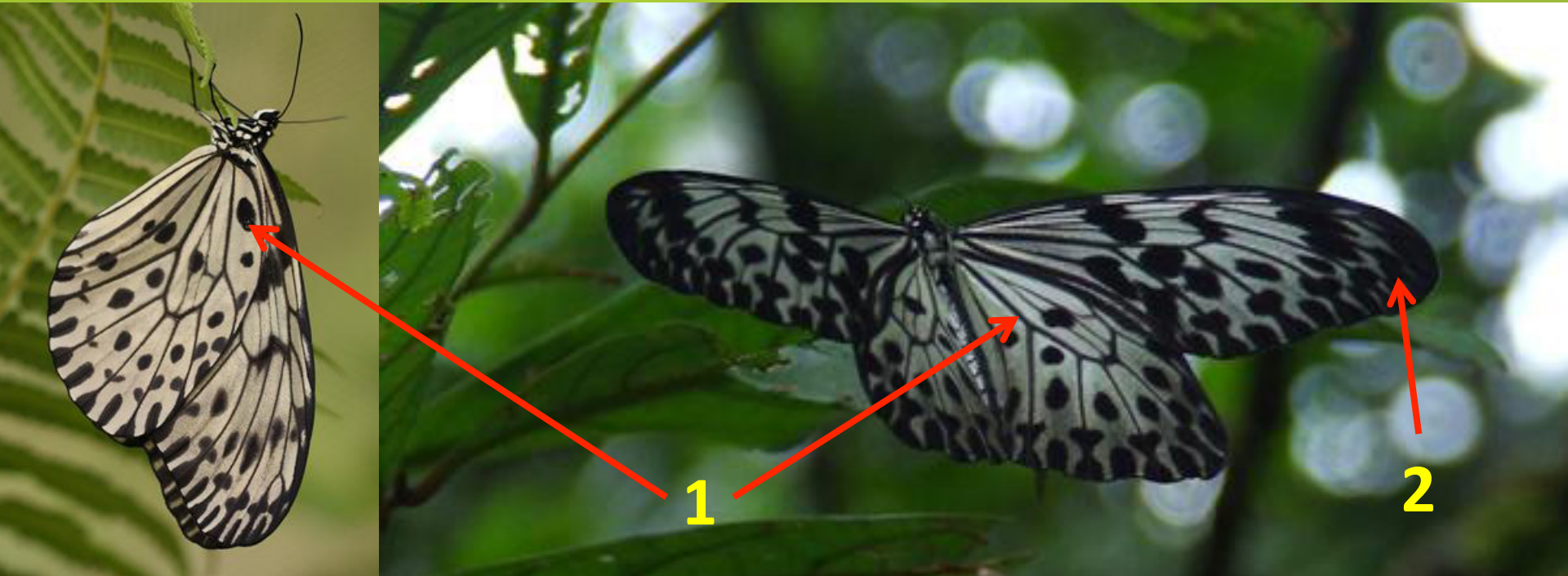


# Sub-family - Danaidae

## Slide [01-12]

- Number of Butterflies : 12

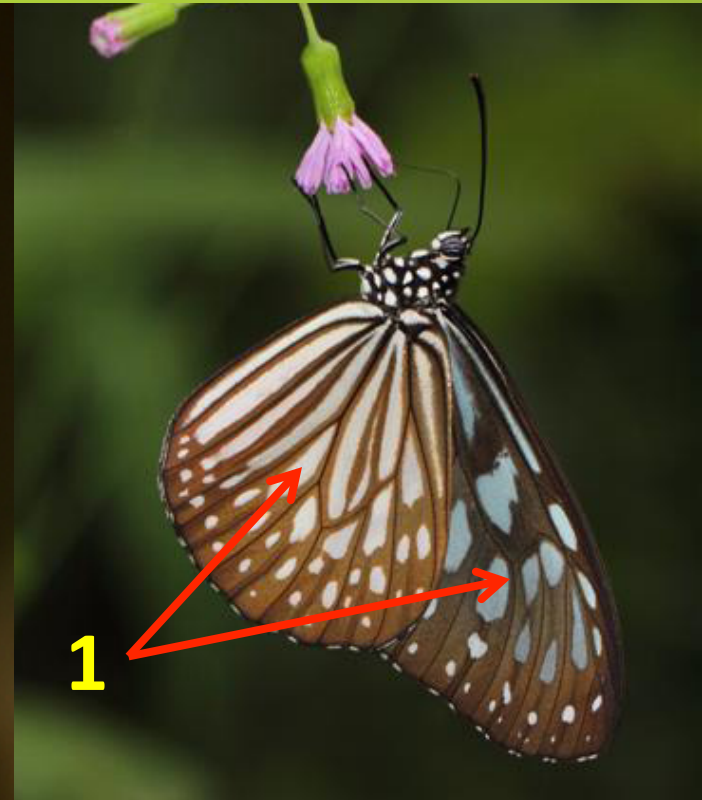
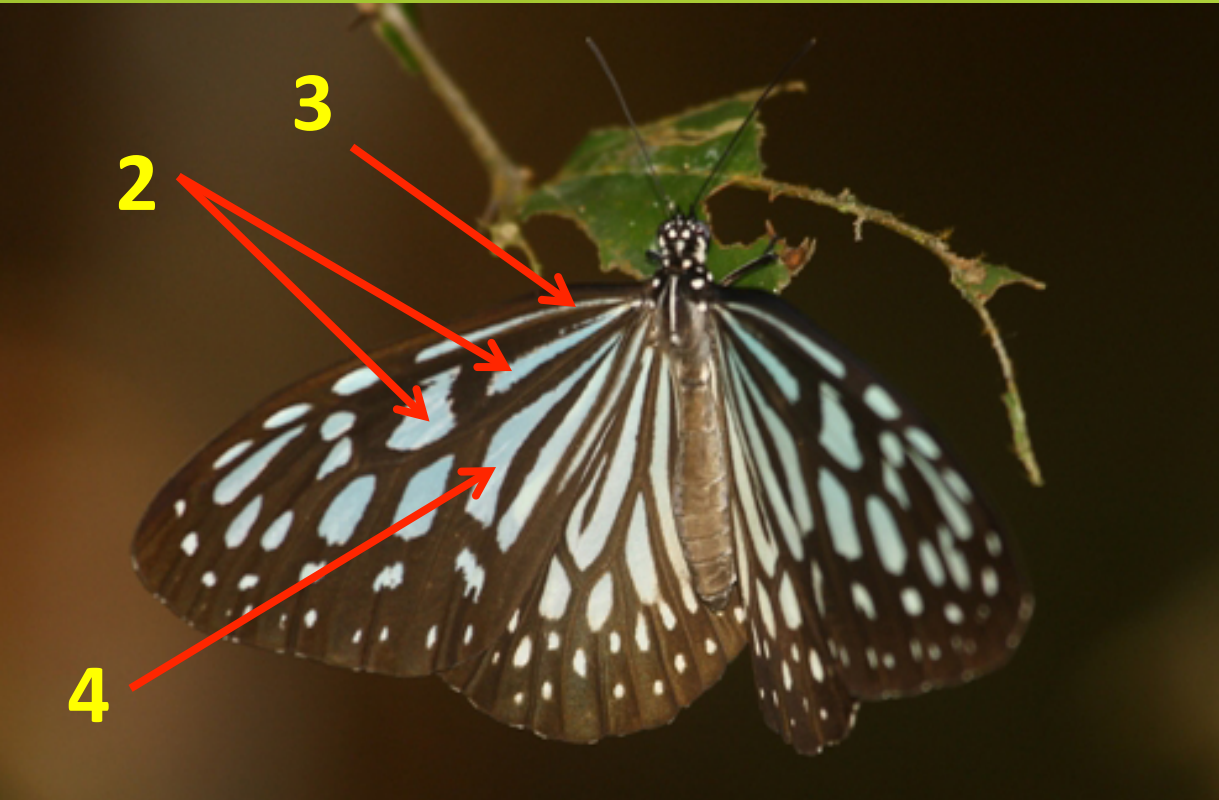
# 01, Sri Lanka Tree Nymph (E) (*Idea iasonia*)



- Endemic.
  - Floating flight.
  - Black patches are variable.
1. Veins are black on silvery white wings.
  2. Forewing is elongated with **blunt** apex.

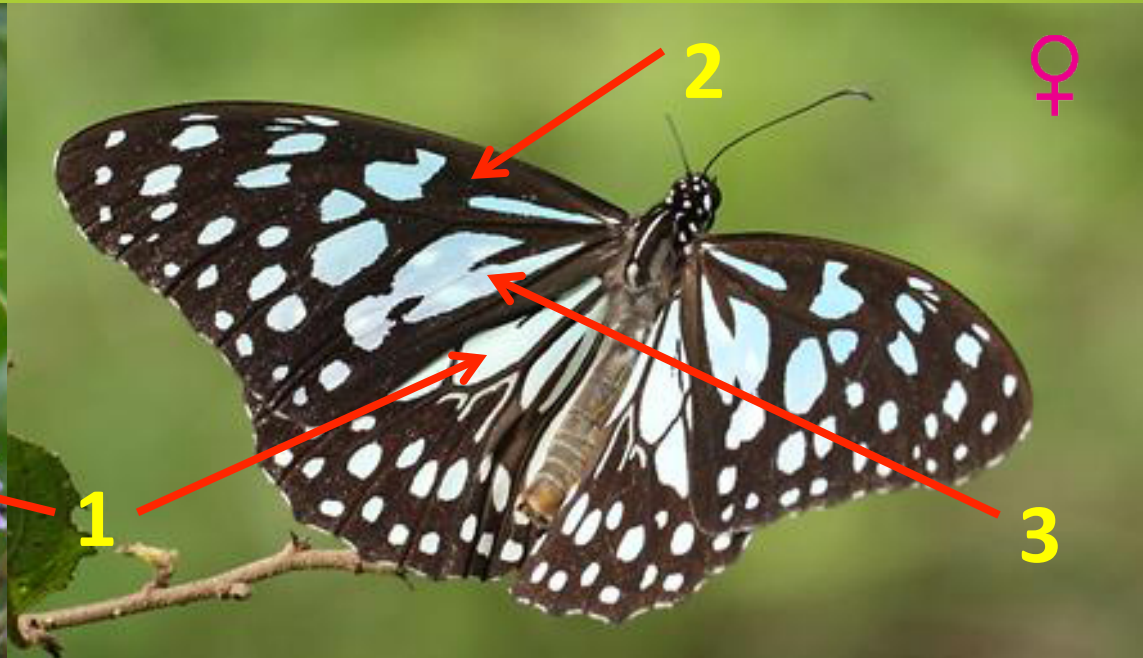
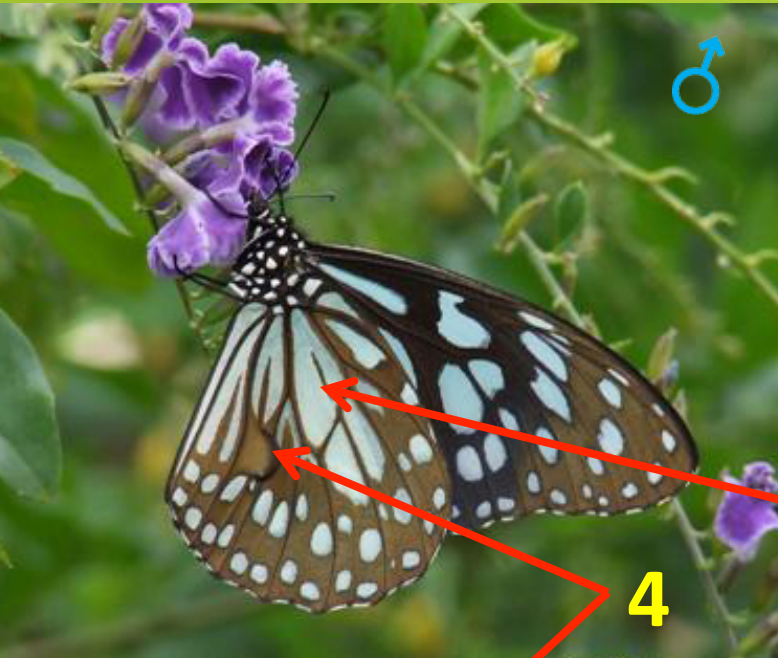


## 02, Blue Glassy Tiger (*Ideopsis similis*)



1. Markings on fore wing is bluish while hind wing is whitish, clearly visible on underside.
  2. Basal streak and irregular distal spot on FW cell.
  3. Thin streak along upper margin.
  4. Two broad streaks below the cell.
- Male has no sex brand.

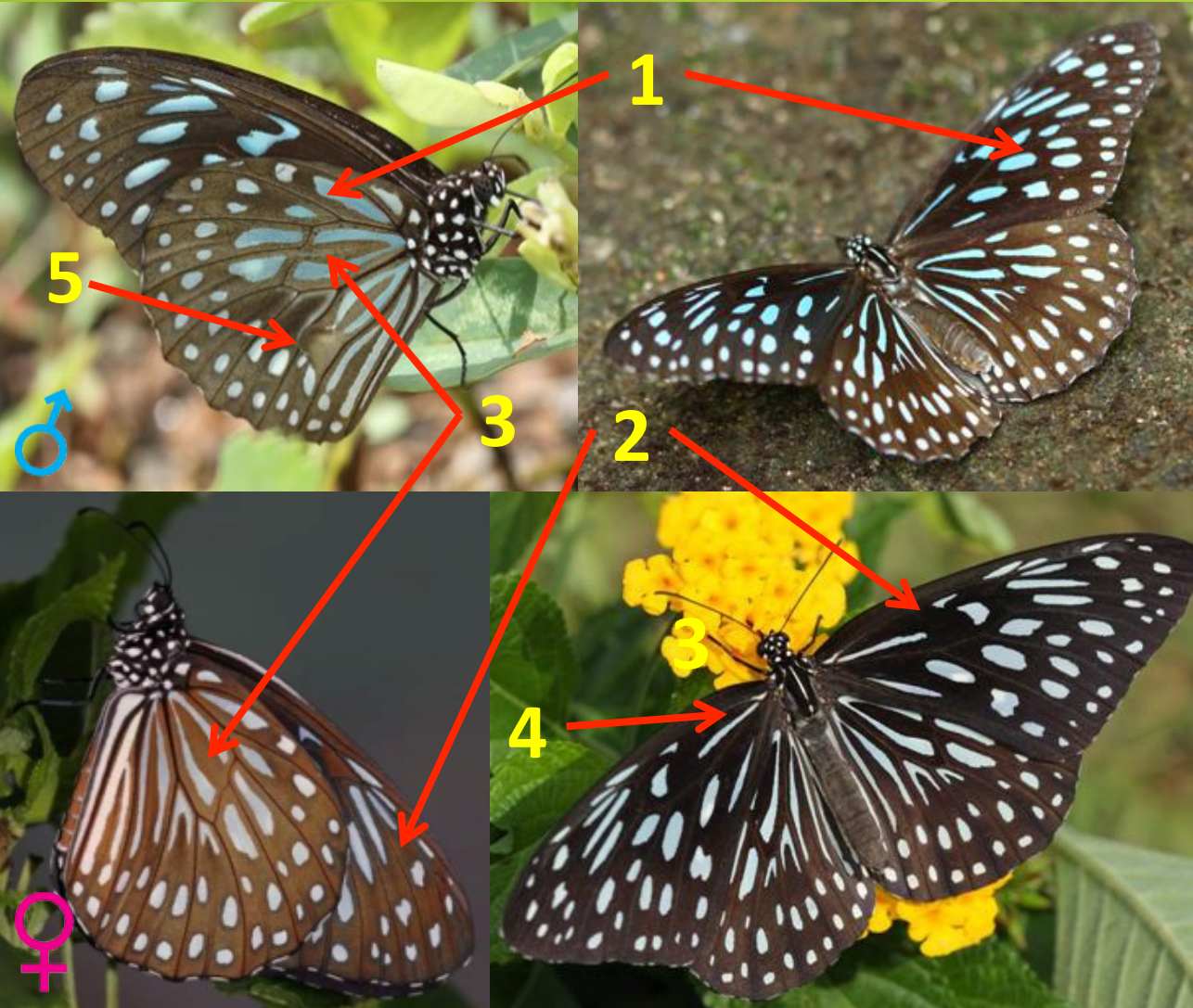
## 03, Blue Tiger (*Tirumala limniace*)



- Comparatively Large.
- Blue markings on fore wing are large
- 1. Hind-wing cell almost complete with blue.
- 2. Basal streak and irregular distal spot on FW cell.
- 3. Patch below the cell is large and irregular.
- 4. **Male** has sex brand.

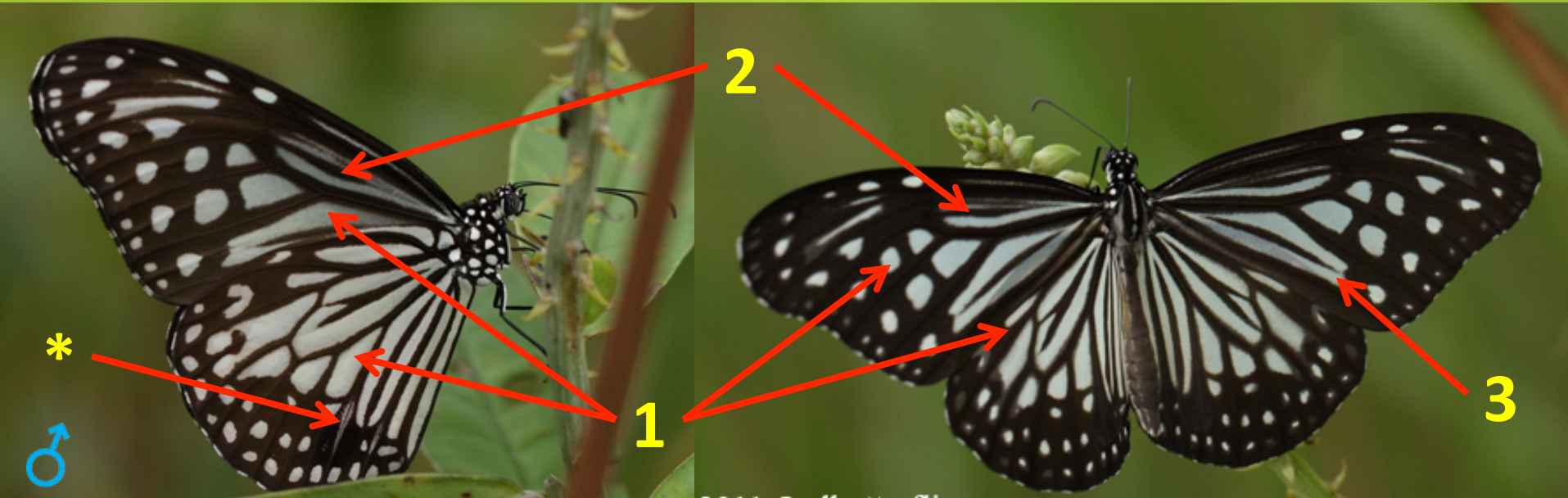


## 04, Dark Blue Tiger (*Tirumala septentrionis*)



1. Dark blue streaks and spots on both wings
2. Background more extensive.
3. Two streaks on hind wing cell.
4. Basal streak and distal spot on FW cell are small.
5. **Male** has a sex brand.

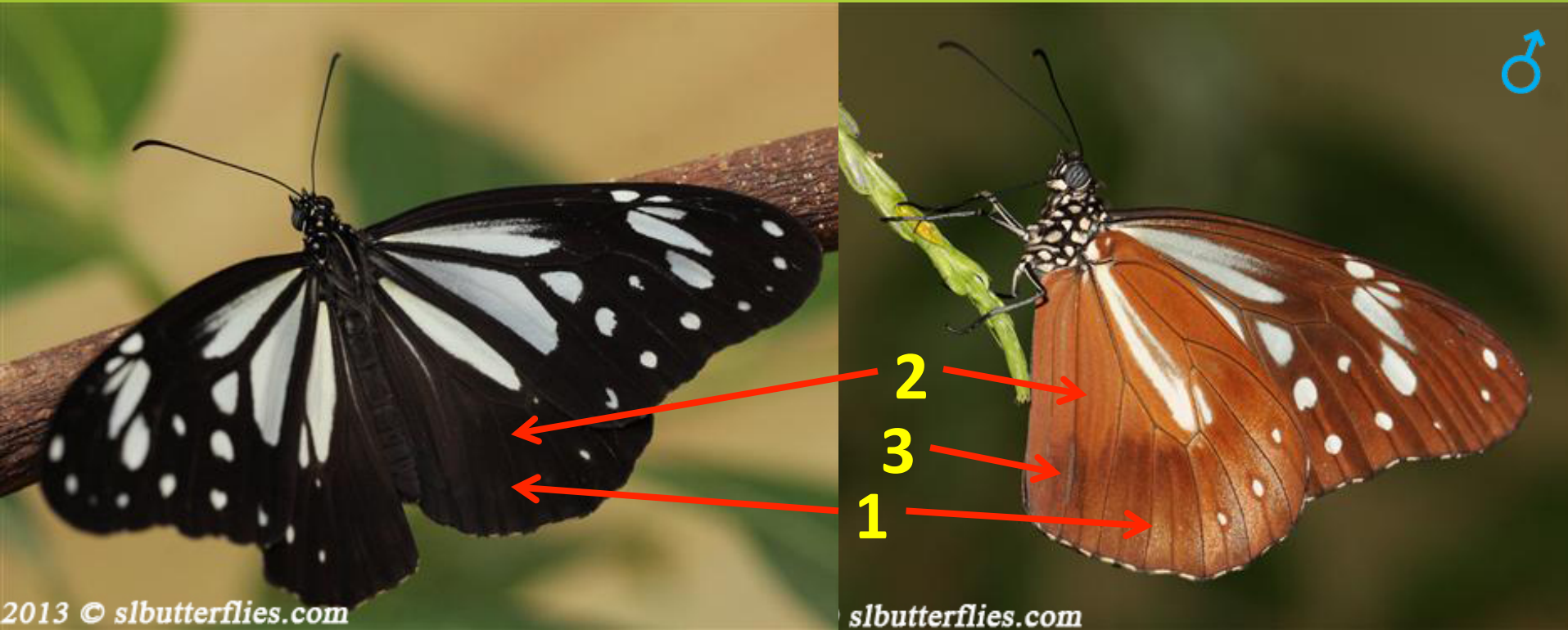
## 05, Glassy Tiger (*Parantica aglea*)



1. Marking on both wings are whitish.
  2. Fore-wing cell has a distally bifid streak, No spots.
  3. Two broad streaks below the cell, No thin streak along upper margin.
- **Male** has sex brand on hind wing underside.



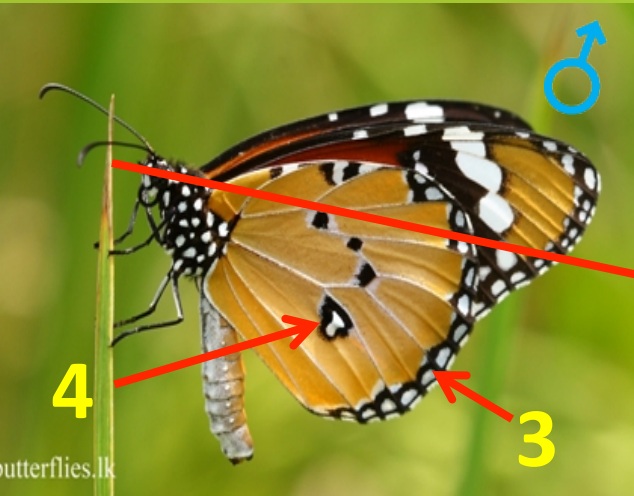
## 06, Sri Lankan Tiger (E) (*Parantica taprobana*)



- Endemic
- 1. Chocolate brown underside and brownish black upper side.
- 2. Blush white patches are fewer on hind wing.
- 3. Male has sex brand.



## 07, Plain Tiger (*Danaus chrysippus*)



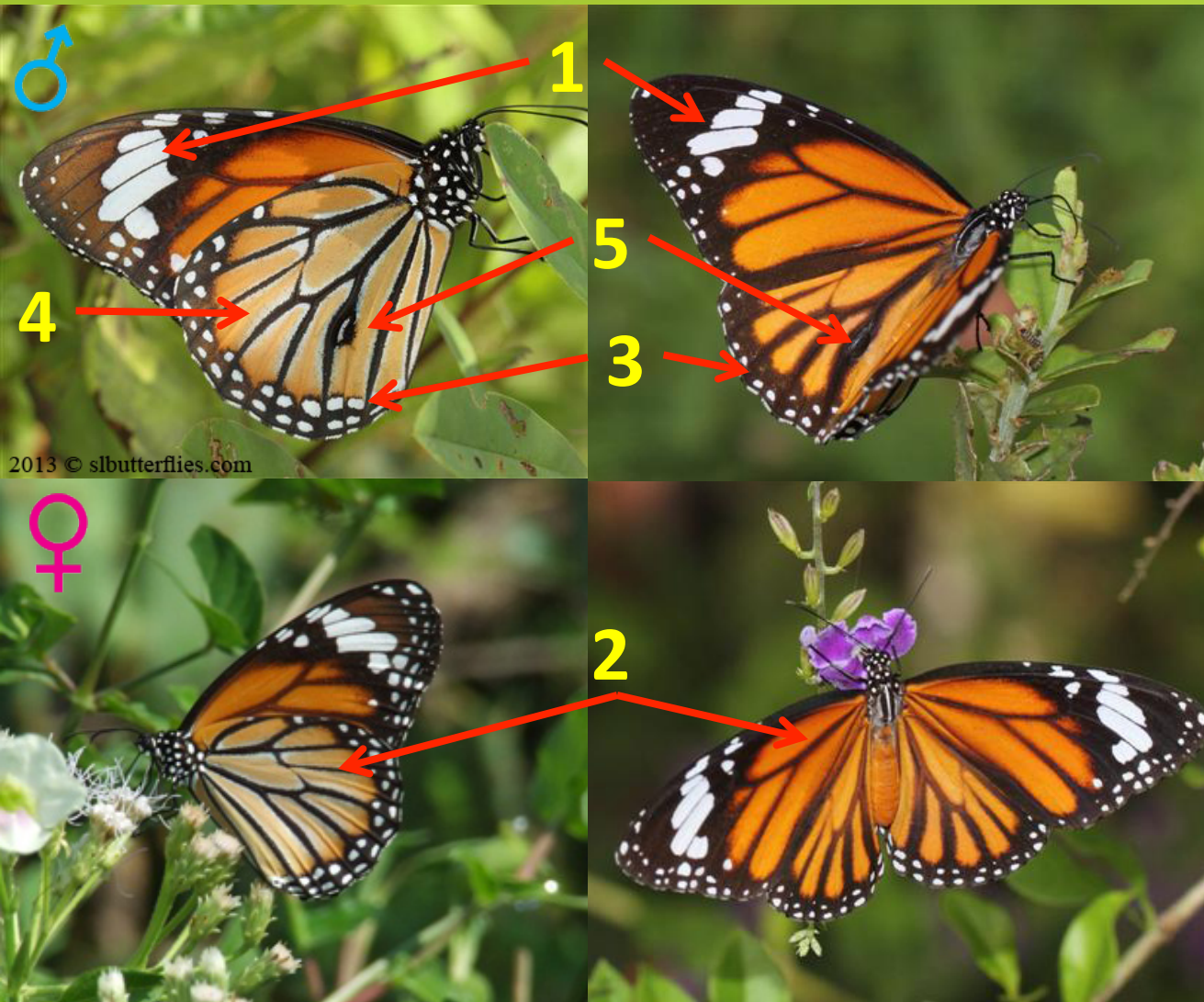
1. Apex is black with white patches.
2. Black spots on vein of the HW cell.
3. Single row of white marginal spots.
4. Male has sex brand.



there are two other forms,  
\* one form is lacking black apex and its white apical markings.

\*\* other form is having white patch on hind wing upper side.

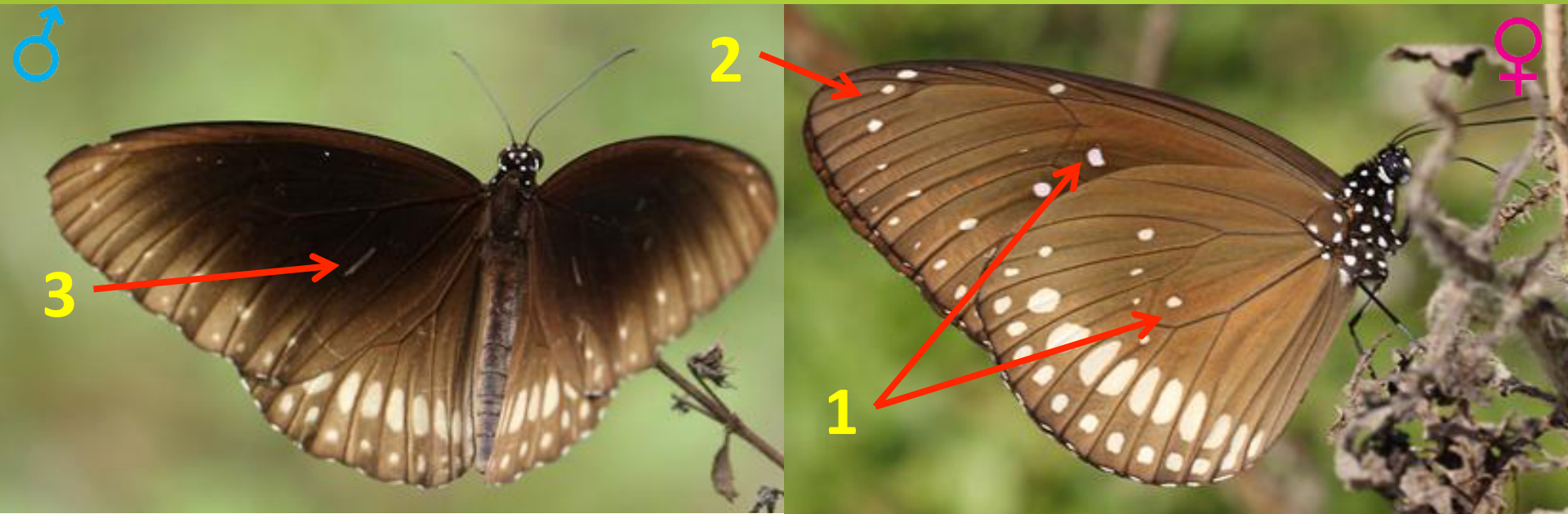
## 08, Common Tiger (*Danaus genutia*)



1. Apex is black with white patches.
2. Veins are broadly marked in black on both side.
3. Two rows of white marginal spots.
4. Orange colored patches are outlined in white scales on underside.
5. Male has sex brand.



## 09, Common Crow (*Euploea core*)



1. Each cell has a white spot on underside.
2. Fore-wing apex has a curved line of white spots on underside.
3. Male has a single streaky sex brand on fore wing upper side and a paler marking on under side corresponding to the brand.

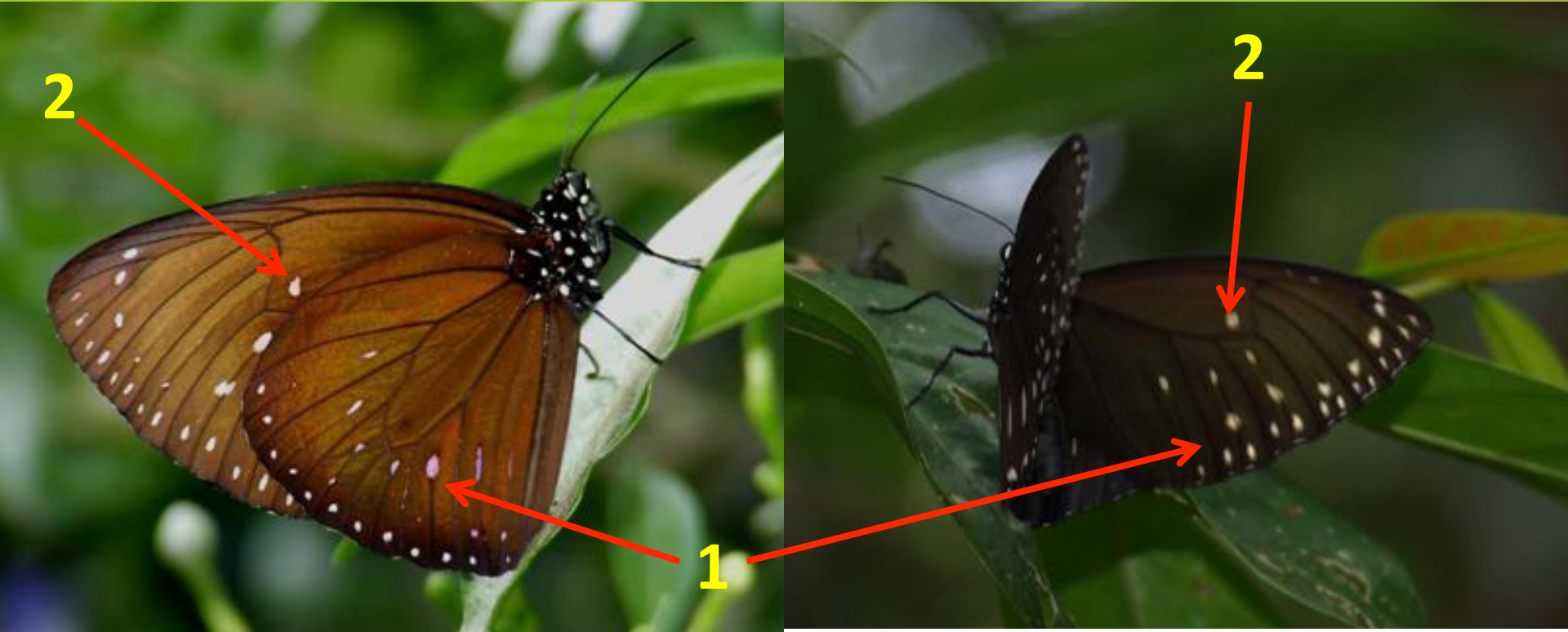


## 10, Double Branded Crow (*Euploea sylvester*)



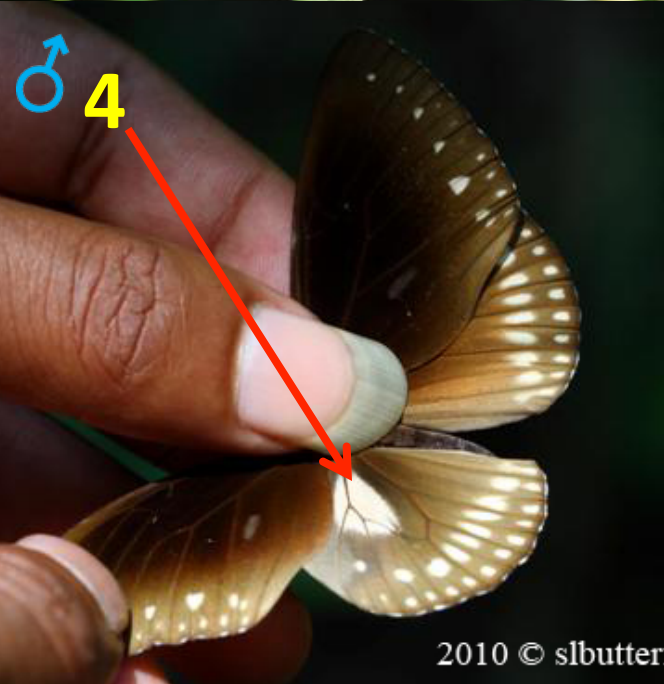
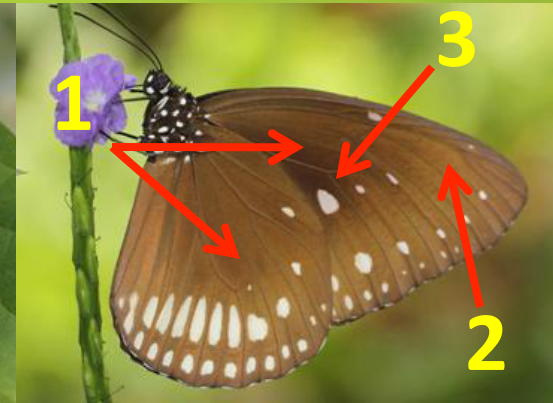
1. Each cell has a white spot on underside.
2. Fore-wing apex has NO curved line of white spots on underside.
3. Spots on inter-space 6 and 7.
4. Male has a double streaky sex brand on fore wing upper side and a paler marking on under side corresponding to the brand.

# 11, King Crow (*Euploea phaenareta*)



- Dark-brown in color
  - White patches may have purplish tinge.
  - Larger than other crows.
1. Small white patches on hind wing
  2. Spot in the forewing cell, no spot on hind wing cell.

## 12, Brown King Crow (*Euploea klugii*)



1. No spots on cells underside
2. No Spots on inter-space 6 and 7.
3. Male has a oval shaped sex brand on fore wing upper side and a paler marking on under side corresponding to the brand.
4. Male has a pale brown area on HW base.

2010 © slbutterf



## 13, Angled Castor (*Ariadne ariadne*)



## 14, Common Castor (*Ariadne merione*)



- Both species have front projected antenna .

1. Parallel darks line not paired.
2. FW outer margin more irregular.

1. Parallel dark line paired.
2. FW outer margin irregular.
3. Distal pair of bands form encircled markings.



# Thank You!

