

Butterflies Identification – Part VII

by Himesh Dilruwan Jayasinghe.

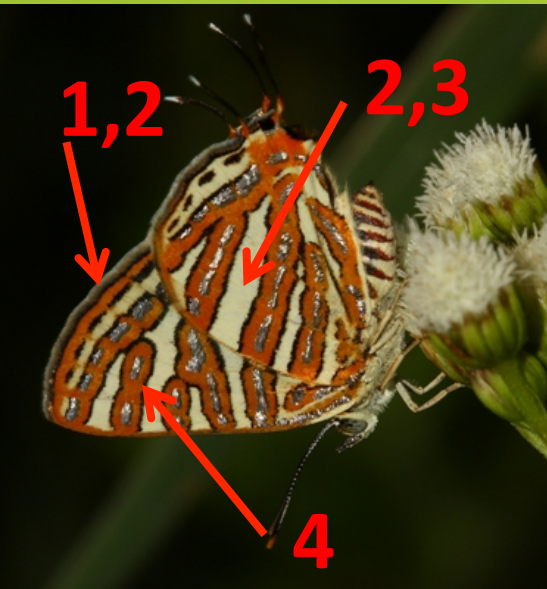
40, Long-banded Silverline (*Spindasis lohita*)



1. Continued outer marginal band
2. Dark maroon streaks on under side
3. Band 4 and 5 of FW underside touches each other to form a "Y"
4. **Male** - Dark Blue color on both wings on upper side
5. **Female** – Brown on upper side



41, Common Silverline (*Spindasis vulcanus*)



Typical



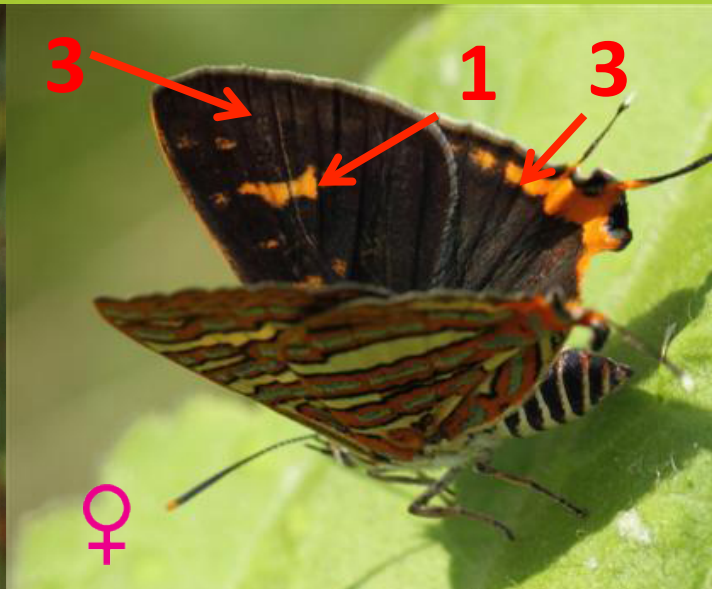
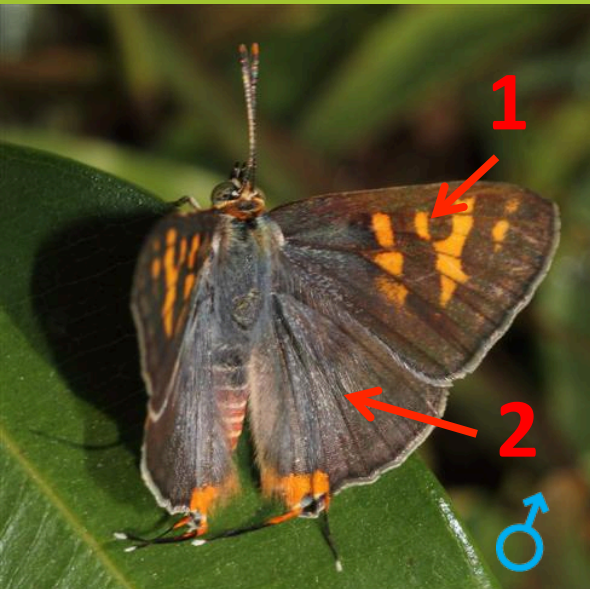
Variation



Variation

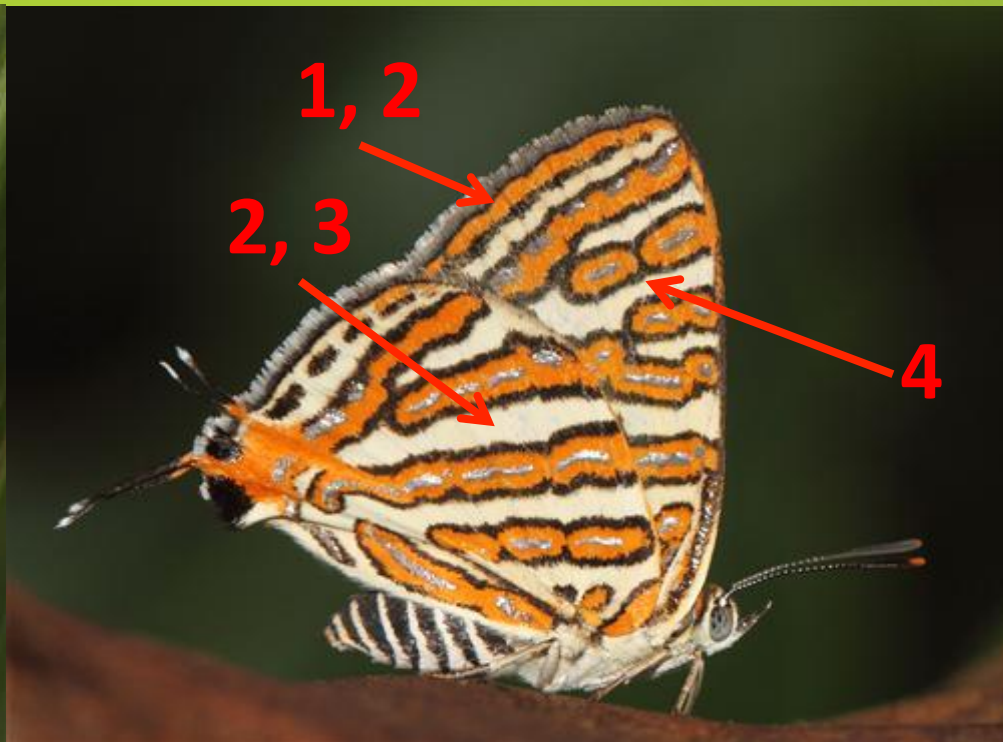
1. Continued outer marginal band.
2. Orange colored bands, pale yellow back ground.
3. Larger gap between Bands 2 and 3 on HW, leaving a broad yellow area (regularly, but not always)
4. Orange band is not divided by black outer line in 4th band on FW (regularly, but not always)

41, Common Silverline (*Spindasis vulcanus*) cont...



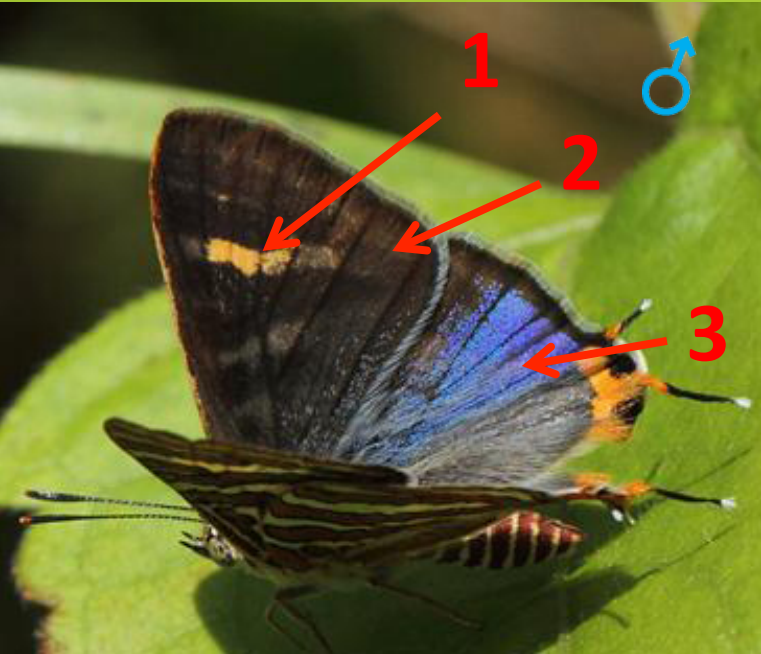
1. Both sexes have variable orange streaks.
2. **Male** – never has shiny blue, but few grey-blue hairs and scales, reddish brown background.
3. **Female** – completely dark brown, tornal patch usually extending.

42, Plumbeous Silverline (*Spindasis schistacea*)

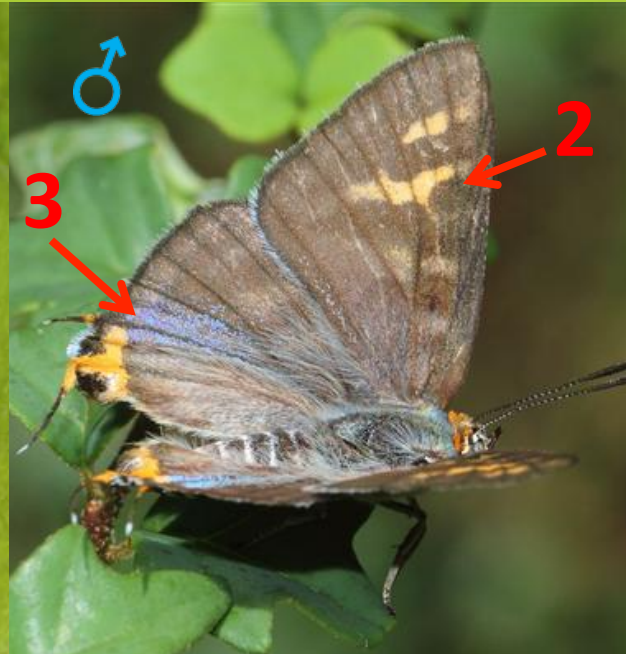


1. Continued outer marginal band
2. Orange colored bands, pale yellow back ground
3. No larger gap between Bands 2 and 3 on HW (regularly, but not always)
4. Orange band is divided by black outer line in 4th band on FW (regularly, but not always)

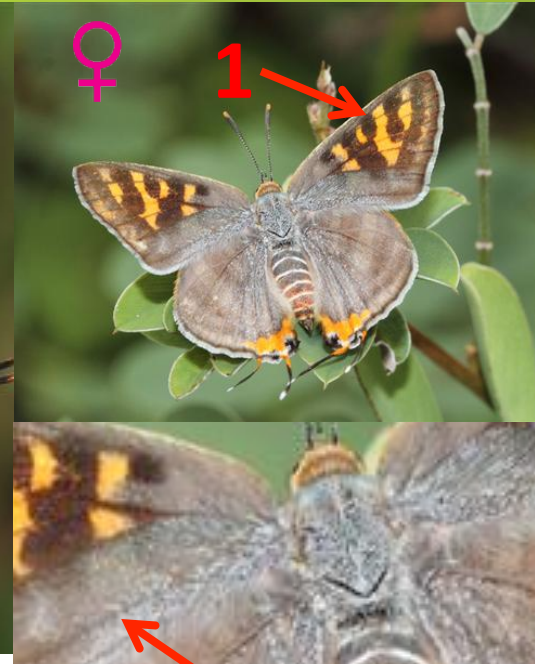
42, Plumbeous Silverline (*Spindasis schistacea*) cont...



WSF



DSF



1. Both sexes have variable orange streaks
2. **Male** – dark brown in WSF, paler in DSF
3. **Male** – Shiny blue on HW, much reduced in DSF
4. **Female** – brown, with few grey-blue hairs and more scales

43, Common Shot / Ceylon Silverline (*Spindasis ictis*)



WSF



DSF

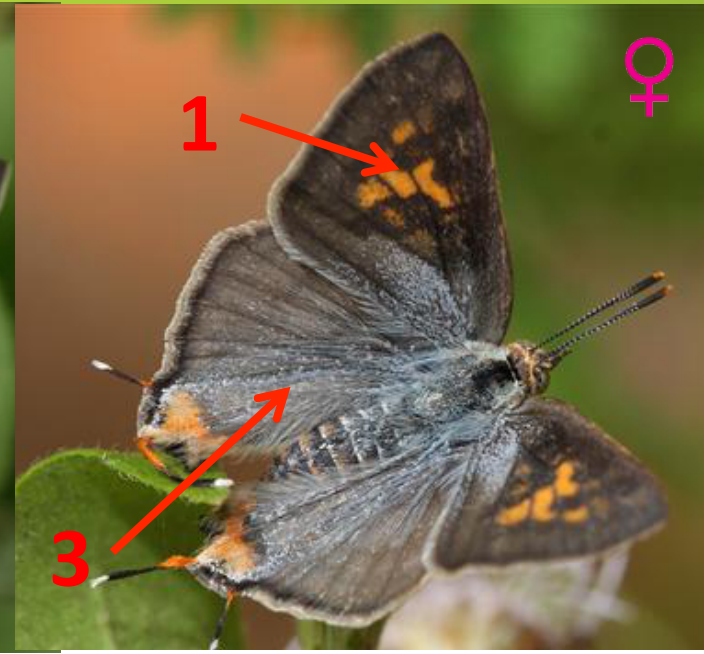
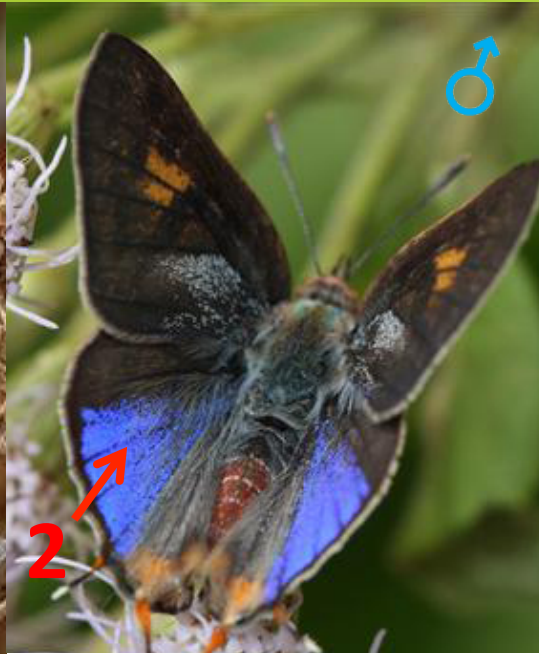
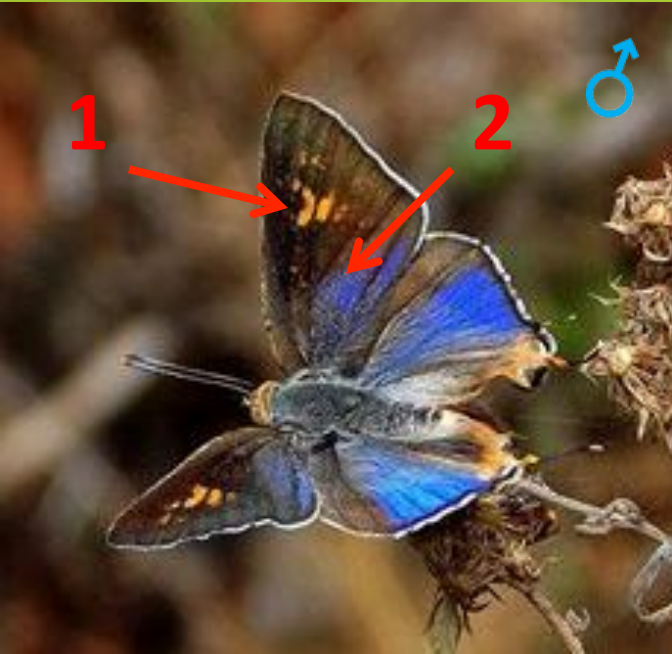


DSF

© Sachindra Umesh

1. No red band on outer margin.
2. Background color highly varies, but never yellow.
3. Band color distinctly different from the back ground in WSF, but merges in DSF.

43, Common Shot / Ceylon Silverline (*Spindasis ictis*) cont...



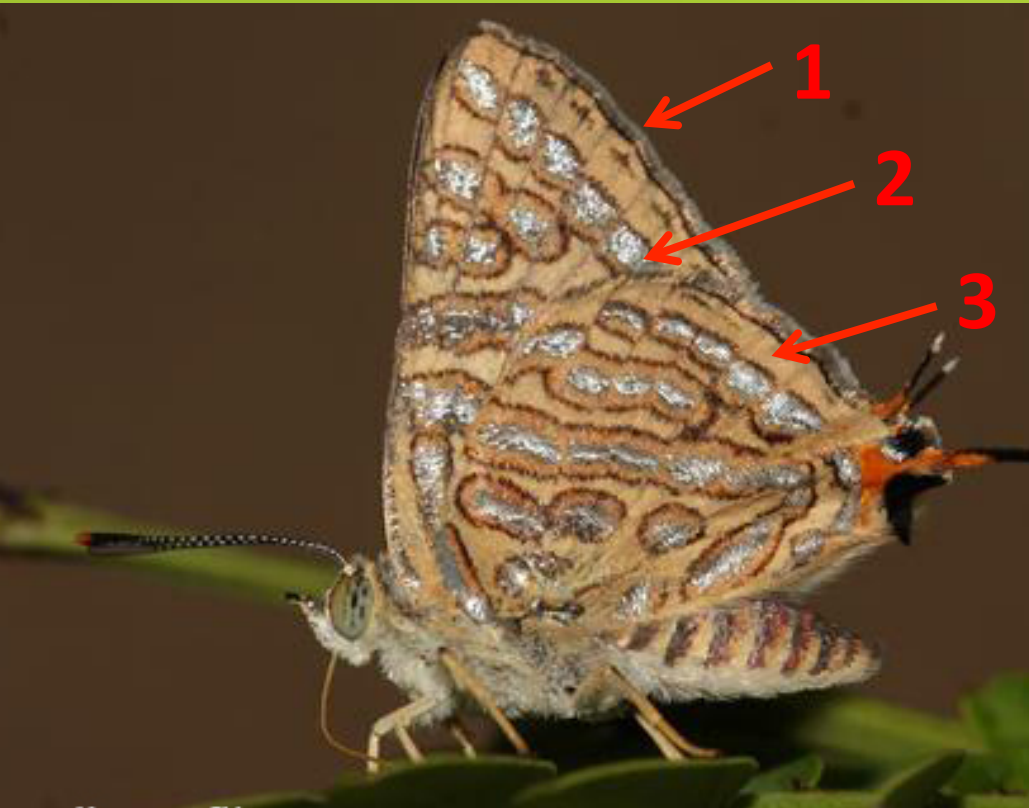
© Sachindra Umesh

DSF

VSF

1. Both sexes have variable orange patches on FW
2. **Male** – Shiny blue on hw, extended in to FW in DSF
3. **Female** – Brown wings overlaid by grey-blue scales and hairs

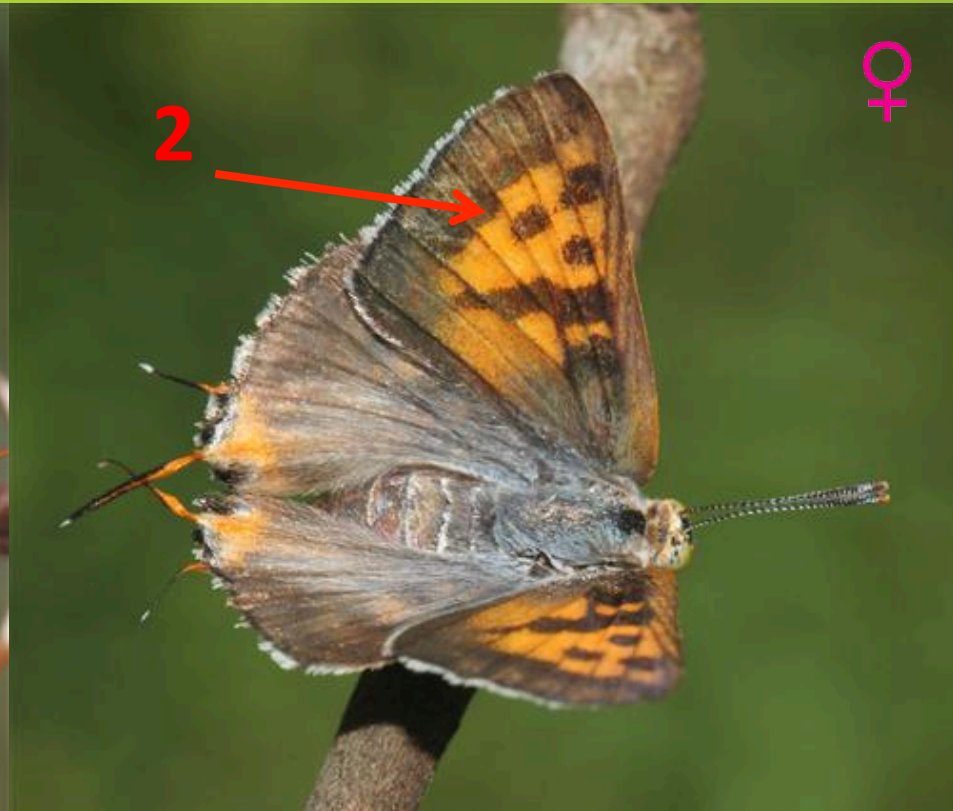
44, Scarce Shot Silverline (*Spindasis elima*)



1. No red band on outer margin
2. Enlarged & embossed silver patches
3. Reddish brown background, but no dispersed red scales
4. WSF is much lighter, with distinct bands

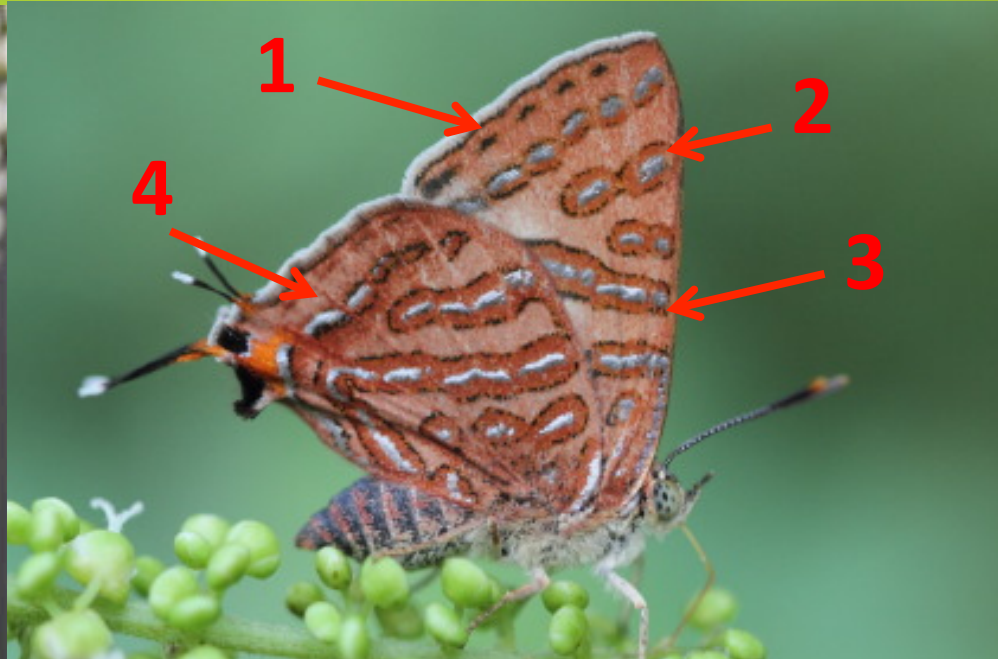
WSF

44, Scarce Shot Silverline (*Spindasis elima*) cont...



1. **Male** – Shiny blue extended up to FW cell, no orange patches on FW.
2. **Female** – Enlarged orange patches on FW, dull brown back ground.

45, Clouded Silverline (*Spindasis nubilis*) (E)



© Michael van der Poorten

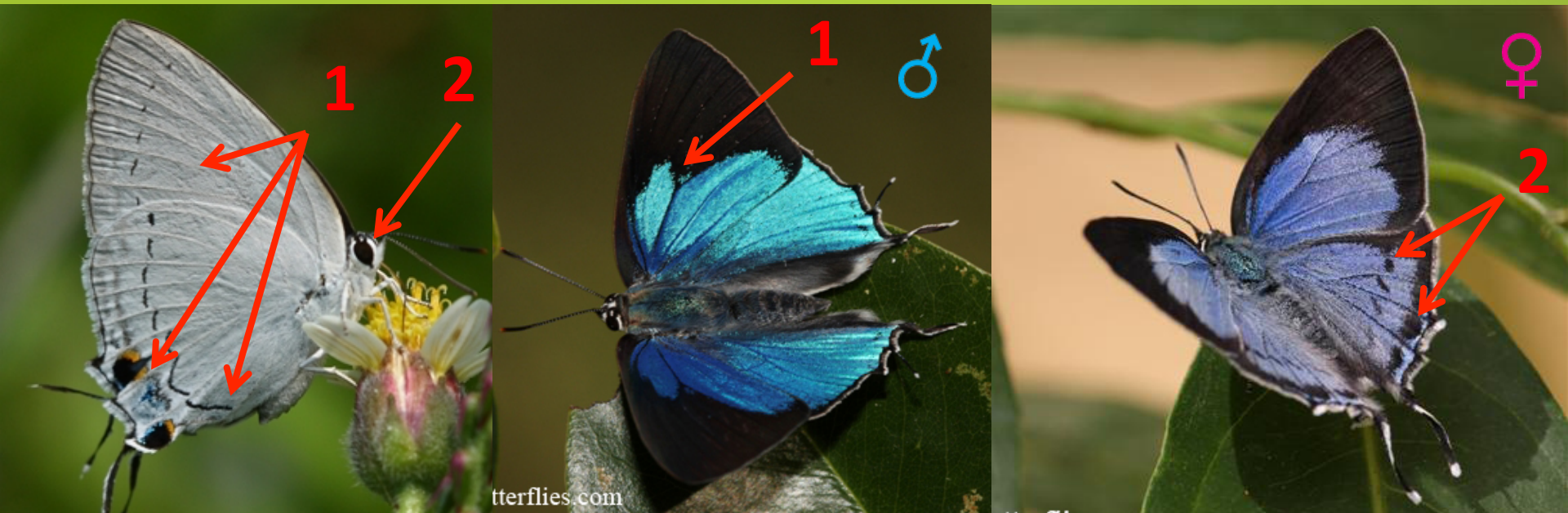
1. No red band on outer margin
2. Slightly enlarged silver patches
3. Brick red colored bands
4. Back ground appear as reddish due to sporadic red scales

46, Green's Silverline (*Spindasis greeni*) (E)



1. Rosy brown under side with narrow, discontinuing bands.
2. **Male** – Dark shiny blue on upper side with dark margins on FW.
3. **Female** – Pale shiny blue on upper side with dark margins on FW.

47, Peacock Royal (*Tajuria cippus*)

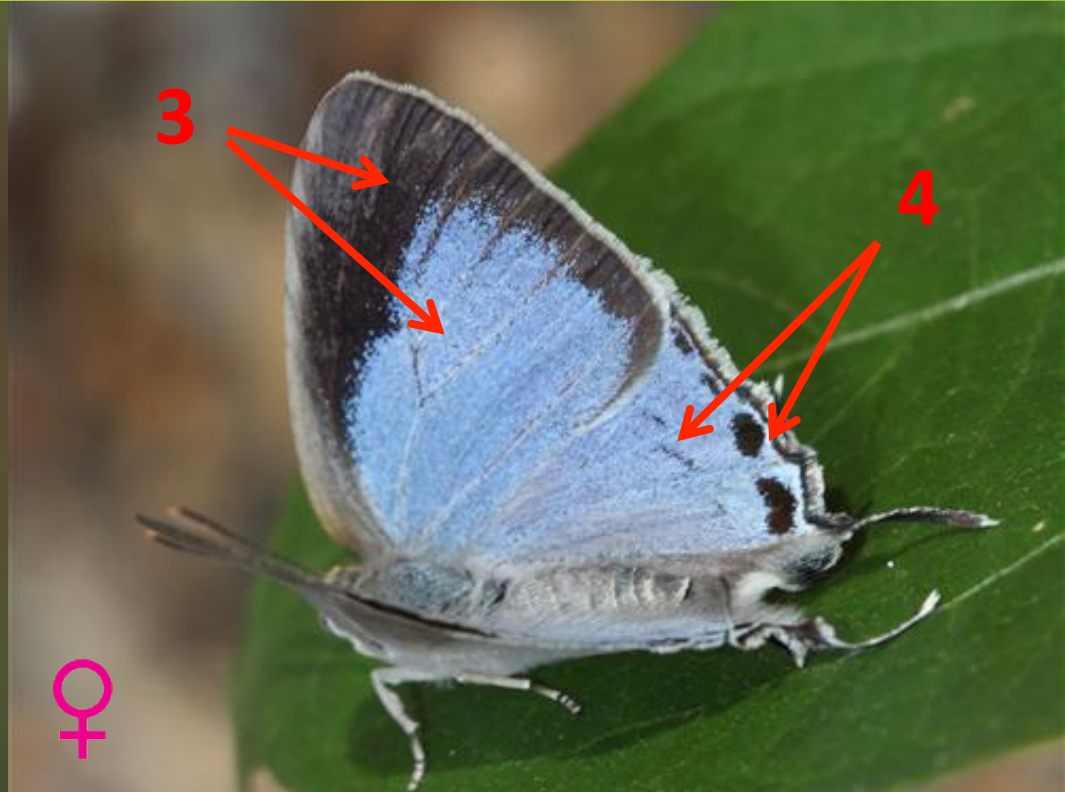
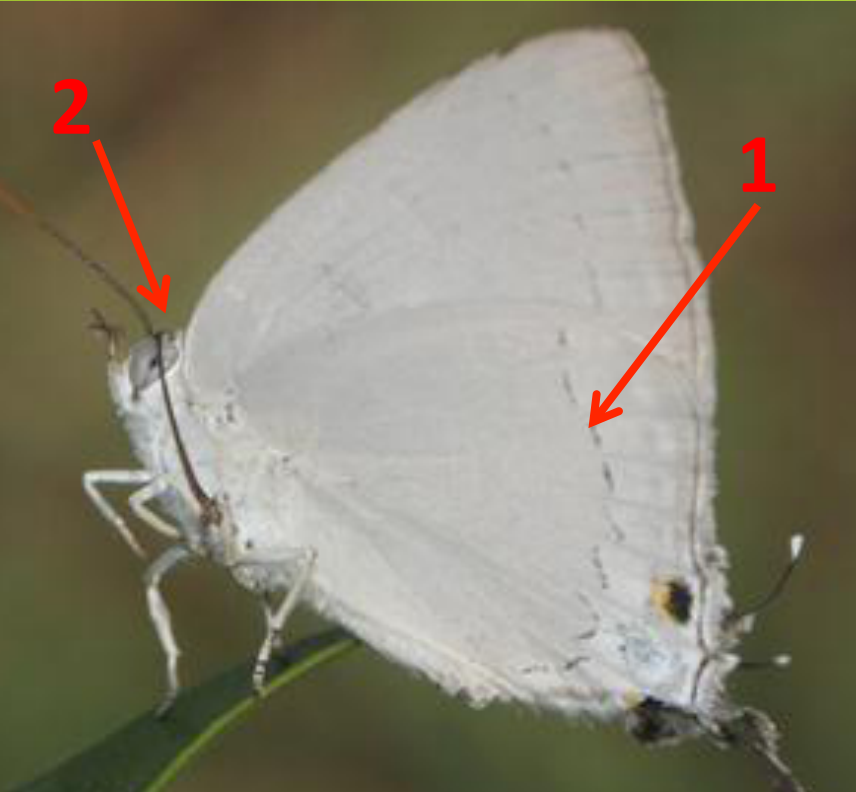


1. White under side with a tornal spot, anal angle spot and a distal band of black streaks
2. Black eyes.

Upper side

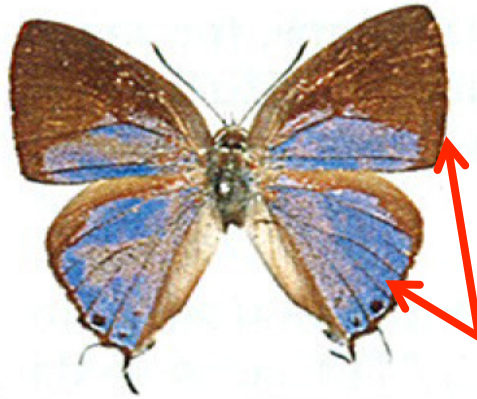
1. **Male** – no sex brand, irregular outer boundary of the blue patch on FW
2. **Female** – black patches on inner margin, black streaks on discal of HW

48, Plains Blue Royal (*Tajuria jehana*)



1. Black markings on under side usually thin.
2. Grey colored eyes.
3. **Female** – Uniform sky blue on upper side with black margins on FW.
4. **Female** – Black patches on inner margin and black streaks on discal of HW.
5. **Male** – Similar to female but with slightly brighter blue & no discal streaks.

49, Sri Lanka Indigo Royal (*Tajuria arida*) (E)



1



- Very much similar to Plains Blue Royal in color pattern.
- Eye color is not known

1. But outer margins are much rounded

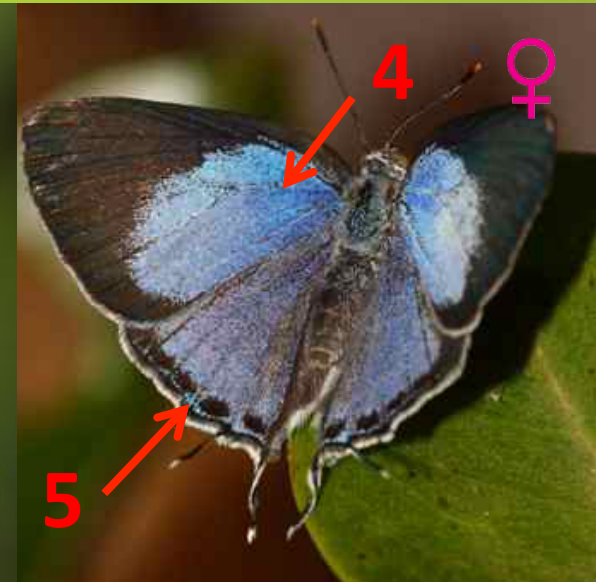
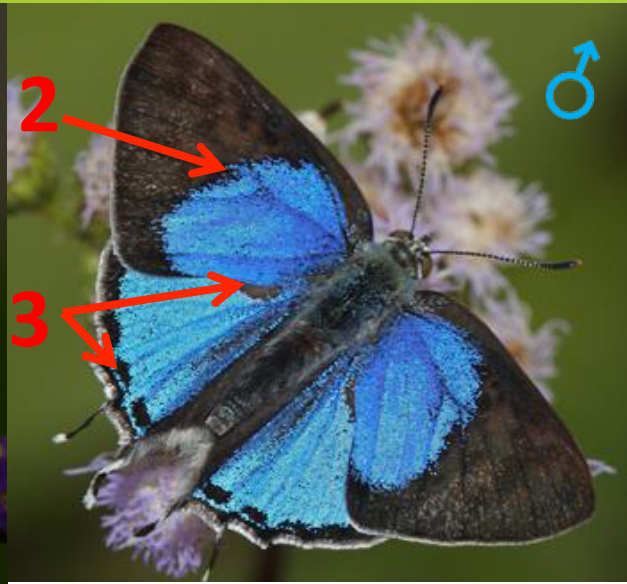
T. arida ♂ R

T. arida ♀ R



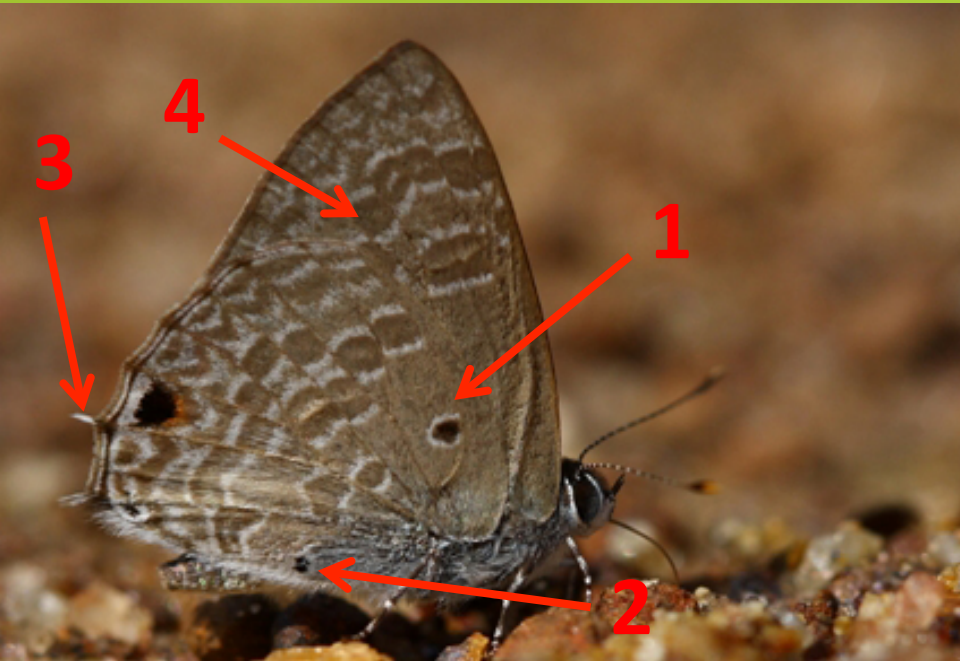
T. arida ♀ V

50, White Royal (*Pratapa deva*)



1. Under side similar to Peacock Royal, but grey eyes.
2. **Male** – Regular outer boundary of the bright blue patch on FW.
3. **Male** – Black patches on inner margin, large black sex brand on upper margin on HW.
4. **Female** – Lighter blue darkens towards the base.
5. **Female** – Black patches on inner margin, no streaks on discal of HW.

51, Ponted Ciliate Blue (*Anthene lycaenina*)

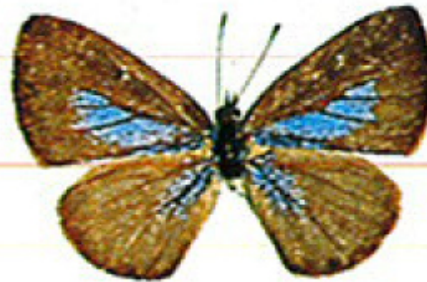


1. Black spot surrounded by white line above FW cell on HW.
2. Black spot near anal margin.
3. Cilia extended in to erect, minute tails at the tornus & anal angle.
4. Dispersed pairs of white lines distally on both wings.
5. **Male** – Completely dark, navy blue on upper side.
6. **Female** – Brown with blue basal parts.

52, Dingy Lineblue (*Petrelaea dana*)



P. dana ♂ R

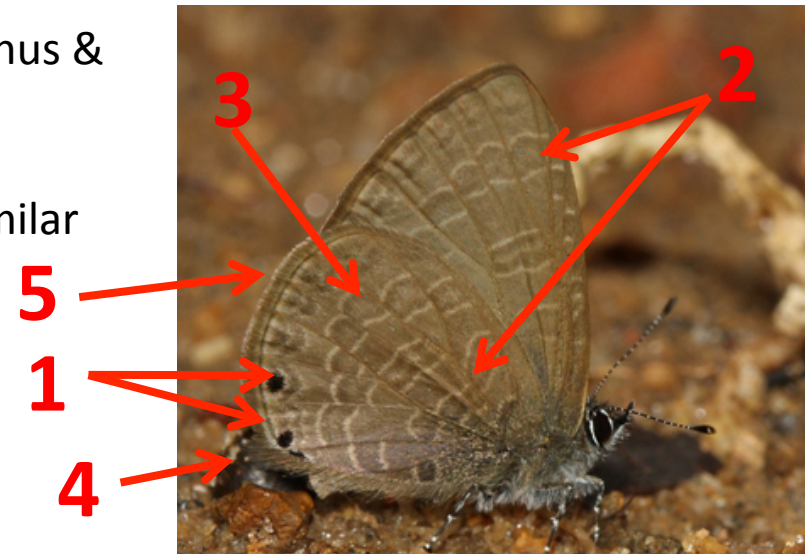


P. dana ♀ R

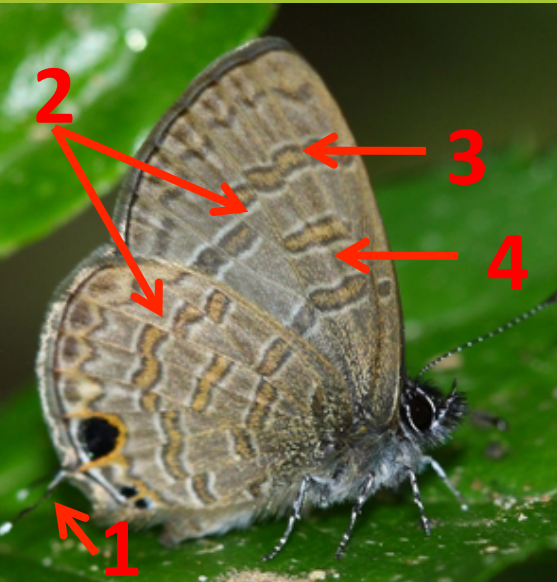


P. dana ♀ V

1. Two Black spots (not capped in orange) at the tornus & anal angle.
2. 3 pairs of thin white streaks on both wings.
3. Back ground color within the white streaks are similar to outside.
4. No tornal tail.
5. Rounded outer margin.
6. **Male** – Completely blue on upper side.
7. **Female** – Brown with blue basal parts.



53, Common Lineblue (*Prosotas nora*)



1. Tornal tail.
2. 3 pairs of white streaks on both wings.
3. Back ground color between white streaks is different from the outside.
4. White streaks pairs are distinctly separated.
5. Background color vary from yellowish brown to grey-brown.
6. **Male** – Dull blue through out the upper side
7. **Female** – Brown with grey scales at bases

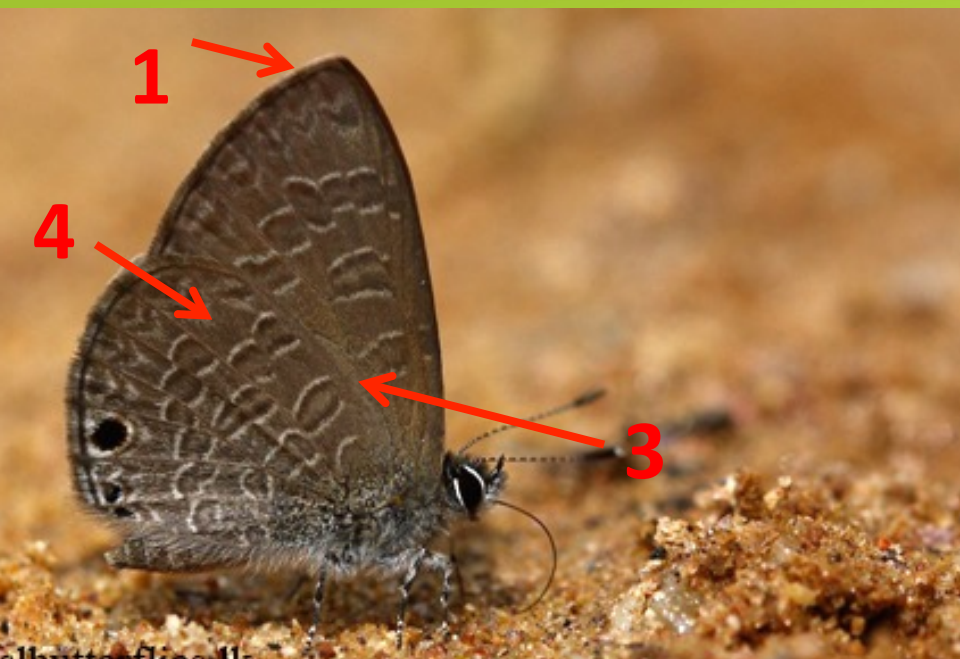


54, Tailless Lineblue (*Prosotas dubiosa*)



- Usually smaller in size than Common LB.
1. No tail.
 2. Back ground color between the white streaks is slightly different from the outside.
 3. Pairs of white streaks are more congested on HW.
 4. Back ground color fairly constant, No yellow forms occur.
 5. **Male** – Dull purplish blue on upper side.
 6. **Female** – Brown with purplish blue scales basally.

55, White-tipped Lineblue (*Prosotas dubiosa*) (E)



1. Clilia at the apex of FW is white, but can't distinguish in old individuals
2. No tornal tail
3. Basal pair of white streaks are not extend below the cell of FW
4. Distal pair of white streaks not continued up to upper margin on HW
5. Lower part of HW is dusted with white scales
6. Tornal spot and two triangular, small spots at anal angle not capped in orange
7. Female – Brown on upper side with purplish blue scales basally
8. Male – Purplish blue on upper side

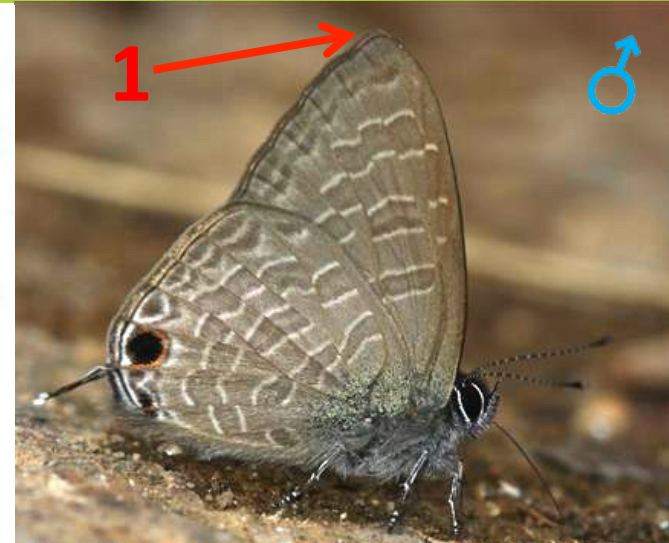
56, Pointed Lineblue (*Ionolyce helicon*)



5
I. helicon viola ♂ R



6
I. helicon viola ♀ R

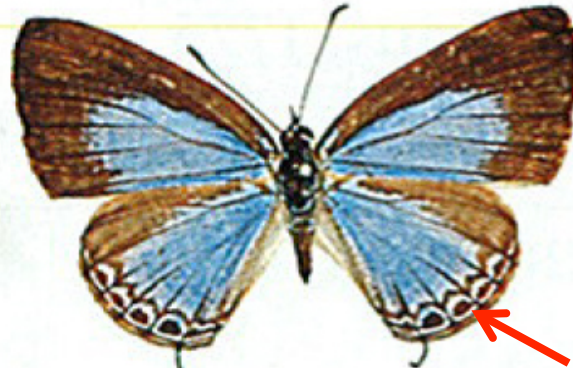


1. Apex of the FW is pointed.
2. Larger in size than other Line blues.
3. Tornal tail.
4. Back ground color between white streaks is not different from the outside.
5. **Male** – Shiny purple through out on upper side with indistinct tornal spot.
6. **Female** – Brown with shiny blue scales basally. Black patches along the outer margin.

57, Dark Cerulean (*Jamides bochus*)



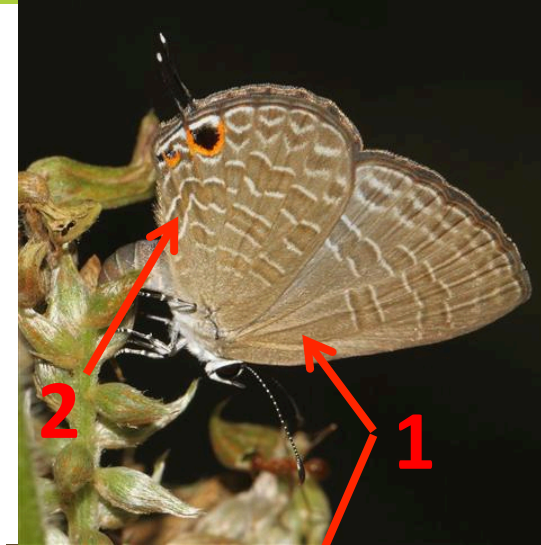
J. bochus ♂ R



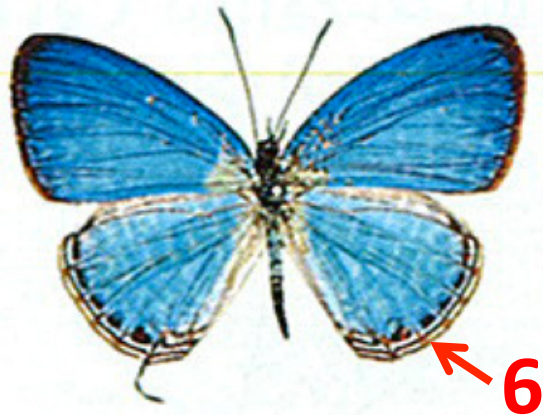
J. bochus ♀ R

5

1. Dark brown back ground, indistinct white streaks.
2. Deep “V” marking on HW.
3. **Male** – Dark shiny blue on upper side with black margins on FW.
4. **Female** – Blue is lighter in color and reduced in area
5. **Female** – Lunular markings along outer margin



58, Sri Lankan Cerulean (*Jamides bochus*) (E)



J. coruscans ♂ R



J. coruscans ♀ R



1. Distinct white markings on under side.
2. Lighter brown background color than Dark C.
3. Sharp lunular markings on outer margin of both wings.
4. Shallow "V" on HW.
5. **Male** – Shiny light blue through out the upper side.
6. **Male** – small black markings on the outer margin of HW.
7. **Female** – Light grey-blue upper side with dark margins on FW.
8. **Female** – Lunular markings along outer margin of HW.

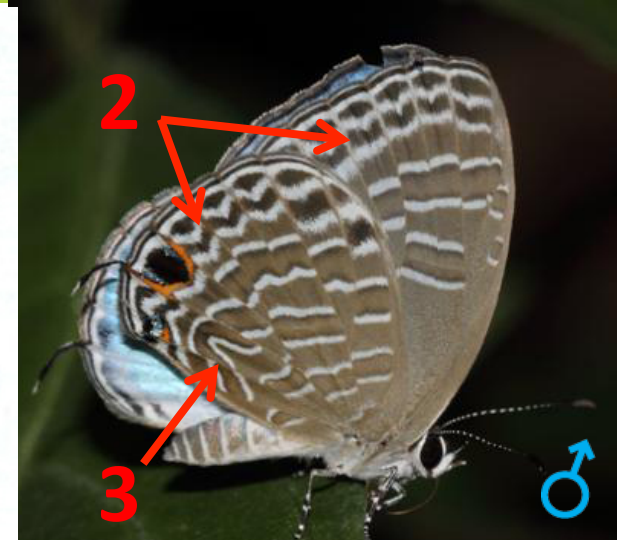
59, Milky Cerulean (*Jamides lacteata*) (E)



J. lacteata ♂ R

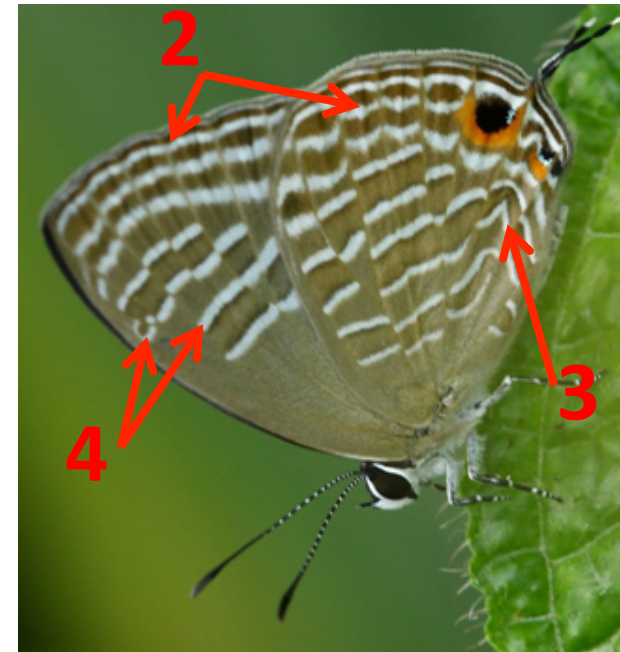
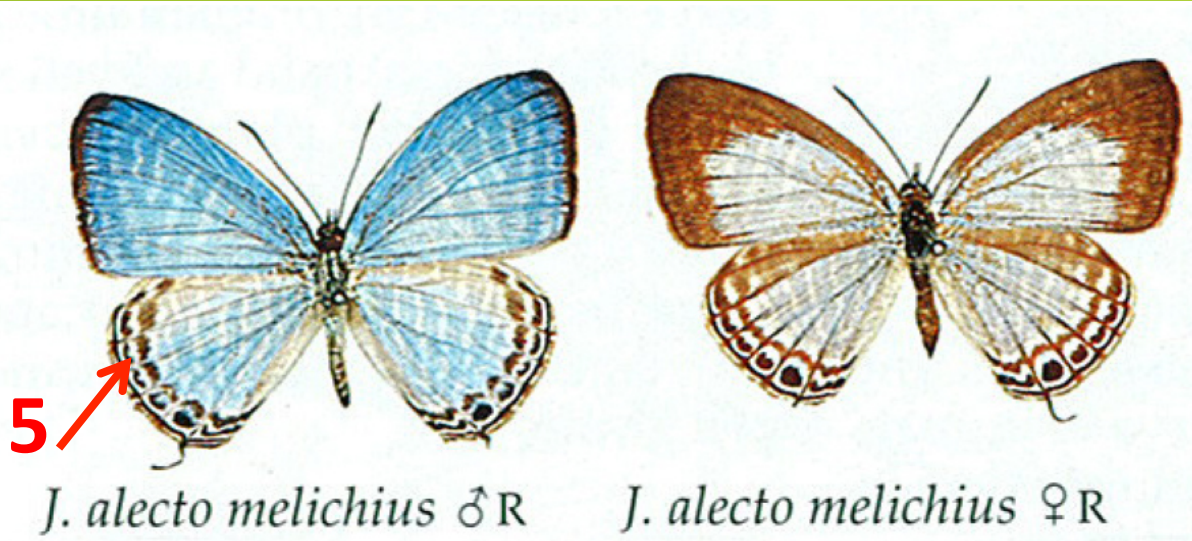


6 *J. lacteata* ♀ R



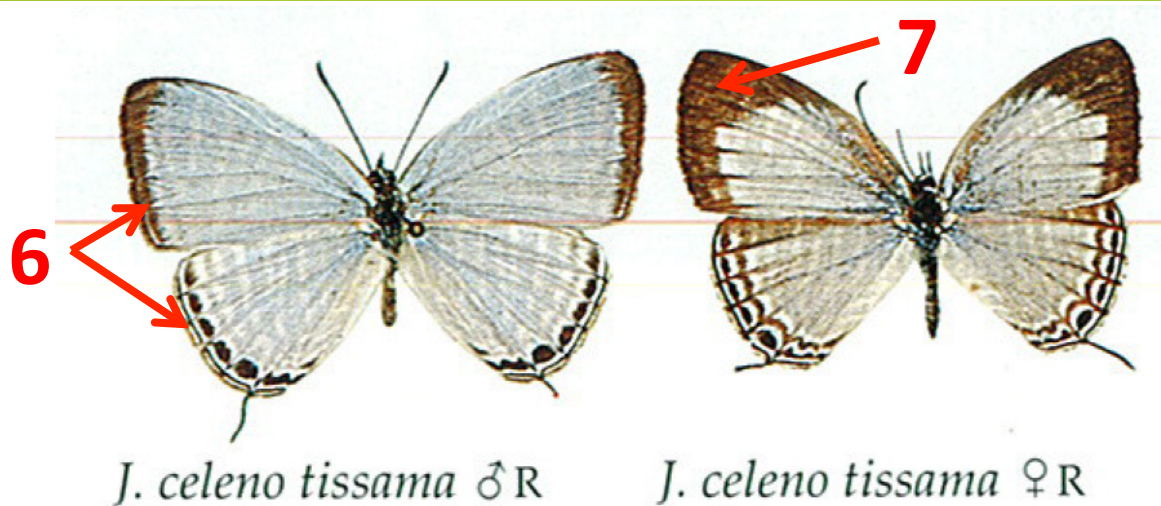
1. Larger than Dark C. & SL C.
2. Sharp Lunules on HW & shallow lunels on FW outer margin.
3. Sharp "V" on HW.
4. Male – Light shiny blue on upper side (whole area) in a different shade than SL C.
5. Female – Grey-blue upper side with dark margins on FW.
6. Female – Lunular markings on HW outer margin.

60, Metallic Cerulean (*Jamides alecto*)



1. Slightly larger than Milky C.
2. Streaks on FW & shallow lunules on HW outer margin.
3. Shallow “V” on HW.
4. Parallel white lines on FW.
5. **Male** – Blue is quite similar to Milky C, but lunules on HW outer margin.
6. **Female** - similar to Milky C. in upper side.

61, Common Cerulean (*Jamides celeno*)



1. Very much vary in size, but most of them are larger than other species.
2. Streaks on outer margins of both wings.
3. Deep "V" on HW.
4. White bands on FW are not disjunctive.
5. **Male** – Grey – blue upper side is not shiny.
6. **Male** – Thin outer marginal band on FW, luneles on HW outer margin.
7. **Female** – reduced blue area than male.

