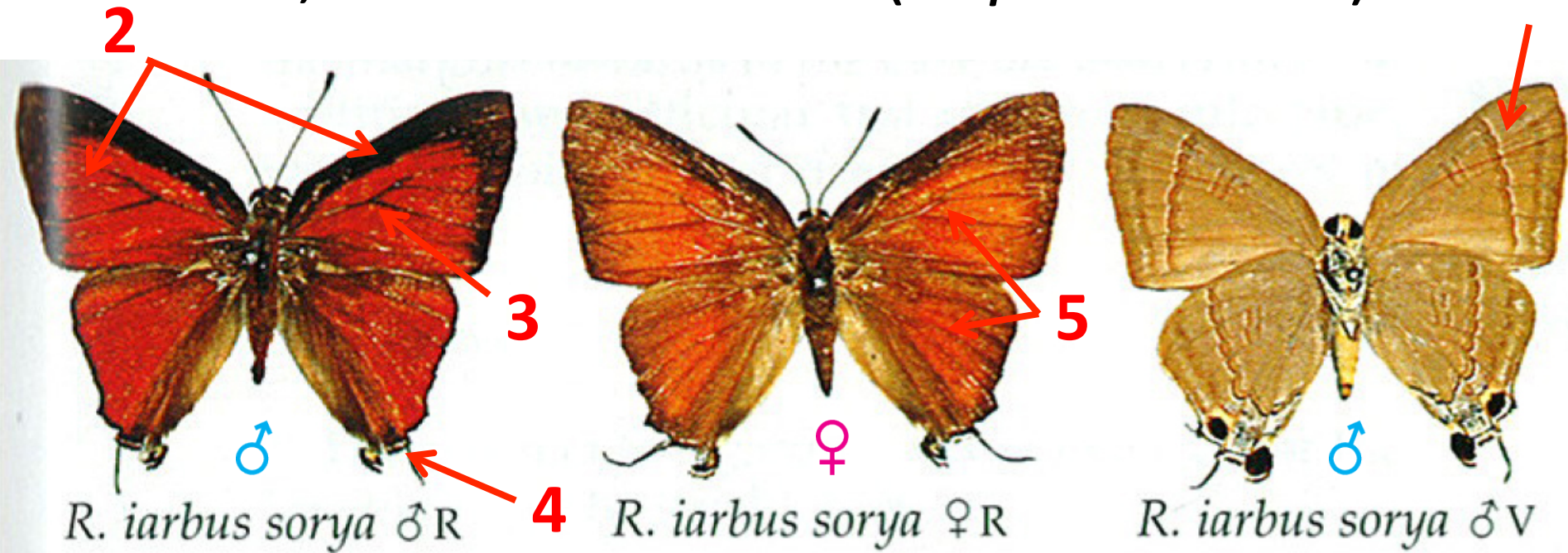


Butterflies Identification – Part VI

by Malinga Prabhasara.

23, Indian Red Flash (*Rapala iarbus*)



1. Underside is grayish with darker post-discal line, which outwardly whitened.

Male

2. Upperside is orange red with well defined apical borders.

3. Veins at the FW cell area brownish black.

4. Tonal lobe is prominent with black edge.

Female

5. Upperside is less orange red and veins are unmarked.

24, Slate Flash (*Rapala manea*)



1. Distal bands are more narrow and darker than the ground color.
2. Cell end band of HW doesn't touch the distal band.

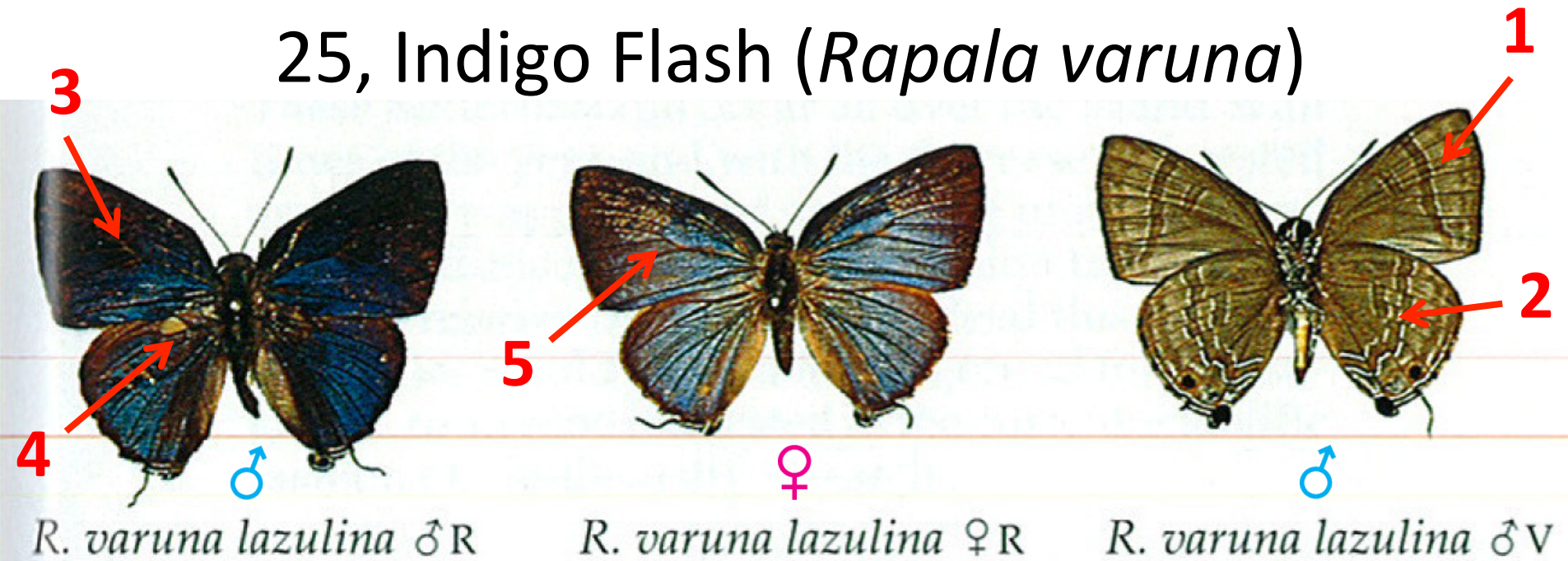
Male

3. Dark brown on the upperside.

Female

4. Less Brown on the upperside.

25, Indigo Flash (*Rapala varuna*)



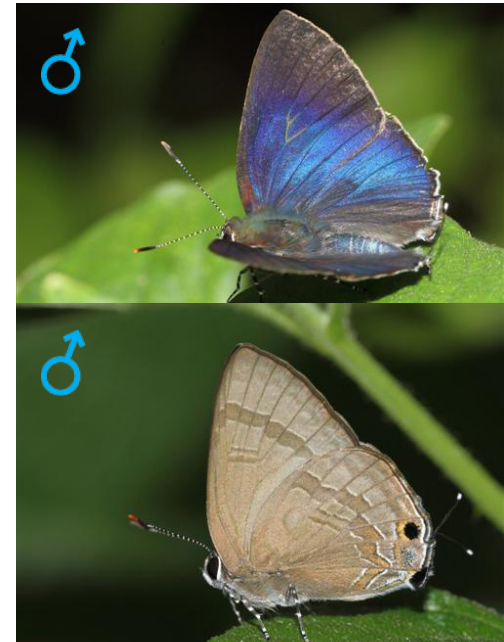
1. Distal bands are much broader than SF.
2. The Cell end patch usually touch the distal band.

Male

3. Upperside metallic blue fades in to black towards the FW margin.
4. Sex brand on HW concealed by the FW.

Female

5. Upperside lighter blue.

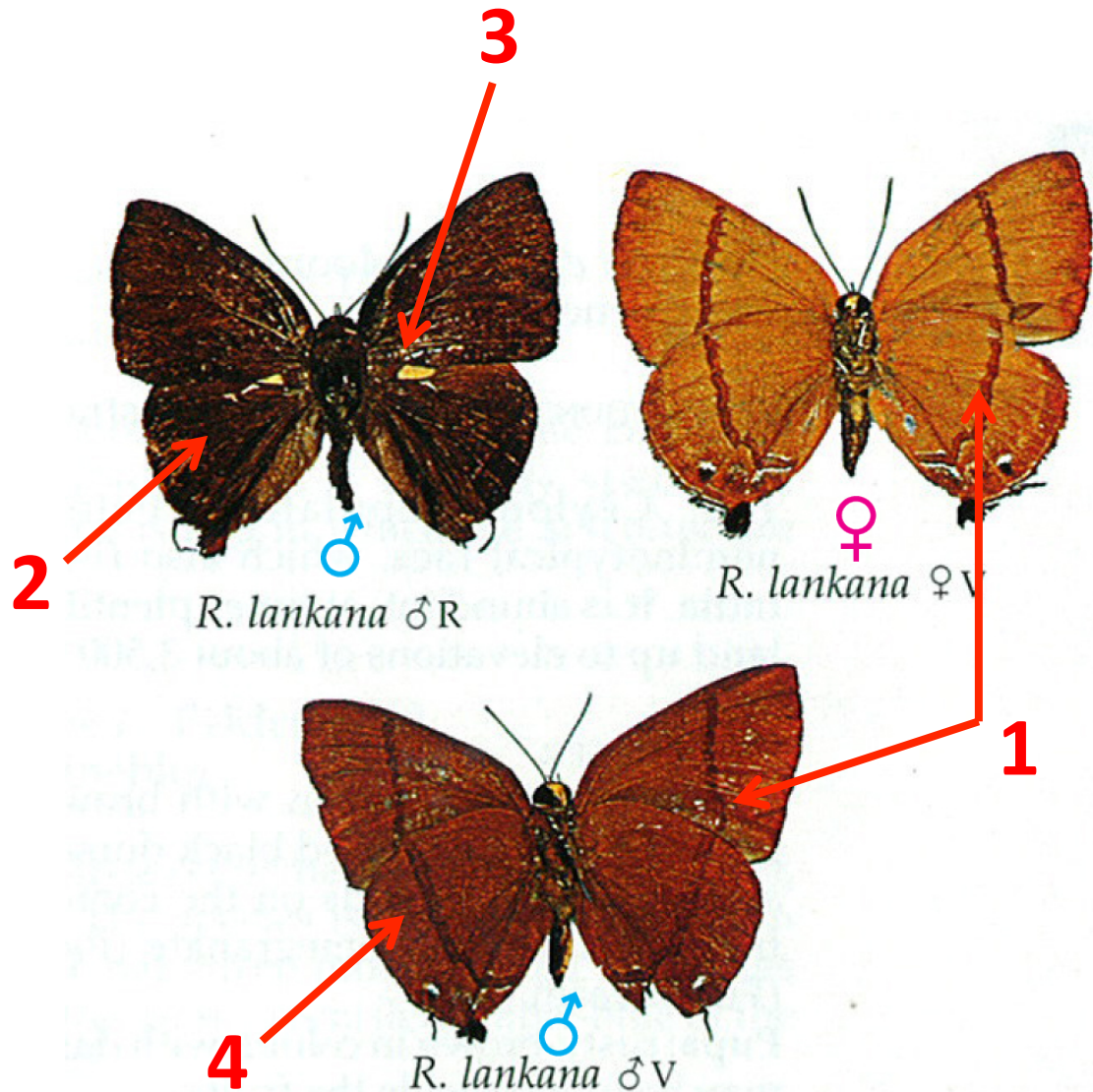


26, Malabar Flash (*Rapala lankana*)

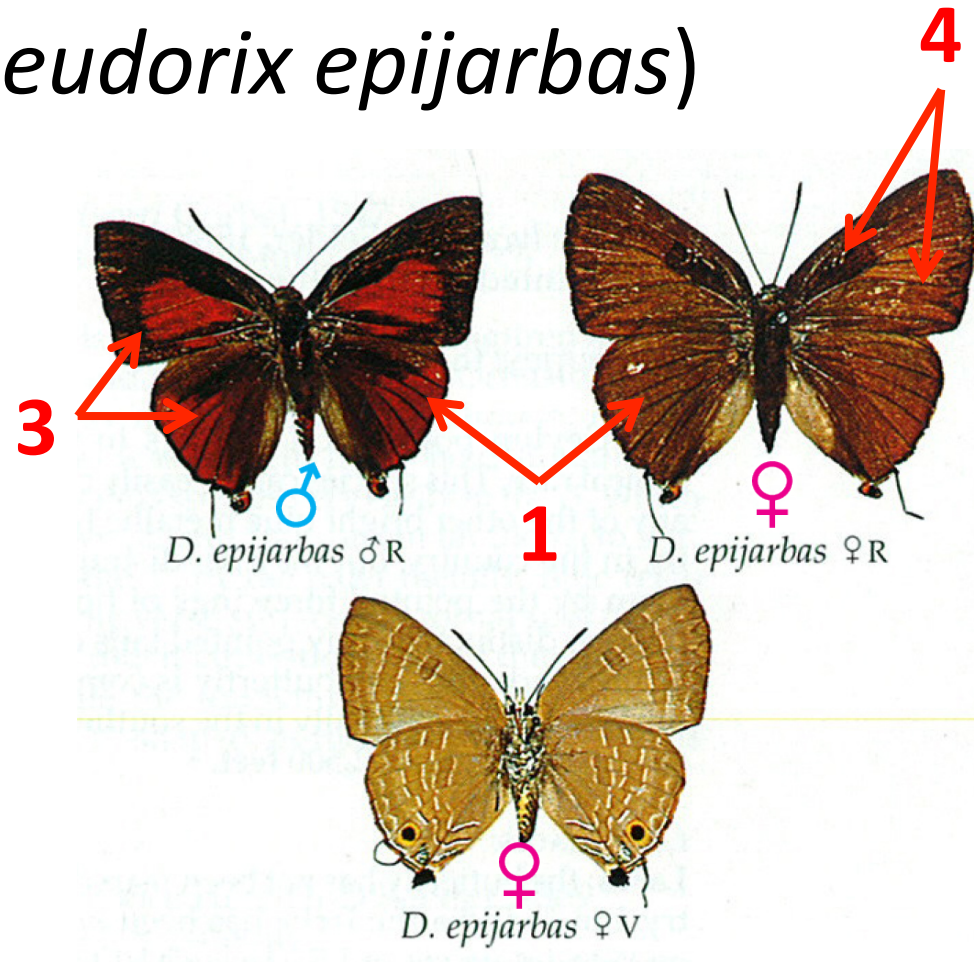
1. Underside prominent darker band across the both wings.

Male

2. Upperside dark purple brown.
3. Deep purple blue wash on the lower margin of FW and most of the HW.
4. Maroon background color on under side



27, Cornelian (*Deudorix epijarbas*)



1. HW veins are marked in black.
2. Distal band is very board, as same as the background color and marked in a white outline.

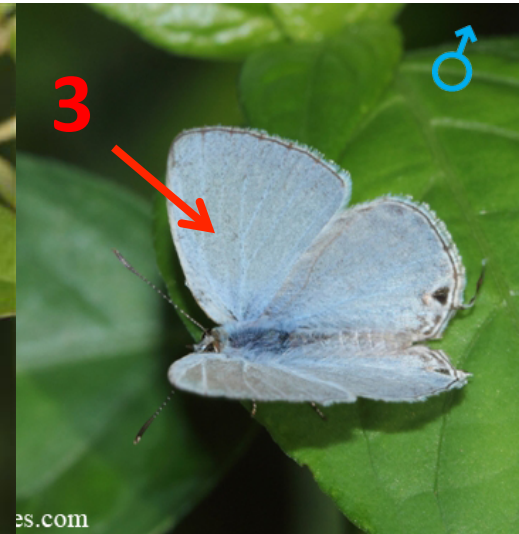
Male

3. HW Upperside and basal part of the FW are deep shiny red. Rest in black color.

Female

4. Upperside dark grayish brown exposed FW cells in much daker.

28, Silver Forget-me-not (*Catochrysops panormus*)



1. Black spot near the upper margin of FW situated at close to distal band upperend.
2. Distal band boarder than forget-me-not.

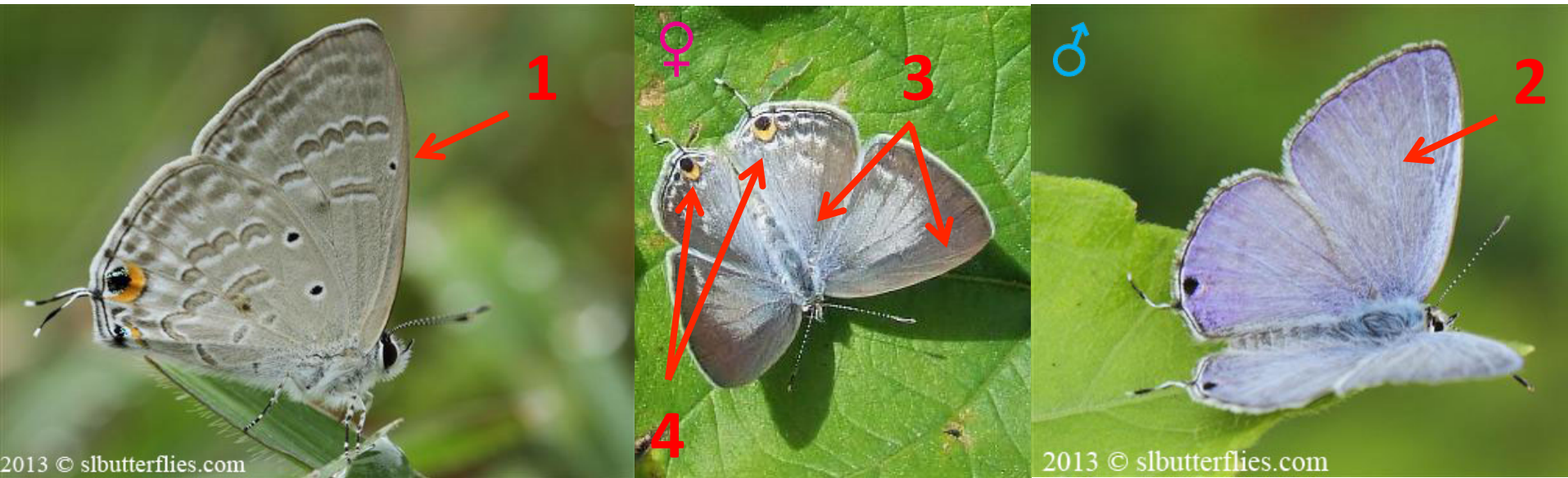
Male

3. Upperside coloured in pale-blue and has black tonal spot.

Female

4. Upperside heavily black-dusted with board apical area.

29, Forget-me-not (*Catochrysops strabo*)



1. Black spot near the upper margin of FW roughly situated at center of distal band and the cell end band.

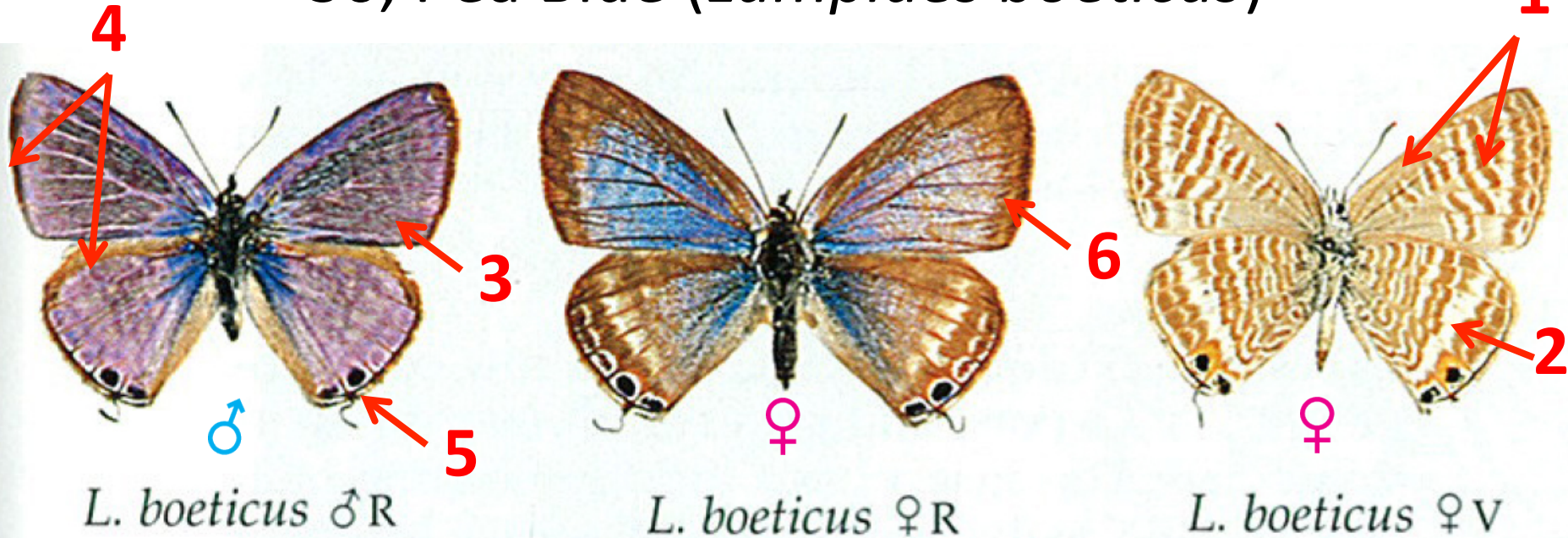
Male

2. Upperside coloured in Forget-me-not blue and has black tonal spot.

Female

3. Uppeside basal parts are dull greyish blue and borders are dark brown.
4. Tonal spot capped in orange and row of cresecent-shaped markings on the HW

30, Pea Blue (*Lampides boeticus*)



1. Underside light brown and paired bands of thin white streaks.
2. HW underside has white distal band.

Male

3. Upperside purplish blue, veins of the FW are marked with light color.
4. Outer margin narrowly bordered in dark brown.
5. Two black tonal spots.

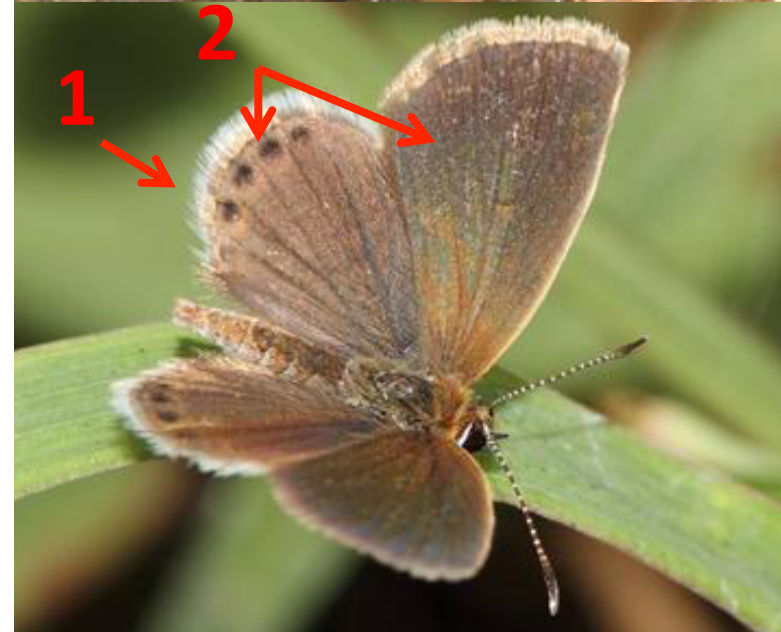
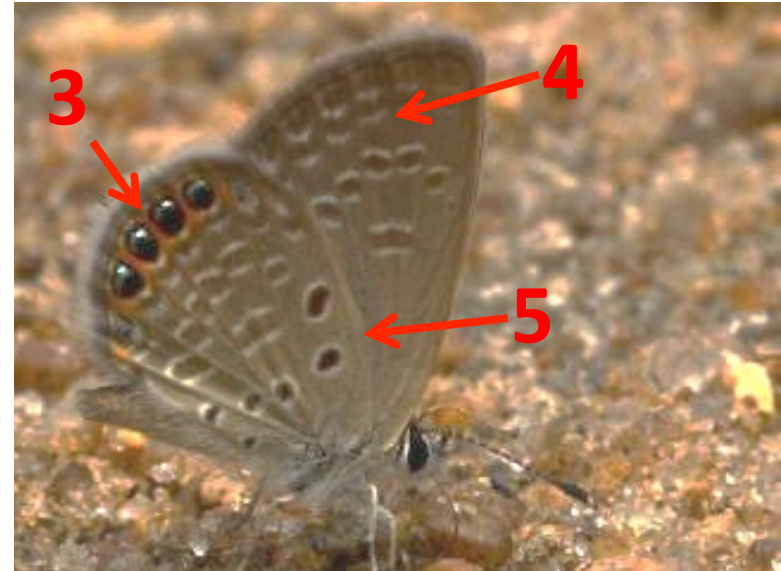
Female

6. Outer margin thick in dark brown

31, Grass Jewel (*Chilades putil*)

*Smallest butterfly in Sri Lanka.

1. It hasn't tail.
2. Upperside is dark brown and sub marginall row of circular black spots on HW.
3. Underside has row of circular black spots along the sub-margin of HW and ringed in orange blue scales.
4. Two bands of cresecent-shaped marking replace the sub-margin on the FW.
5. HW has five black spots ringed in white.

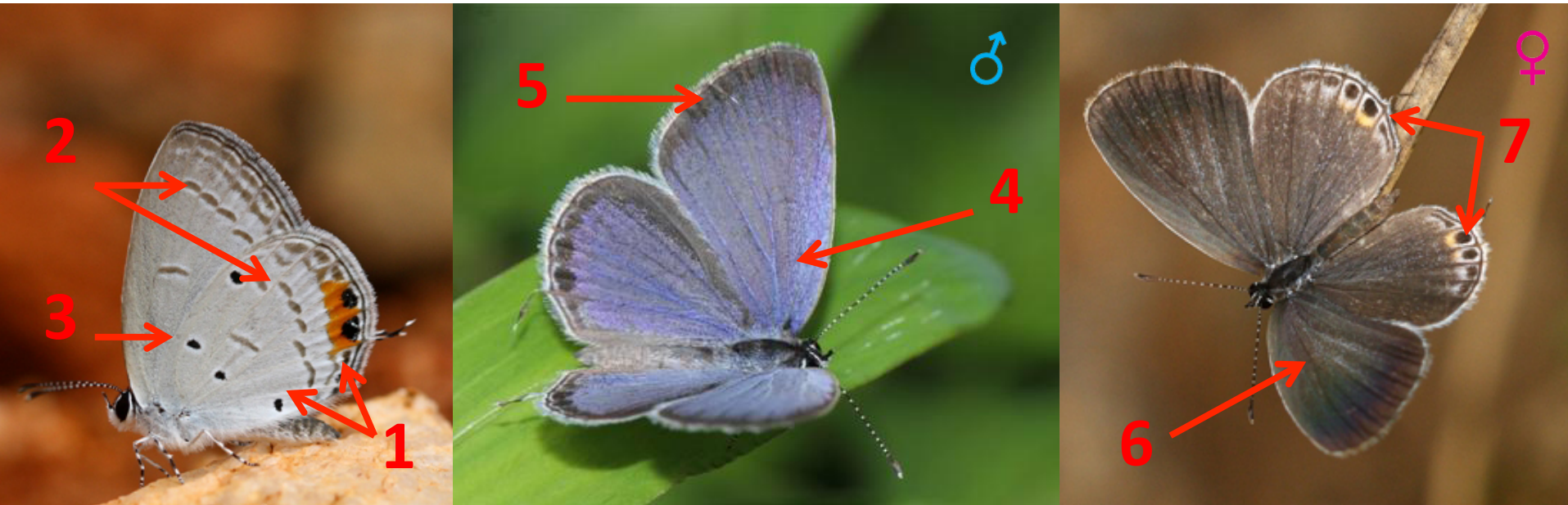


32, Red Pierrot (*Talicauda nyseus*)



1. Upperside is black with a broad red band on the outer margin of HW. Rarely yellow in color.
2. Both wings Cilia are marked with black and white.
3. White patches in the broad red marginal band on the HW and red color only goes up to vein 6.
4. FW has two rows of white patches on black outer margin.

33, Indian Cupid (*Everes lacturnus*)



1. Underside color varies to pure white to buff-white and two black ternal spots are heavily capped in orange.
2. Both wing has narrowed brown distal band.
3. HW has two black spot near the upper margin. One is on the cell and other one near the lower margin.

Male

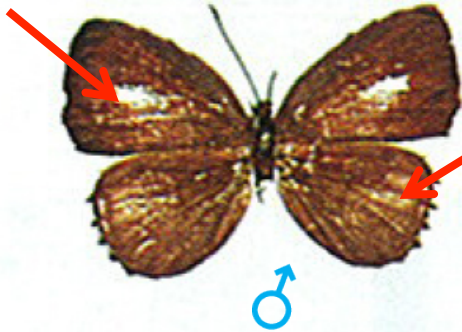
4. Upperside is shiny blue.
5. Black outer margin are thicker than upper margin on the FW.

Female

6. Upperside is dark brown with grayish scales.
7. Upperside has two black ternal spots capped in orange.

34, Quaker (*Neopithecops zalmora*)

2



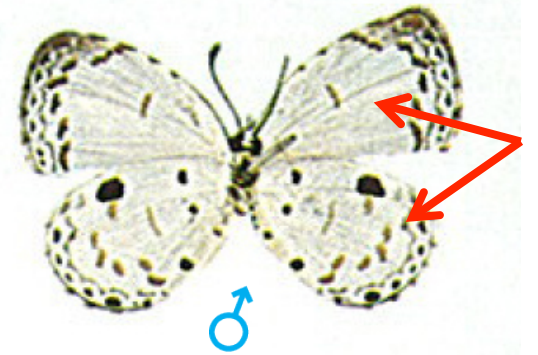
N. zalmora ♂ R

1



N. zalmora ♀ R

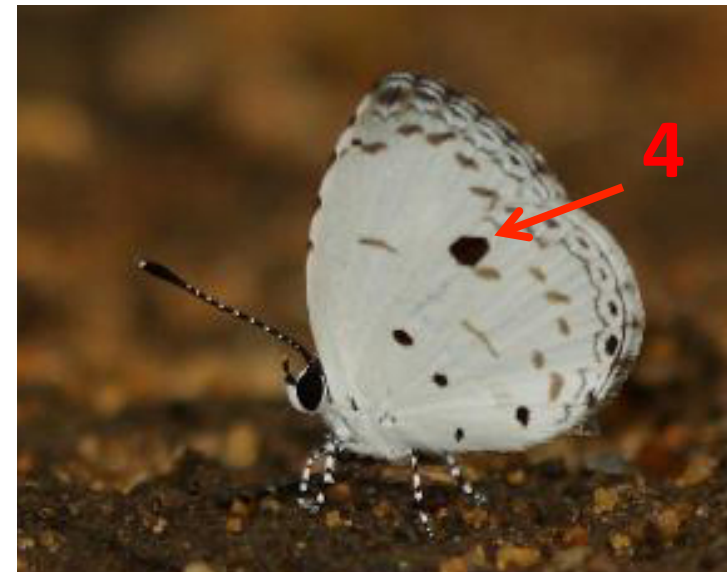
3



N. zalmora ♂ V

1. Upperside blackish-brown.
2. White patch on the FW.
3. Underside is pure white with light sub marginal markings.
4. Large circular black spot on the costa of the HW.

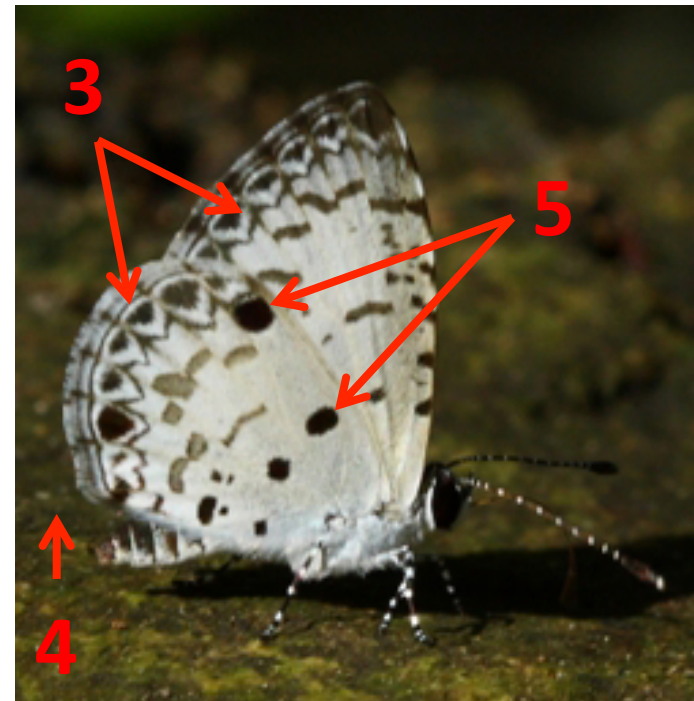
4



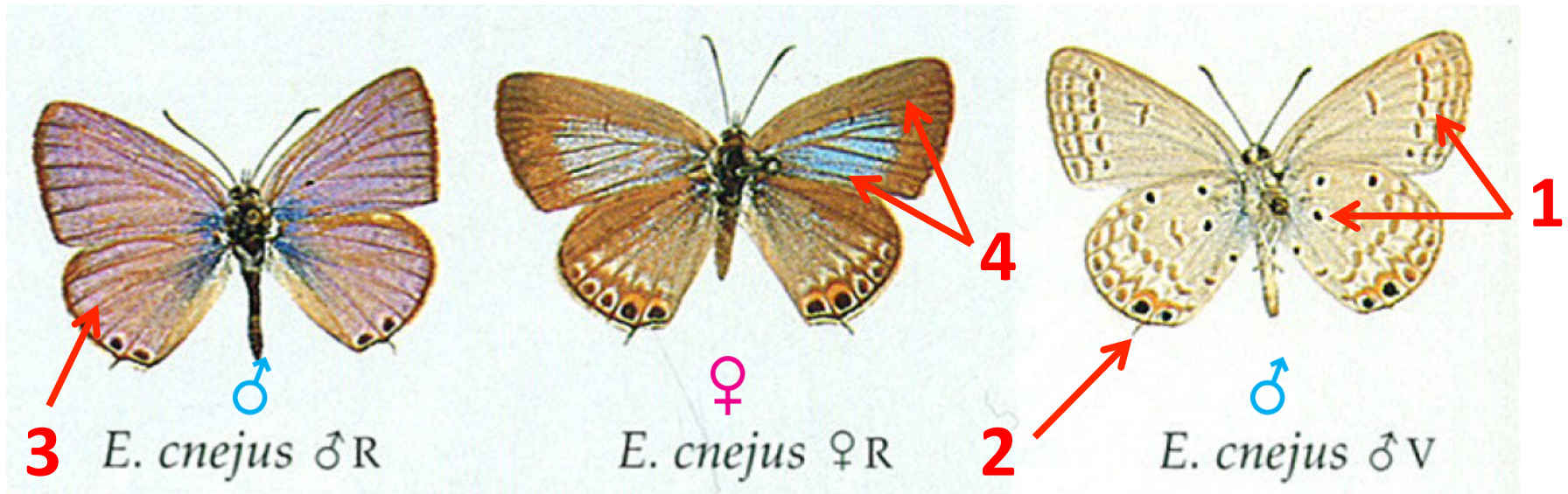
35, Malayan (*Megisba malaya*)



1. Upperside is dark-brown with paler discal area of the FW.
2. Underside Gray with black spots and grayish markings on the both wings.
3. Cresecent shaped marks in sub-marginal bands.
4. Pair of shot tails on HW.
5. It has two similar sized black spots at the upper margin and another one at the cell.



36, Gram Blue (*Euchrysops cnejus*)



1. Underside is pale color and dark gray spots and few black spots.
2. Tails situated in between black sub-marginal spots of HW.

Male

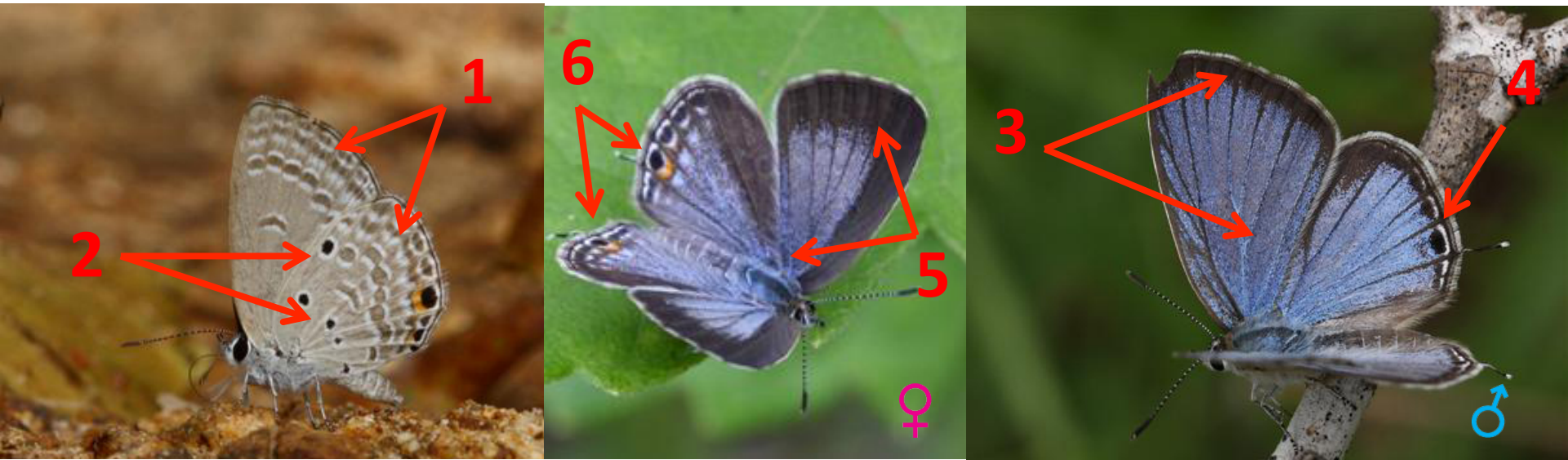
3. Upperside is light purple blue

Female

4. Upperside heavily black-dusted with the wing bases pale shining blue.



37, Plain Cupid (*Chilades pandava*)



1. Underside has two sub-marginal bands which consists of white line on FW and white lunules on the HW.
2. It has Five black spots (2 near upper margin, 1 at cell, 1 at IS 1b, 1 near anal margin) ringed in white and two of them are close to each other.

Male

3. Upperside is shiny blue with dark brown margins.
4. HW has white marginal raw.

Female

5. Broad margins with lighter blue basal parts.
6. Tornal spot capped with orange and has sub-marginal cresecent shapped markings.

38, Small Cupid (*Chilades parrhasius*)



1. Smaller than other Cupids
2. It has four black spots (2 near upper margin, 1 at cell, 1 near anal margin)
3. Black color doesn't extend much along the veins of FW upper side on males.
4. Amount of blue in females vary

39, Lime Blue (*Chilades lajus*)



1. Underside is whitish brown.
 2. It has two sub-marginal rows of crescent-shaped markings on both wings.
 3. Both wings have distal bands of golden brown patches outlined in white on both sides.
 4. It has circular black spots ringed in white near the upper margin.
- * Dry season form has cloud of dark brown scales in the distal area of HW.

Male

5. Upperside is shiny blue up to the margin.

Female

6. Upperside blue area only limited to basal parts.
7. HW has sub-marginal row of white rings.